



Western Michigan University  
ScholarWorks at WMU

---

Legacy Scout Tickets from Pure Oil Company

---

8-20-2021

## MGRRE\_PureOilScoutTickets\_Van Dyke & Berlin State Bank\_3\_21081062270000

MGRRE

*Western Michigan University*

Follow this and additional works at: <https://scholarworks.wmich.edu/pure>



Part of the Geology Commons

---

### WMU ScholarWorks Citation

MGRRE, "MGRRE\_PureOilScoutTickets\_Van Dyke & Berlin State Bank\_3\_21081062270000" (2021). *Legacy Scout Tickets from Pure Oil Company*. 3980.  
<https://scholarworks.wmich.edu/pure/3980>

This Document is brought to you for free and open access via ScholarWorks at WMU. It has been accepted for inclusion in Legacy Scout Tickets from Pure Oil Company by an authorized administrator of ScholarWorks at WMU. See the National Digital Catalogue - Science Base Catalogue for more collections submitted by MGRRE.



---

**MGRRE\_PureOilScoutTickets\_Van Dyke & Berlin State Bank\_3\_21081062270000**

API 21081062270000

Permit Number 6227

Lease Name Van Dyke & Berlin State Bank

Well Number 3

County Kent

Township 06N

Range 12W

Section 5

2021 DEQ or Pure co\_name Smith Petroleum Company

Pure Number 102

Latitude 42.9389678

Longitude -85.7481716

THE PURE OIL COMPANY  
LOCATION REPORT

DATE June 5, 1939

No. 102

STATE Michigan COUNTY Kent DIST. Walker TWP. Walker SEC. 5 TOWN 6 N RANGE 12 W

WELL No. 2 (SERIAL No. 102) FARM Berlin State Bank, et al ACRES

NAME OF STREAM OR WATERS \_\_\_\_\_ QUADRANGLE NW-SE-NE

OPERATOR Smith Petroleum Company, et al Map Walker Township, Kent County

233 233 Feet from North Line of Farm  
102 1020

" " East " " "  
" " South " " "  
" " West " " "

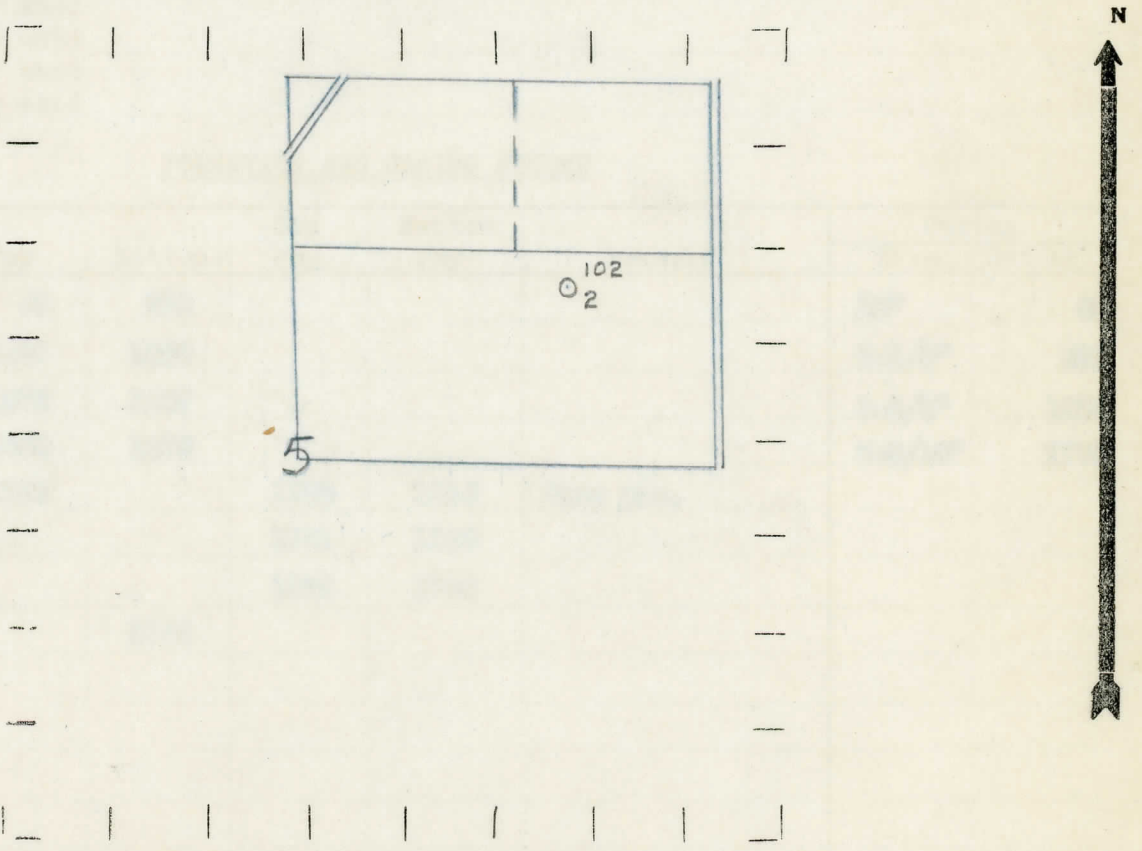
1421 1421 Feet from North Line of Section  
102 1020

" " East " " "  
" " South " " "  
" " West " " "

LEGEND

- LOCATION
- ⊙ RIG
- ⊕ DRILLING
- ☀ GAS WELL
- OIL WELL
- ⦿ SMALL OIL WELL
- ⊖ DRY HOLE
- ◆ DRY SHOWING OIL
- ⊖ DRY SHOWING GAS
- ⊖ ABANDONED LOCATION
- ☀ ABANDONED GAS WELL
- ⦿ ABANDONED OIL WELL

NOTE: Below make tracing from map, (when no map is obtainable make sketch) showing farm, center of section, this location with measurements and also wells, dry holes, or other locations in the vicinity of this location.



REMARKS:

SIGNED

R. L. Yeager

Superintendent or Foreman.

COMPLETION RECORD OF WELLS DRILLED BY OTHER OPERATORS

Michigan Producing Division

Date June 22, 1939 No. 102  
 State Mich. County Kent Dist. Walker Sec. 5 Twp. 6 N Rge. 12 W  
 (Serial No.)  
 Well No. 2 (~~County~~) 102 Farm Berlin State Bank, et al Acres  
 Operator Smith Petroleum Co., et al Information secured ~~from~~ Scouting Department  
 By  
 Date well started 5-26-39 Dated well completed 6-12-39 Elevation 607.1

PRODUCTION RECORD

16  
 1st ~~24~~ hours natural 256 Barrels  
 2nd 24 hours natural  
 Date of shot No. of quarts From to From to  
 Date of acid No. of gallons  
 shot  
 1st 24 hours after acid  
 shot  
 2nd 24 hours after acid

FORMATION AND CASING RECORD

Formation	Top	Bottom	Top Pay	Bottom Pay	Remarks	Casing	
						Size	Set at
Marshall	60	332				10"	65
Red Rock	1047	1069				8-1/4"	391
Berea	1075	1087				6-5/8"	1092
Antrim	1550	1675				5-5/16"	1700
Traverse Lime	1723		1725	1735	Show gas.		
			1751	1760			
			1762	1764			
Total Depth		1765					

Remarks Gauged 3 million cu. ft. of gas from 1077' to 1085'; gauged 1 million cu. ft. gas from 1725' to 1735'.

Signed D. C. Shackelford