



Western Michigan University
ScholarWorks at WMU

Legacy Scout Tickets from Pure Oil Company

8-20-2021

MGRRE_PureOilScoutTickets_Barker _1_na

MGRRE

Western Michigan University

Follow this and additional works at: <https://scholarworks.wmich.edu/pure>



Part of the Geology Commons

WMU ScholarWorks Citation

MGRRE, "MGRRE_PureOilScoutTickets_Barker _1_na" (2021). *Legacy Scout Tickets from Pure Oil Company*. 4052.

<https://scholarworks.wmich.edu/pure/4052>

This Document is brought to you for free and open access via ScholarWorks at WMU. It has been accepted for inclusion in Legacy Scout Tickets from Pure Oil Company by an authorized administrator of ScholarWorks at WMU. See the National Digital Catalogue - Science Base Catalogue for more collections submitted by MGRRE.



MGRRE_PureOilScoutTickets_Barker _1_na

API na

Permit Number na

Lease Name Barker

Well Number 1

County Kent

Township 08N

Range 10W

Section 20

2021 DEQ or Pure co_name Bridger Basin Oil & Gas

Pure Number 174

Latitude 43.0645023

Longitude -85.5202093

THE PURE OIL COMPANY
COMPLETION RECORD OF WELLS DRILLED BY OTHER OPERATORS
LOCATION REPORT

DATE July 27, 1939

No. 174

STATE Michigan COUNTY Kent DIST. Cannon SEC. 20 TOWN 8-N RANGE 10-W
WELL No. 1 (SERIAL No. 174) FARM Barker ACRES

NAME OF STREAM OR WATERS _____ QUADRANGLE NE-NE-NE

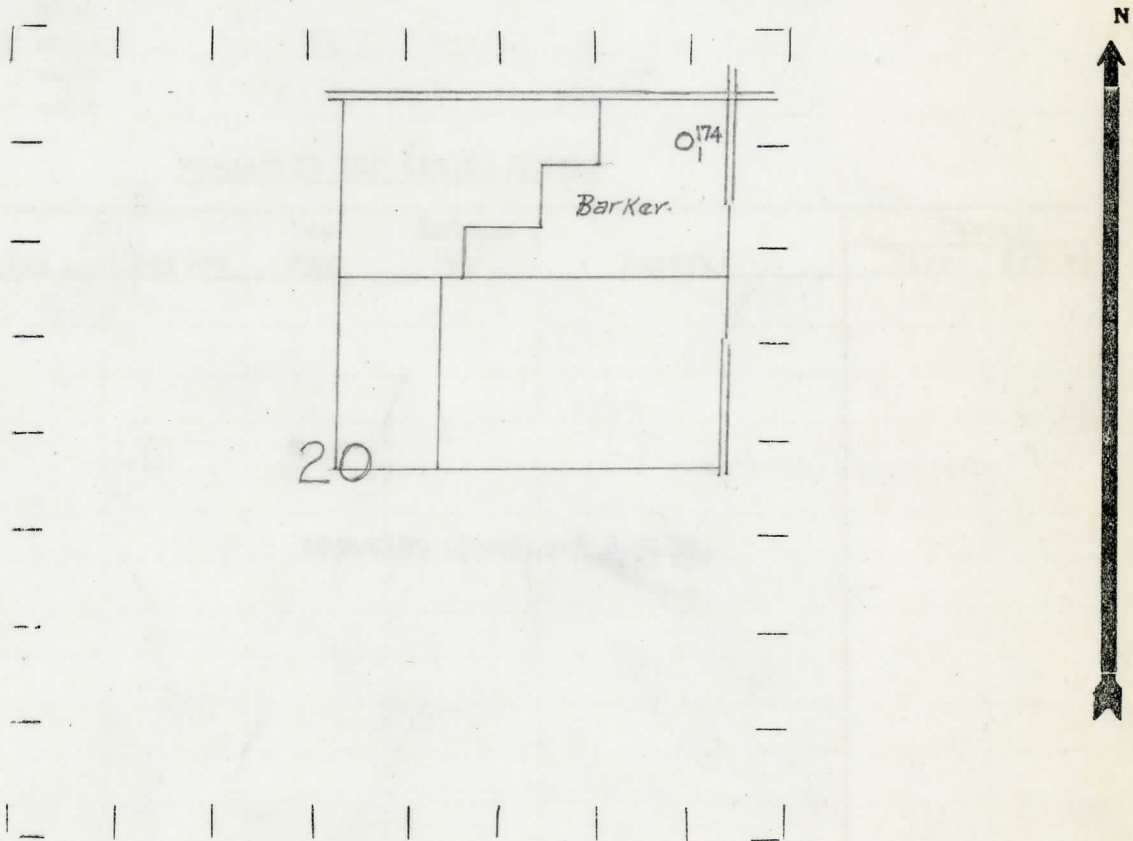
OPERATOR Bridger Basin Oil Corporation Map Cannon Township, Kent County

330 330 Feet from North Line of Farm
330 330 " " East " " "
" " South " " "
" " West " " "

330 330 Feet from North Line of Section
330 330 " " East " " "
" " South " " "
" " West " " "

- LEGEND**
- LOCATION
 - ⊕ RIG
 - ⊕ DRILLING
 - ☼ GAS WELL
 - OIL WELL
 - ⊕ SMALL OIL WELL
 - ⊖ DRY HOLE
 - ⊕ DRY SHOWING OIL
 - ⊖ DRY SHOWING GAS
 - ⊖ ABANDONED LOCATION
 - ☼ ABANDONED GAS WELL
 - ⊖ ABANDONED OIL WELL

NOTE: Below make tracing from map, (when no map is obtainable make sketch) showing farm, center of section, this location with measurements and also wells, dry holes, or other locations in the vicinity of this location.



REMARKS: _____

SIGNED [Signature]
Superintendent or Foreman.

Michigan Producing Division

Date August 10, 1939 No. 174
 State Mich. County Kent ~~DIST.~~ Twp. Cannon Sec. 20 Twp. 8 N Rge. 10 W
 Well No. 1 (Serial No.) 174 (County No.) Farm Barker Acres
 Operator Bridger Basin Oil Corporation Information secured ~~From~~ Scouting Department By
 Date well started Not started. Dated well completed Not completed. Elevation

PRODUCTION RECORD

1st 24 hours natural Location abandoned.
 2nd 24 hours natural
 Date of shot _____ No. of quarts _____ From _____ to _____ From _____ to _____
 Date of acid _____ No. of gallons _____
 shot
 1st 24 hours after acid _____
 shot
 2nd 24 hours after acid _____

FORMATION AND CASING RECORD

Formation	Top	Bottom	Top Pay	Bottom Pay	Remarks	Casing	
						Size	Set at
<u>Location abandoned 8-8-39.</u>							

Remarks _____

Signed D. C. Shackelford