



Western Michigan University
ScholarWorks at WMU

Legacy Scout Tickets from Pure Oil Company

8-20-2021

MGRRE_PureOilScoutTickets_Burrow, Adam_1_na

MGRRE

Western Michigan University

Follow this and additional works at: <https://scholarworks.wmich.edu/pure>



Part of the Geology Commons

WMU ScholarWorks Citation

MGRRE, "MGRRE_PureOilScoutTickets_Burrow, Adam_1_na" (2021). *Legacy Scout Tickets from Pure Oil Company*. 4063.

<https://scholarworks.wmich.edu/pure/4063>

This Document is brought to you for free and open access via ScholarWorks at WMU. It has been accepted for inclusion in Legacy Scout Tickets from Pure Oil Company by an authorized administrator of ScholarWorks at WMU. See the National Digital Catalogue - Science Base Catalogue for more collections submitted by MGRRE.



MGRRE_PureOilScoutTickets_Burrow, Adam_1_na

API na

Permit Number na

Lease Name Burrow, Adam

Well Number 1

County Kent

Township 07N

Range 12W

Section 31

2021 DEQ or Pure co_name Cryden Petroleum Corporation and Fortney Oil Company

Pure Number 185

Latitude 42.9505509

Longitude -85.7751402

THE PURE OIL COMPANY

COMPLETION RECORD OF WELLS DRILLED BY OTHER OPERATORS

DATE July 27, 1939

LOCATION REPORT

No. 185

STATE Michigan COUNTY Kent DIST. Walker TWP. Walker SEC. 31 TOWN 7-N RANGE 12-W

WELL No. 1 (SERIAL No. 185) FARM Adam Burrow ACRES

NAME OF STREAM OR WATERS QUADRANGLE C-1-SE-NW

OPERATOR Cryden Petroleum Corporation et al Map Walker Township, Kent County

115 115 Feet from North Line of Farm

660 660 East

115 115 South

660 660 West

Feet from North Line of Section

660 660 East

776 776 South

West

LEGEND

○ LOCATION

⊙ RIG

⊕ DRILLING

☀ GAS WELL

● OIL WELL

⦿ SMALL OIL WELL

⊖ DRY HOLE

⦿ DRY SHOWING OIL

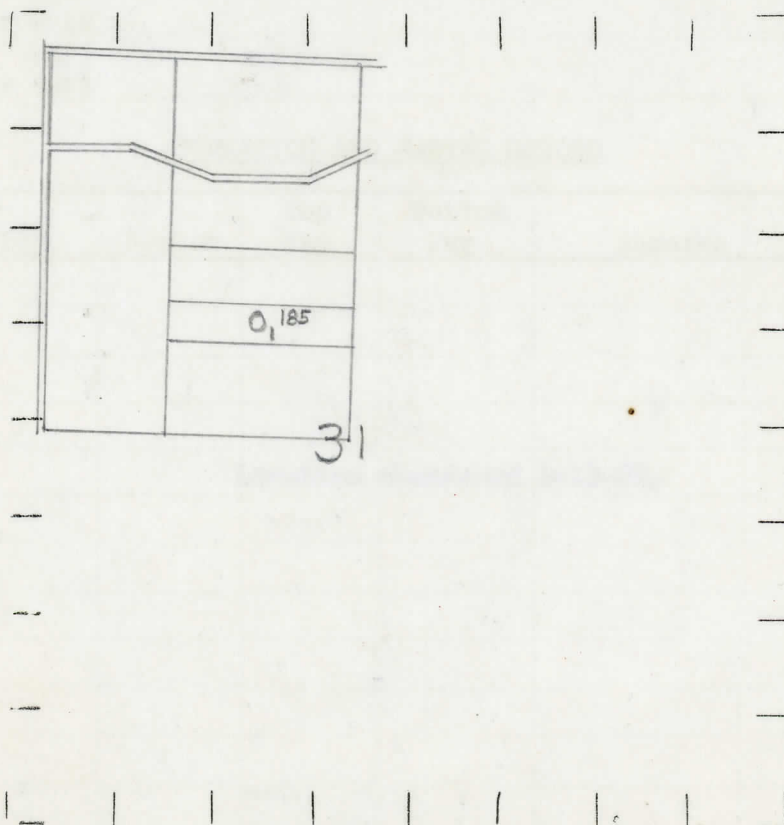
⊖ DRY SHOWING GAS

⊖ ABANDONED LOCATION

☀ ABANDONED GAS WELL

⦿ ABANDONED OIL WELL

NOTE: Below make tracing from map, (when no map is obtainable make sketch) showing farm, center of section, this location with measurements and also wells, dry holes, or other locations in the vicinity of this location.



REMARKS:

SIGNED

R. G.

Superintendent or Foreman.

COMPLETION RECORD OF WELLS DRILLED BY OTHER OPERATORS

Michigan Producing Division

Date August 17, 1939 No. 185
 State Mich. County Kent Dist. Walker Twp. 7 N Sec. 31 Rge. 12 W
 Well No. 1 (Serial No.) 185 Farm Adam Burrow Acres _____
 Operator Cryden Petroleum Corp., et al Information secured From Scouting Department
 Date well started Not started Dated well completed Not completed. Elevation _____

PRODUCTION RECORD

1st 24 hours natural Location abandoned.
 2nd 24 hours natural _____
 Date of shot _____ No. of quarts _____ From _____ to _____ From _____ to _____
 Date of acid _____ No. of gallons _____
 shot _____
 1st 24 hours after acid _____
 shot _____
 2nd 24 hours after acid _____

FORMATION AND CASING RECORD

Formation	Top	Bottom	Top Pay	Bottom Pay	Remarks	Casing	
						Size	Set at
<u>Location abandoned 8-15-39.</u>							

Remarks _____

Signed D. C. Shackelford