



Western Michigan University  
ScholarWorks at WMU

---

Legacy Scout Tickets from Pure Oil Company

---

8-20-2021

**MGRRE\_PureOilScoutTickets\_Cole\_1\_21081065290000**

MGRRE

*Western Michigan University*

Follow this and additional works at: <https://scholarworks.wmich.edu/pure>



Part of the Geology Commons

---

#### **WMU ScholarWorks Citation**

MGRRE, "MGRRE\_PureOilScoutTickets\_Cole\_1\_21081065290000" (2021). *Legacy Scout Tickets from Pure Oil Company*. 4068.

<https://scholarworks.wmich.edu/pure/4068>

This Document is brought to you for free and open access via ScholarWorks at WMU. It has been accepted for inclusion in Legacy Scout Tickets from Pure Oil Company by an authorized administrator of ScholarWorks at WMU. See the National Digital Catalogue - Science Base Catalogue for more collections submitted by MGRRE.



---

**MGRRE\_PureOilScoutTickets\_Cole\_1\_21081065290000**

API 21081065290000

Permit Number 6529

Lease Name Cole

Well Number 1

County Kent

Township 06N

Range 12W

Section 31

2021 DEQ or Pure co\_name Crown Development Company

Pure Number 190

Latitude 42.86951

Longitude -85.76609

THE PURE OIL COMPANY

DATE August 3, 1939

LOCATION REPORT

No. 190

STATE Michigan COUNTY Kent DIST. Wyoming TWP. 31 SEC. 31 TOWN 6 N RANGE 12 W

WELL No. 1 (SERIAL No. 190) FARM Cornelius Cole ACRES

NAME OF STREAM OR WATERS QUADRANGLE NW NE NE

OPERATOR Crown Development Company Map Wyoming Township, Kent County

330330 Feet from North Line of Farm

East " " "

South " " "

330330 West " " "

330 330 Feet from North Line of Section

990 990 East " " "

South " " "

West " " "

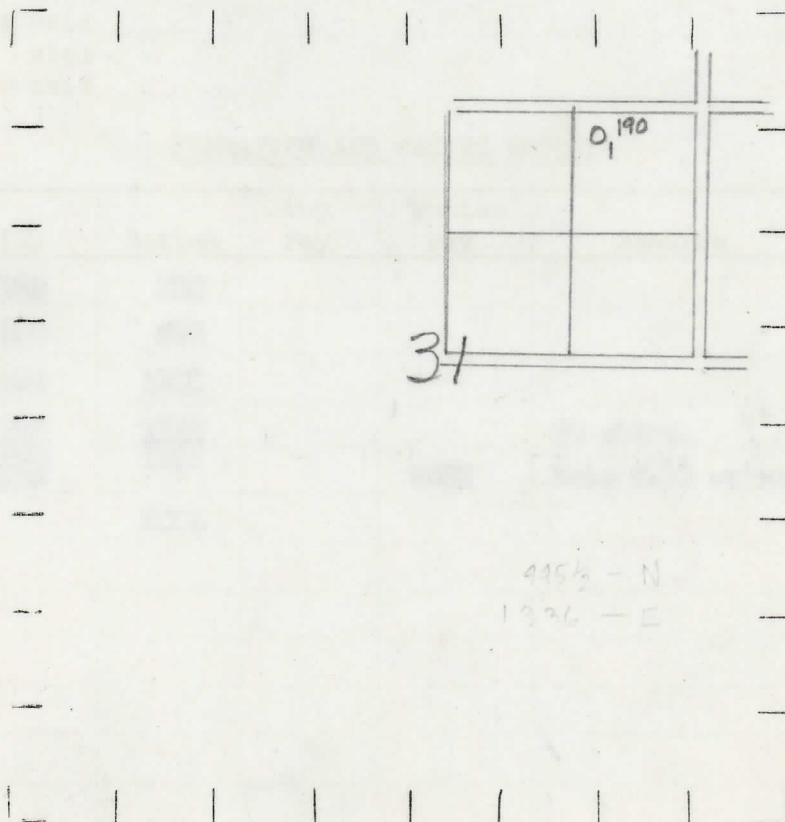
*Spay*

- LOCATION
- ⊕ RIG
- ⊕ DRILLING
- ☀ GAS WELL
- OIL WELL
- ⊕ SMALL OIL WELL

LEGEND

- ⊙ DRY HOLE
- ⊕ DRY SHOWING OIL
- ☀ DRY SHOWING GAS
- ⊙ ABANDONED LOCATION
- ☀ ABANDONED GAS WELL
- ⊙ ABANDONED OIL WELL

NOTE: Below make tracing from map, (when no map is obtainable make sketch) showing farm, center of section, this location with measurements and also wells, dry holes, or other locations in the vicinity of this location.



REMARKS:

SIGNED

Superintendent or Foreman.

*S 1/2*

Michigan Producing Division

Date August 17, 1939 No. 190  
 State Mich. County Kent ~~Dist.~~ Wyoming Twp. 6 N Sec. 31 Rge. 12 W  
 Well No. 1 (Serial No.) 190 Farm Cornelius Cole Acres \_\_\_\_\_  
 Operator Crown Development Company Information secured ~~from~~ <sup>By</sup> Scouting Department  
 Date well started 8-3-39 Dated well completed 8-14-39 Elevation 680.6

PRODUCTION RECORD

1st 24 hours natural Dry Hole  
 2nd 24 hours natural \_\_\_\_\_  
 Date of shot \_\_\_\_\_ No. of quarts \_\_\_\_\_ From \_\_\_\_\_ to \_\_\_\_\_ From \_\_\_\_\_ to \_\_\_\_\_  
 Date of acid \_\_\_\_\_ No. of gallons \_\_\_\_\_  
 shot \_\_\_\_\_  
 1st 24 hours after acid \_\_\_\_\_  
 shot \_\_\_\_\_  
 2nd 24 hours after acid \_\_\_\_\_

FORMATION AND CASING RECORD

Formation	Top	Bottom	Top Pay	Bottom Pay	Remarks	Casing	
						Size	Set at
Marshall	123	335				10"	72
Coldwater Lime	670	690				8-1/4"	398
Red Rock	1089	1102					
Berea	1118	1145			No shows.		
Antrim	1630	1918					
Traverse Lime	1974			2003	Hole full water.		
Total Depth		2004					

Remarks \_\_\_\_\_  
 \_\_\_\_\_  
 \_\_\_\_\_

Signed D. C. Shackelford