



Western Michigan University  
ScholarWorks at WMU

---

Legacy Scout Tickets from Pure Oil Company

---

8-20-2021

## MGRRE\_PureOilScoutTickets\_Gilbert, Wm H Estate\_8\_21081065310000

MGRRE

*Western Michigan University*

Follow this and additional works at: <https://scholarworks.wmich.edu/pure>



Part of the Geology Commons

---

### WMU ScholarWorks Citation

MGRRE, "MGRRE\_PureOilScoutTickets\_Gilbert, Wm H Estate\_8\_21081065310000" (2021). *Legacy Scout Tickets from Pure Oil Company*. 4070.

<https://scholarworks.wmich.edu/pure/4070>

This Document is brought to you for free and open access via ScholarWorks at WMU. It has been accepted for inclusion in Legacy Scout Tickets from Pure Oil Company by an authorized administrator of ScholarWorks at WMU. See the National Digital Catalogue - Science Base Catalogue for more collections submitted by MGRRE.



---

**MGRRE\_PureOilScoutTickets\_Gilbert, Wm H Estate\_8\_21081065310000**

API 21081065310000

Permit Number 6531

Lease Name Gilbert, Wm H Estate

Well Number 8

County Kent

Township 06N

Range 12W

Section 4

2021 DEQ or Pure co\_name Smith Petroleum Company

Pure Number 192

Latitude 42.93985

Longitude -85.73419

THE PURE OIL COMPANY  
LOCATION REPORT

DATE August 3, 1939

No. 192

STATE Michigan COUNTY Kent DIST. Walker TWP. Walker SEC. 4 TOWN 6 N RANGE 12 W

WELL No. 8 (SERIAL No. 192) FARM Wm. H. Gilbert Estate ACRES

NAME OF STREAM OR WATERS QUADRANGLE SW NW NE

OPERATOR Smith Petroleum Company, et al Map Walker Township, Kent County

990 990 Smith Pet. Co et al Feet from North Line of Farm  
400 400 " " East " " "

" " South " " "  
" " West " " "

990 990 Feet from North Line of Section  
" " East " " "

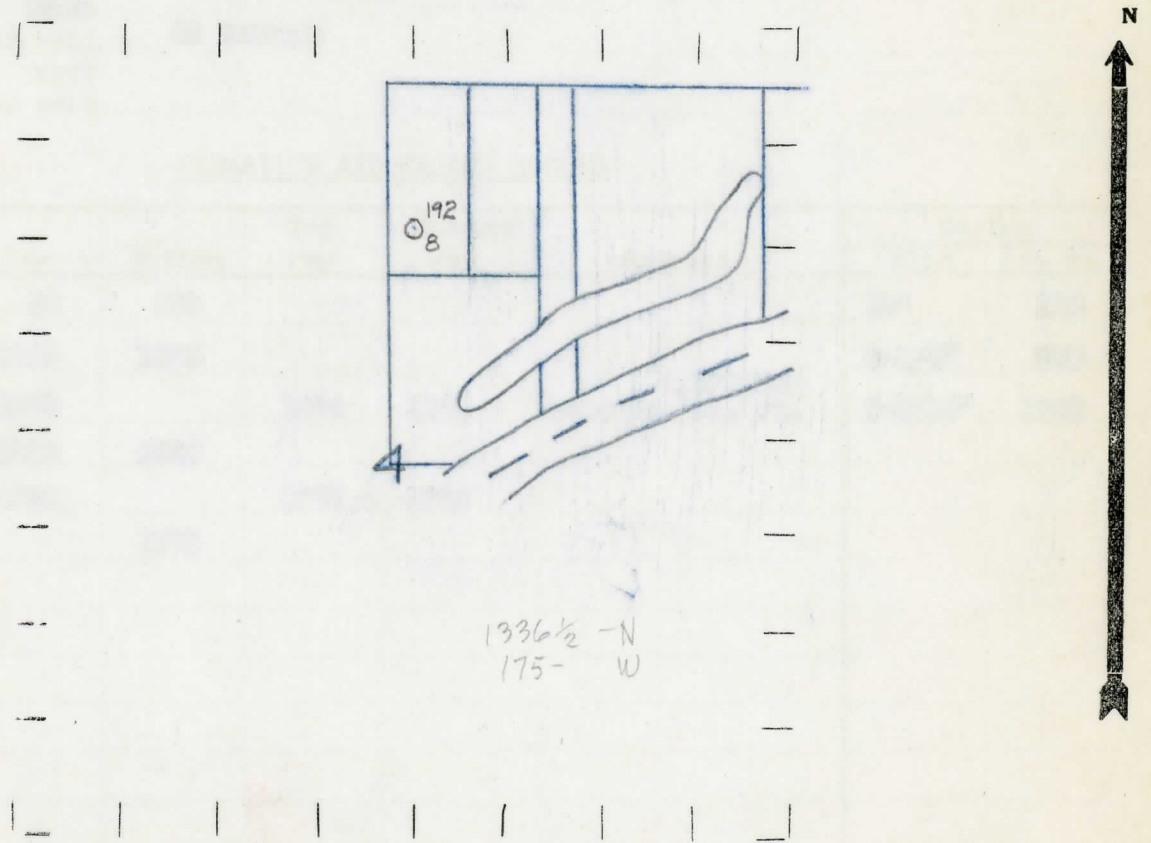
" " South " " "  
130 130 " " West " 1/4 "

Low

LEGEND

- LOCATION
- ⊙ RIG
- ⊕ DRILLING
- ☀ GAS WELL
- OIL WELL
- ⦿ SMALL OIL WELL
- ⊖ DRY HOLE
- ⦿ DRY SHOWING OIL
- ⊖ DRY SHOWING GAS
- ⊖ ABANDONED LOCATION
- ☀ ABANDONED GAS WELL
- ⦿ ABANDONED OIL WELL

NOTE: Below make tracing from map, (when no map is obtainable make sketch) showing farm, center of section, this location with measurements and also wells, dry holes, or other locations in the vicinity of this location.



REMARKS:

SIGNED

Superintendent or Foreman.

COMPLETION RECORD OF WELLS DRILLED BY OTHER OPERATORS

Michigan Producing Division

Date September 14, 1939 No. 192  
 State Mich. County Kent Dist. Walker Sec. 4 Twp. 6 N Rge. 12 W  
 (Serial No.)  
 Well No. 8 (County No.) 192 Farm Wm. H. Gilbert Est. Acres  
 Operator Smith Petroleum Co., et al Information secured from Scouting Department  
 Date well started 8-13-39 Dated well completed 8-29-39 Elevation 603.8

PRODUCTION RECORD

1st 24 hours natural Filled up 1000 ft.  
 2nd 24 hours natural  
 Date of shot No. of quarts From to From to  
 Date of acid 8-30-39 No. of gallons 1000  
shot  
 1st 24 hours after acid 50 Barrels  
shot  
 2nd 24 hours after acid

FORMATION AND CASING RECORD

Formation	Top	Bottom	Top Pay	Bottom Pay	Remarks	Casing	
						Size	Set at
Marshall	60	320				10"	215
Red Rock	1054	1065				8-1/4"	368
Berea	1069		1074	1084	Gauged: <u>1,200,000</u> <u>cu. ft.</u>	5-3/16"	1708
Antrim	1519	1687					
Traverse Line	1734		1752	1769			
Total Depth		1778					

Remarks

Signed D. C. Shackelford