



Western Michigan University
ScholarWorks at WMU

Legacy Scout Tickets from Pure Oil Company

8-20-2021

MGRRE_PureOilScoutTickets_Grand Rapids Gravel Co_3_21081065500000

MGRRE

Western Michigan University

Follow this and additional works at: <https://scholarworks.wmich.edu/pure>



Part of the Geology Commons

WMU ScholarWorks Citation

MGRRE, "MGRRE_PureOilScoutTickets_Grand Rapids Gravel Co_3_21081065500000" (2021). *Legacy Scout Tickets from Pure Oil Company*. 4076.
<https://scholarworks.wmich.edu/pure/4076>

This Document is brought to you for free and open access via ScholarWorks at WMU. It has been accepted for inclusion in Legacy Scout Tickets from Pure Oil Company by an authorized administrator of ScholarWorks at WMU. See the National Digital Catalogue - Science Base Catalogue for more collections submitted by MGRRE.



MGRRE_PureOilScoutTickets_Grand Rapids Gravel Co_3_21081065500000

API 21081065500000

Permit Number 6550

Lease Name Grand Rapids Gravel Co

Well Number 3

County Kent

Township 06N

Range 12W

Section 4

2021 DEQ or Pure co_name Goodale Enterprises LLC

Pure Number 198

Latitude 42.9330595

Longitude -85.7332518

THE PURE OIL COMPANY

LOCATION REPORT

DATE August 3, 1939

No. 198

STATE Michigan COUNTY Kent TWP. Wyoming SEC. 4 TOWN 6 N RANGE 12 W

WELL No. 3 (SERIAL No. 198) FARM Grand Rapids Gravel Company ACRES

NAME OF STREAM OR WATERS QUADRANGLE SW NW SE

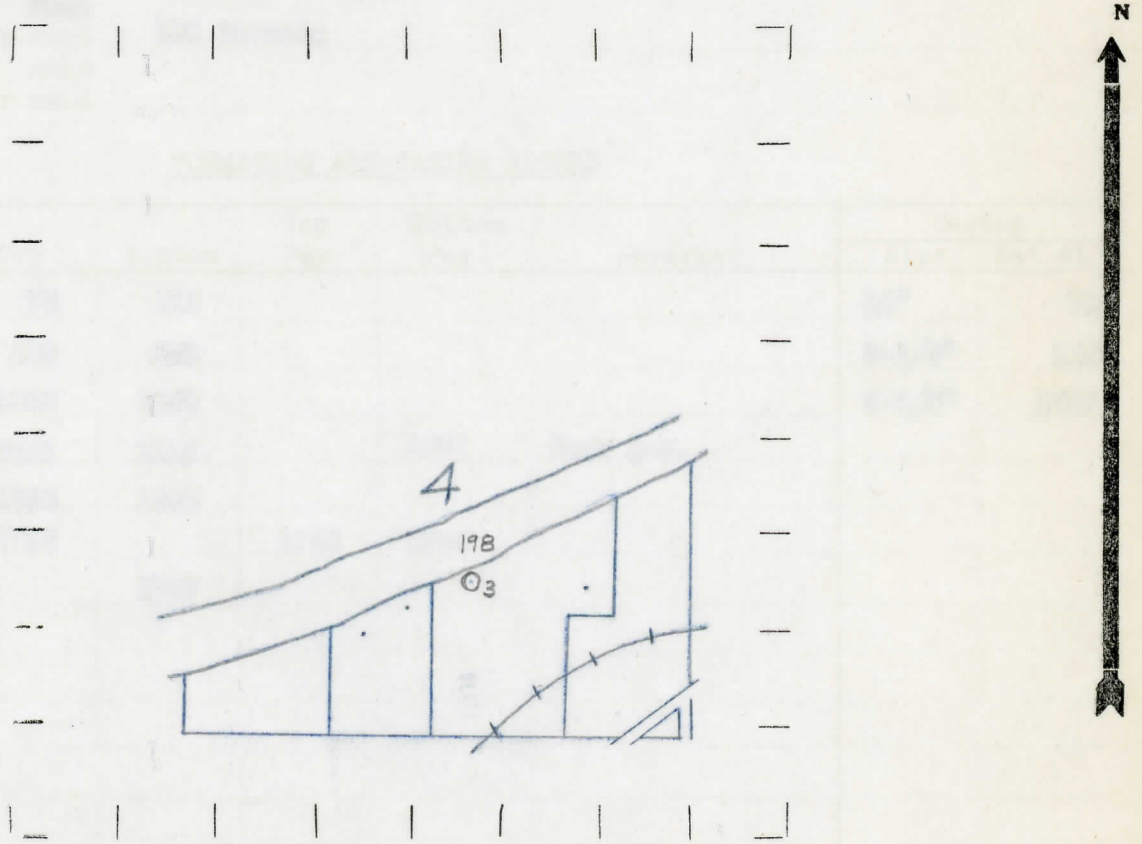
OPERATOR Lamar Oil Company Map Wyoming Township, Kent County

330 330 Feet from North Line of Farm
1600 1600 " " East " " "
" " South " " "
" " West " " "
1100 1100 Feet from North Line of Section
" " East " " "
" " South " " "
350 350 " " West " 1/4 "

Low

- LEGEND
O LOCATION
DRY HOLE
RIG
DRY SHOWING OIL
DRILLING
DRY SHOWING GAS
GAS WELL
ABANDONED LOCATION
OIL WELL
ABANDONED GAS WELL
SMALL OIL WELL
ABANDONED OIL WELL

NOTE: Below make tracing from map, (when no map is obtainable make sketch) showing farm, center of section, this location with measurements and also wells, dry holes, or other locations in the vicinity of this location.



REMARKS:

SIGNED

Superintendent or Foreman.

Michigan Producing Division

Date **September 21, 1939** No. **198**
 State **Mich.** County **Kent** Dist. **Wyoming** Sec. **4** Twp. **6 N** Rge. **12 W**
 Well No. **3** (Serial No.) **198** Farm **G. R. Gravel Company** Acres
 Operator **Lamar Oil Company** Information secured ~~from~~ **Scouting Department**
 Date well started **8-28-39** Dated well completed **9-12-39** Elevation **597.5**

PRODUCTION RECORD

1st 24 hours natural **Hole filled up with oil.**
 2nd 24 hours natural
 Date of shot No. of quarts From to From to
 Date of acid **9-15-39** No. of gallons **1000**
 1st 24 hours after acid ~~shot~~ **100 Barrels**
 shot
 2nd 24 hours after acid

FORMATION AND CASING RECORD

Formation	Top	Bottom	Top Pay	Bottom Pay	Remarks	Casing	
						Size	Set at
Marshall	70	335				10"	70
Coldwater Lime	629	638				8-1/4"	365
Red Rock	1050	1066				6-5/8"	1735
Berea	1081	1112		1087	Show gas.		
Antrim	1525	1685					
Traverse Lime	1735		1752	1756			
Total Depth		1767					

Remarks **Flowing water at 70'.**

Signed **D. C. Shackelford**