



Western Michigan University
ScholarWorks at WMU

Legacy Scout Tickets from Pure Oil Company

8-20-2021

MGRRE_PureOilScoutTickets_Barker_1_21081065910000

MGRRE

Western Michigan University

Follow this and additional works at: <https://scholarworks.wmich.edu/pure>



Part of the Geology Commons

WMU ScholarWorks Citation

MGRRE, "MGRRE_PureOilScoutTickets_Barker_1_21081065910000" (2021). *Legacy Scout Tickets from Pure Oil Company*. 4091.

<https://scholarworks.wmich.edu/pure/4091>

This Document is brought to you for free and open access via ScholarWorks at WMU. It has been accepted for inclusion in Legacy Scout Tickets from Pure Oil Company by an authorized administrator of ScholarWorks at WMU. See the National Digital Catalogue - Science Base Catalogue for more collections submitted by MGRRE.



MGRRE_PureOilScoutTickets_Barker_1_21081065910000

API 21081065910000

Permit Number 6591

Lease Name Barker

Well Number 1

County Kent

Township 08N

Range 10W

Section 20

2021 DEQ or Pure co_name Huffman Drilling Company

Pure Number 213

Latitude 43.07086

Longitude -85.51151

THE PURE OIL COMPANY

DATE August 10, 1939

LOCATION REPORT

No. 213

STATE Michigan COUNTY Kent DIST. Cannon TWP. Cannon SEC. 20 TOWN 8 N RANGE 10 W

WELL No. 1 (SERIAL No. 213) FARM Barker ACRES

NAME OF STREAM OR WATERS QUADRANGLE NE-NE-NE

OPERATOR Huffman Drilling Company Map Cannon Township, Kent County

330330 Feet from North Line of Farm Huffman Dring. Co.

330330 East South West

330330 Feet from North Line of Section

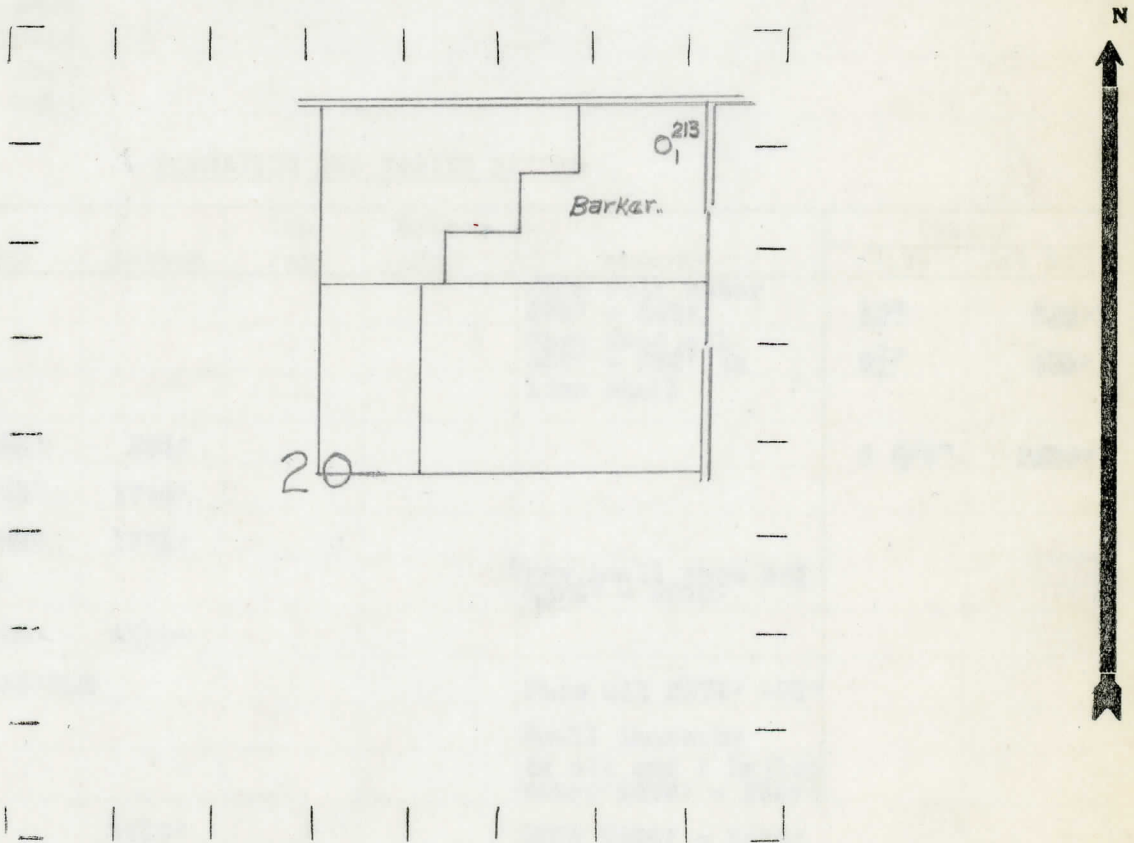
330330 East South West

Cannon-Kent

LEGEND

- O LOCATION
DRY HOLE
RIG
DRY SHOWING OIL
DRILLING
DRY SHOWING GAS
GAS WELL
ABANDONED LOCATION
OIL WELL
ABANDONED GAS WELL
SMALL OIL WELL
ABANDONED OIL WELL

NOTE: Below make tracing from map, (when no map is obtainable make sketch) showing farm, center of section, this location with measurements and also wells, dry holes, or other locations in the vicinity of this location.



REMARKS: Disputed Lease

SIGNED

Superintendent or Foreman

COMPLETION RECORD OF WELLS DRILLED BY OTHER OPERATORS

Michigan Producing Division

Date 10-19-39 No. 213
 State Mich County Kent Dist. Twp. Cannon Sec. 20 Twp. 8 N Rge. 10W
 Well No. 1 (Serial No.) (County No.) 213 Farm Barker Acres _____
 Operator Huffman Drig. Co. Information secured from Scouting Department
 Date well started 8-12-39 Dated well completed 10-12-39 Elevation 849.2

PRODUCTION RECORD

1st 24 hours natural Dry hole.
 2nd 24 hours natural _____
 Date of shot _____ No. of quarts _____ From _____ to _____ From _____ to _____
 Date of acid _____ No. of gallons _____
 1st 24 hours after acid shot _____
 2nd 24 hours after acid shot _____

FORMATION AND CASING RECORD

Formation	Top	Bottom	Top Pay	Bottom Pay	Remarks	Casing	
						Size	Set at
					Hole full water 338' - 348'	10"	362'
					Show dead oil 580' - 586' in lime shell	8 1/2"	380'
Marshall	655'	802'				6 5/8"	2327'
Red Rock	1741'	1744'					
Sunbury	1759'	1771'					
Berea	?				Very small show oil 2275' - 2280'		
Antrim	2100'	2320'					
Traverse Lime	2366' SLM				Show oil 2373' -75' Small increase in oil and 1 bailer water 2382' - 2387'		
Total Depth		2410'			HPSW 2399' - 2410'		

Remarks _____

Signed D. C. Shackelford