



Western Michigan University
ScholarWorks at WMU

Legacy Scout Tickets from Pure Oil Company

8-20-2021

MGRRE_PureOilScoutTickets_Devos, H._1_21081062820000

MGRRE

Western Michigan University

Follow this and additional works at: <https://scholarworks.wmich.edu/pure>



Part of the Geology Commons

WMU ScholarWorks Citation

MGRRE, "MGRRE_PureOilScoutTickets_Devos, H._1_21081062820000" (2021). *Legacy Scout Tickets from Pure Oil Company*. 4095.

<https://scholarworks.wmich.edu/pure/4095>

This Document is brought to you for free and open access via ScholarWorks at WMU. It has been accepted for inclusion in Legacy Scout Tickets from Pure Oil Company by an authorized administrator of ScholarWorks at WMU. See the National Digital Catalogue - Science Base Catalogue for more collections submitted by MGRRE.



MGRRE_PureOilScoutTickets_Devos, H._1_21081062820000

API 21081062820000

Permit Number 6282

Lease Name Devos, H.

Well Number 1

County Kent

Township 07N

Range 12W

Section 19

2021 DEQ or Pure co_name Goff C C

Pure Number 217

Latitude 42.98056

Longitude -85.78366

THE PURE OIL COMPANY

DATE August 10, 1939

LOCATION REPORT

No. 217

STATE Michigan COUNTY Kent DIST Walker TWP. Walker SEC. 19 TOWN 7 N RANGE 12 W

WELL No. 1 (SERIAL No. 217) FARM H. DeVos ACRES

NAME OF STREAM OR WATERS QUADRANGLE SW SW NW

OPERATOR C. C. Goff, et al Map Walker Township, Kent County

Feet from North Line of Farm

37370 " " East " " "

330330 " " South " " "

37 " " West " " "

Feet from North Line of Section

" " East " " "

330330 " " South " 1/4 "

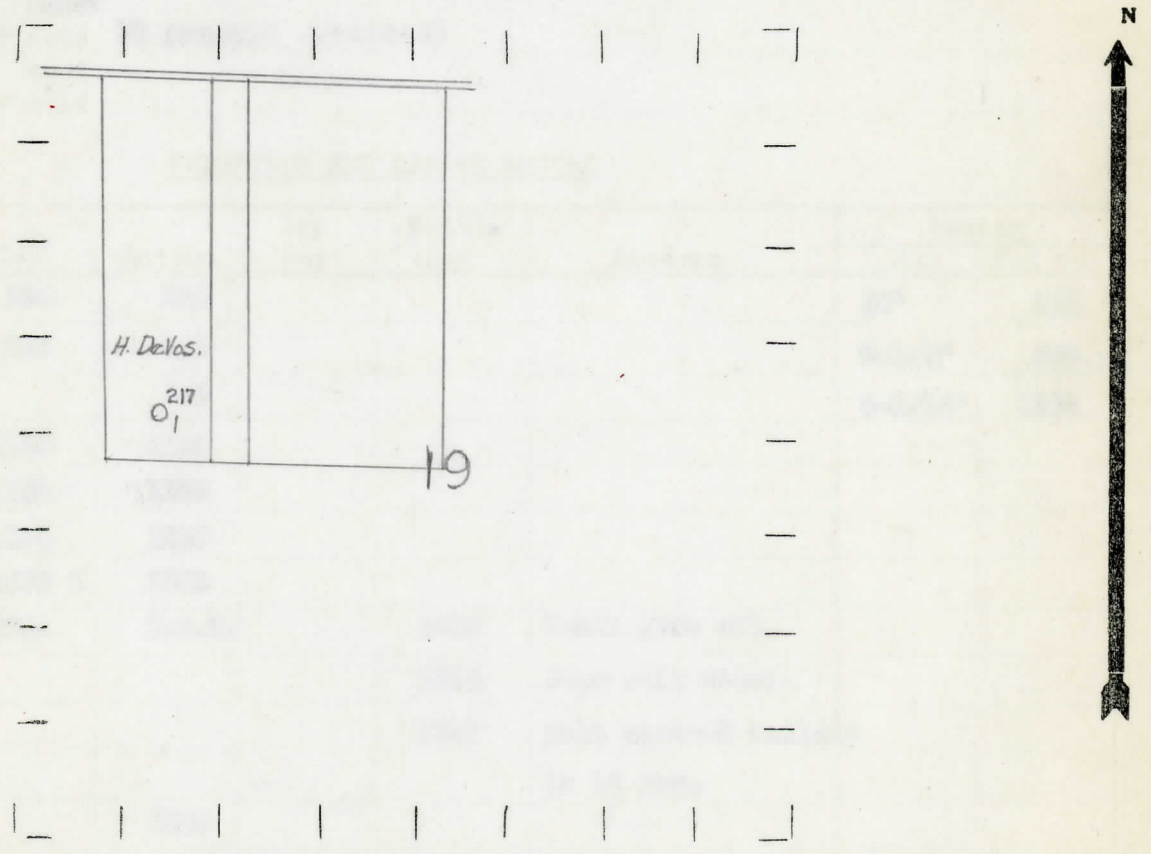
371371 " " West " " "

142
Sp 8.5-39
10" 142

LEGEND

- LOCATION
- ⊕ RIG
- ⊕ DRILLING
- ☀ GAS WELL
- OIL WELL
- ⬮ SMALL OIL WELL
- ⊖ DRY HOLE
- ⬮ DRY SHOWING OIL
- ⊖ DRY SHOWING GAS
- ⊖ ABANDONED LOCATION
- ☀ ABANDONED GAS WELL
- ⬮ ABANDONED OIL WELL

NOTE: Below make tracing from map, (when no map is obtainable make sketch) showing farm, center of section, this location with measurements and also wells, dry holes, or other locations in the vicinity of this location.



REMARKS:

SIGNED

Superintendent or Foreman.

Michigan Producing Division

Date October 12, 1939 No. 217
 State Mich. County Kent ~~Dist.~~ Twp. Walker Sec. 19 Twp. 7 N Rge. 12 W
 Well No. 1 (Serial No.) ~~(County No.)~~ 217 Farm H. DeVos Acres _____
 Operator C. C. Goff, et al Information secured ~~from~~ Scouting Department By _____
 Date well started 8-5-39 Dated well completed 9-18-39 Elevation 727.3

PRODUCTION RECORD

9 days
 1st ~~24 hours~~ natural 5 Bailers Oil and 600 ft. Salt Water. (Dry Hole)
 2nd 24 hours natural _____
 Date of shot _____ No. of quarts _____ From _____ to _____ From _____ to _____
 Date of acid 10-3-39 No. of gallons 500
2 days after ~~shot~~
 1st ~~24 hours after~~ acid 10 Barrels (Swabbed)
 shot _____
 2nd 24 hours after acid _____

FORMATION AND CASING RECORD

Formation	Top	Bottom	Top Pay	Bottom Pay	Remarks	Casing	
						Size	Set at
Marshall	230	280				10"	175
"	292	345				8-1/4"	508
"		498				5-3/16"	1902
Red Rock	1140	1150					
" "	1162	1189					
Berea	1194	1230					
Antrim	1685 ?	1855					
Traverse Lime	1904	S.L.M.		1909	Small show oil.		
				1930	Show salt water.		
				1939	Salt water-3 bailers in 12 hrs.		
Total Depth		2003					
Plugged Back;		1986					

Remarks Last gauge on this well was 2 barrels oil and much salt water. 1893' C.T.M. equals 1910' S.L.M.

Signed D. C. Shackelford