



Western Michigan University
ScholarWorks at WMU

Legacy Scout Tickets from Pure Oil Company

8-20-2021

MGRRE_PureOilScoutTickets_Grand Rapids Ind. Land Assoc._1_21081066850000

MGRRE

Western Michigan University

Follow this and additional works at: <https://scholarworks.wmich.edu/pure>



Part of the Geology Commons

WMU ScholarWorks Citation

MGRRE, "MGRRE_PureOilScoutTickets_Grand Rapids Ind. Land Assoc._1_21081066850000" (2021).

Legacy Scout Tickets from Pure Oil Company. 4121.

<https://scholarworks.wmich.edu/pure/4121>

This Document is brought to you for free and open access via ScholarWorks at WMU. It has been accepted for inclusion in Legacy Scout Tickets from Pure Oil Company by an authorized administrator of ScholarWorks at WMU. See the National Digital Catalogue - Science Base Catalogue for more collections submitted by MGRRE.



**MGRRE_PureOilScoutTickets_Grand Rapids Ind. Land
Assoc._1_21081066850000**

API 21081066850000

Permit Number 6685

Lease Name Grand Rapids Ind. Land Assoc.

Well Number 1

County Kent

Township 06N

Range 12W

Section 26

2021 DEQ or Pure co_name Gordon Oil Company and Fisher McCall Oil and Gas, Incorporated

Pure Number 243

Latitude 42.87789

Longitude -85.688

THE PURE OIL COMPANY

COMPLETION RECORD OF WELLS DRILLED BY OTHER OPERATORS

DATE August 31, 1939

LOCATION REPORT

No. 243

STATE Michigan COUNTY Kent DIST. Wyoming TWP. Wyoming SEC. 26 TOWN 6 N RANGE 12 W

WELL No. 1 (SERIAL No. 243) FARM Grand Rapids Industrial Land Association ACRES

NAME OF STREAM OR WATERS QUADRANGLE SW-SE-NE

OPERATOR Gordon Oil Company, et al Map Wyoming Township, Kent County

Feet from North Line of Farm

330 330 East

330 330 South

330 330 West

Feet from North Line of Section

990 990 East

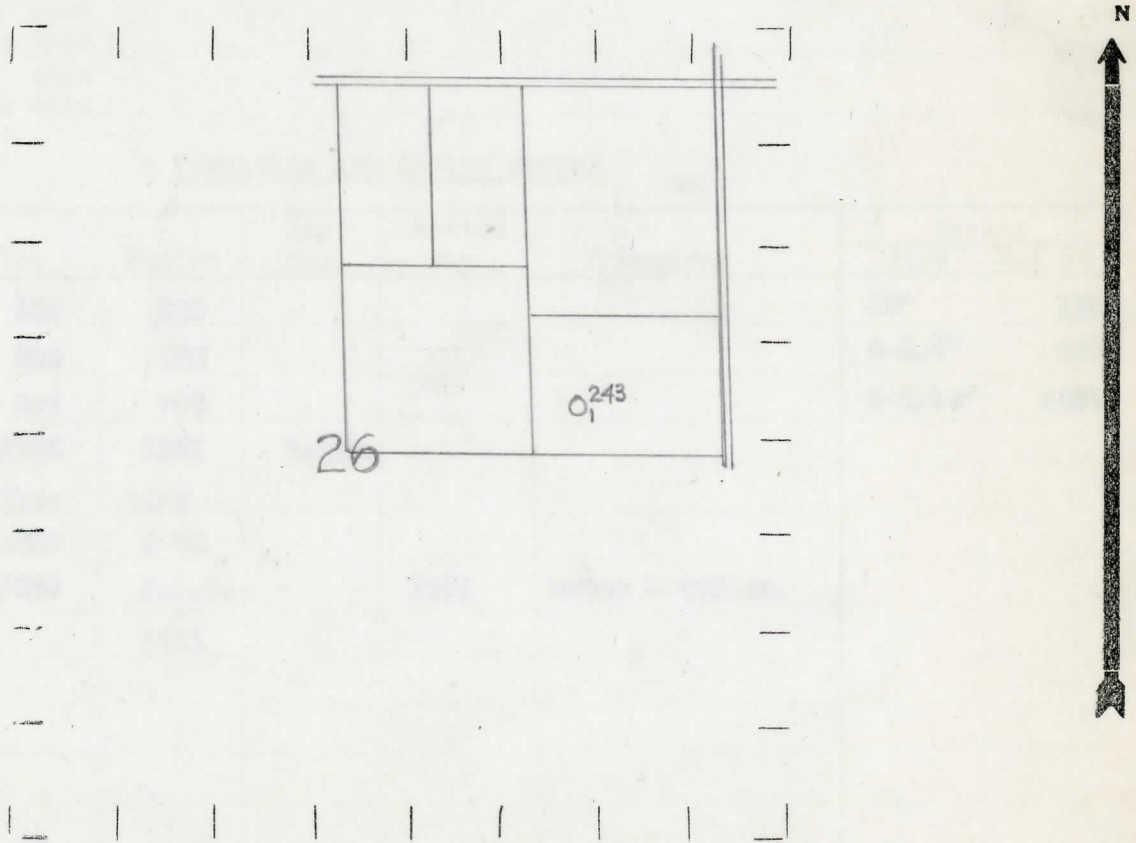
330 330 South 1/4

West

LEGEND

- LOCATION, RIG, DRILLING, GAS WELL, OIL WELL, SMALL OIL WELL, DRY HOLE, DRY SHOWING OIL, DRY SHOWING GAS, ABANDONED LOCATION, ABANDONED GAS WELL, ABANDONED OIL WELL

NOTE: Below make tracing from map, (when no map is obtainable make sketch) showing farm, center of section, this location with measurements and also wells, dry holes, or other locations in the vicinity of this location.



REMARKS:

SIGNED

Superintendent or Foreman.

DATE SEPTEMBER 21 1939

PRODUCTION RECORD

NO 543

Michigan Producing Division

Date September 21, 1939 No. 243
 State Mich. County Kent Dist. Wyoming Twp. 6 N Sec. 26 Rge. 12 W
 Well No. 1 (Serial No.) 243 Farm Grand Rapids Industrial Land Association Acres _____
 Operator Gordon Oil Company, et al Information secured By Scouting Department
 Date well started 8-30-39 Dated well completed 9-15-39 Elevation 681.1

PRODUCTION RECORD

1st 24 hours natural Dry Hole
 2nd 24 hours natural _____
 Date of shot _____ No. of quarts _____ From _____ to _____ From _____ to _____
 Date of acid _____ No. of gallons _____
 1st 24 hours after acid shot _____
 2nd 24 hours after acid shot _____

FORMATION AND CASING RECORD

Formation	Top	Bottom	Top Pay	Bottom Pay	Remarks	Casing	
						Size	Set at
Marshall	160	260				10"	130
"	295	425				8-1/4"	440
Coldwater Lime	695	708				5-5/16"	1831
Red Rock	1155	1162	S.L.M.				
Berea	1166	1185					
Antrim	1630	1780					
Traverse Lime	1829	S.L.M.		1911	Water - 500 ft.		
Total Depth		1911					

Remarks _____

Signed D. C. Shackelford