



Western Michigan University
ScholarWorks at WMU

Legacy Scout Tickets from Pure Oil Company

8-20-2021

MGRRE_PureOilScoutTickets_Certain Teed Products Corp_3_21081066960000

MGRRE

Western Michigan University

Follow this and additional works at: <https://scholarworks.wmich.edu/pure>



Part of the Geology Commons

WMU ScholarWorks Citation

MGRRE, "MGRRE_PureOilScoutTickets_Certain Teed Products Corp_3_21081066960000" (2021). *Legacy Scout Tickets from Pure Oil Company*. 4126.

<https://scholarworks.wmich.edu/pure/4126>

This Document is brought to you for free and open access via ScholarWorks at WMU. It has been accepted for inclusion in Legacy Scout Tickets from Pure Oil Company by an authorized administrator of ScholarWorks at WMU. See the National Digital Catalogue - Science Base Catalogue for more collections submitted by MGRRE.



MGRRE_PureOilScoutTickets_Certain Teed Products Corp_3_21081066960000

API 21081066960000

Permit Number 6696

Lease Name Certain Teed Products Corp

Well Number 3

County Kent

Township 06N

Range 12W

Section 4

2021 DEQ or Pure co_name Goodale Enterprises LLC

Pure Number 248

Latitude 42.9392936

Longitude -85.7289395

THE PURE OIL COMPANY
LOCATION REPORT

DATE September 7, 1939

No. 248

STATE Michigan COUNTY Kent DIST. Walker TWP. Walker SEC. 4 TOWN 6 N RANGE 12 W

WELL No. 8 (SERIAL No. 248) FARM Fee ACRES

NAME OF STREAM OR WATERS _____ QUADRANGLE SW-NE-NE

OPERATOR John Meyer - 5-27-48 Certain-Feed Products Corporation Map Walker Township, Kent County

Feet from North Line of Farm

“ “ East “ “ “

98980 “ “ South “ “ “

33330 “ “ West “ “ “

1291280 Feet from North Line of Section

99990 “ “ East “ “ “

“ “ South “ “ “

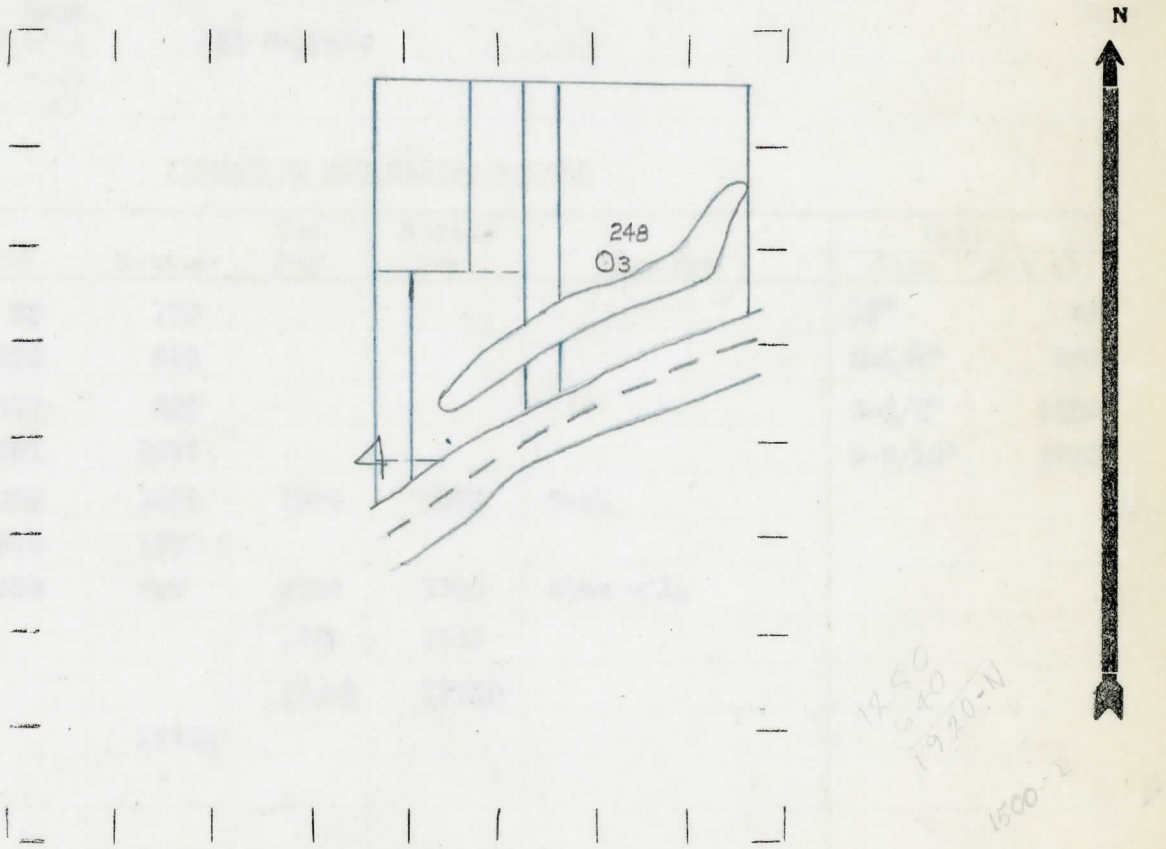
“ “ West “ “ “

Low

LEGEND

- LOCATION
- ⊙ RIG
- ⊕ DRILLING
- ☀ GAS WELL
- OIL WELL
- ⦿ SMALL OIL WELL
- ⊖ DRY HOLE
- ⦿ DRY SHOWING OIL
- ⊖ DRY SHOWING GAS
- ⊖ ABANDONED LOCATION
- ☀ ABANDONED GAS WELL
- ⦿ ABANDONED OIL WELL

NOTE: Below make tracing from map, (when no map is obtainable make sketch) showing farm, center of section, this location with measurements and also wells, dry holes, or other locations in the vicinity of this location.



REMARKS:

SIGNED

Superintendent or Foreman.

COMPLETION RECORD OF WELLS DRILLED BY OTHER OPERATORS

Michigan Producing Division

Date **November 22, 1939** No. **248**
 State **Mich.** County **Kent** Dist. **Walker** Twp. **Walker** Sec. **4** Twp. **6 N** Rge. **12 W**
 Well No. **3** (Serial No.) **248** Farm **Fee** Acres
 Operator **Certain-Teed Products Corp.** Information secured ~~from~~ **Scouting Department**
 Date well started **10-20-39** Dated well completed **11-11-39** Elevation **595.6**

PRODUCTION RECORD

1st 24 hours natural **45 Barrels**
 2nd 24 hours natural
 Date of shot No. of quarts From to From to
 Date of acid **11-14-39** No. of gallons **1000**
12 ~~24~~ hours after acid **241 Barrels** ~~shot~~
 2nd 24 hours after acid

FORMATION AND CASING RECORD

| Formation | Top | Bottom | Top Pay | Bottom Pay | Remarks | Casing | |
|----------------|------|----------|----------|------------|-----------|---------|--------|
| | | | | | | Size | Set at |
| Marshall | 65 | 170 | | | | 10" | 49 |
| " | 198 | 325 | | | | 8-1/4" | 361 |
| Coldwater Lime | 617 | 627 | | | | 6-5/8" | 1120 |
| Red Rock | 1051 | 1092 | | | | 5-3/16" | 1720 |
| Berea | 1072 | 1092 | 1074 | 1079 | Gas. | | |
| Antrim | 1511 | 1690 ? | | | | | |
| Traverse Lime | 1738 | SLM | 1740 | 1745 | Show oil. | | |
| | | | 1759 | 1765 | | | |
| | | | 1766 1/2 | 1772 1/2 | | | |
| Total Depth | | 1776 1/2 | | | | | |

Remarks **On 11-15-39 produced 130 bbls. in 24 hrs.; 11-16-39 produced 103 bbls. in 24 hrs.**

Signed **D. C. Shackelford**