



Western Michigan University  
ScholarWorks at WMU

---

Legacy Scout Tickets from Pure Oil Company

---

8-20-2021

**MGRRE\_PureOilScoutTickets\_Bultema, J.\_1\_21081067520000**

MGRRE

*Western Michigan University*

Follow this and additional works at: <https://scholarworks.wmich.edu/pure>



Part of the Geology Commons

---

#### **WMU ScholarWorks Citation**

MGRRE, "MGRRE\_PureOilScoutTickets\_Bultema, J.\_1\_21081067520000" (2021). *Legacy Scout Tickets from Pure Oil Company*. 4142.

<https://scholarworks.wmich.edu/pure/4142>

This Document is brought to you for free and open access via ScholarWorks at WMU. It has been accepted for inclusion in Legacy Scout Tickets from Pure Oil Company by an authorized administrator of ScholarWorks at WMU. See the National Digital Catalogue - Science Base Catalogue for more collections submitted by MGRRE.



---

**MGRRE\_PureOilScoutTickets\_Bultema, J.\_1\_21081067520000**

API 21081067520000

Permit Number 6752

Lease Name Bultema, J.

Well Number 1

County Kent

Township 07N

Range 12W

Section 29

2021 DEQ or Pure co\_name Fisher McCall Oil and Gas, Incorporated and Sackner, W. E.

Pure Number 264

Latitude 42.9666

Longitude -85.7572

THE PURE OIL COMPANY  
LOCATION REPORT

DATE September 21, 1939  
STATE Michigan COUNTY Kent DISTRICT Walker TWP. Walker SEC. 29 TOWN 7 N RANGE 12 W  
WELL No. 11 (SERIAL No. 264) FARM J. Bultema ACRES  
NAME OF STREAM OR WATERS \_\_\_\_\_ QUADRANGLE C E 1/2 SE NW

OPERATOR Fisher-McCall Oil & Gas, Inc., et al Map Walker Township, Kent County  
Fisher & McCall Oil & Gas Ltd Walker-Kent

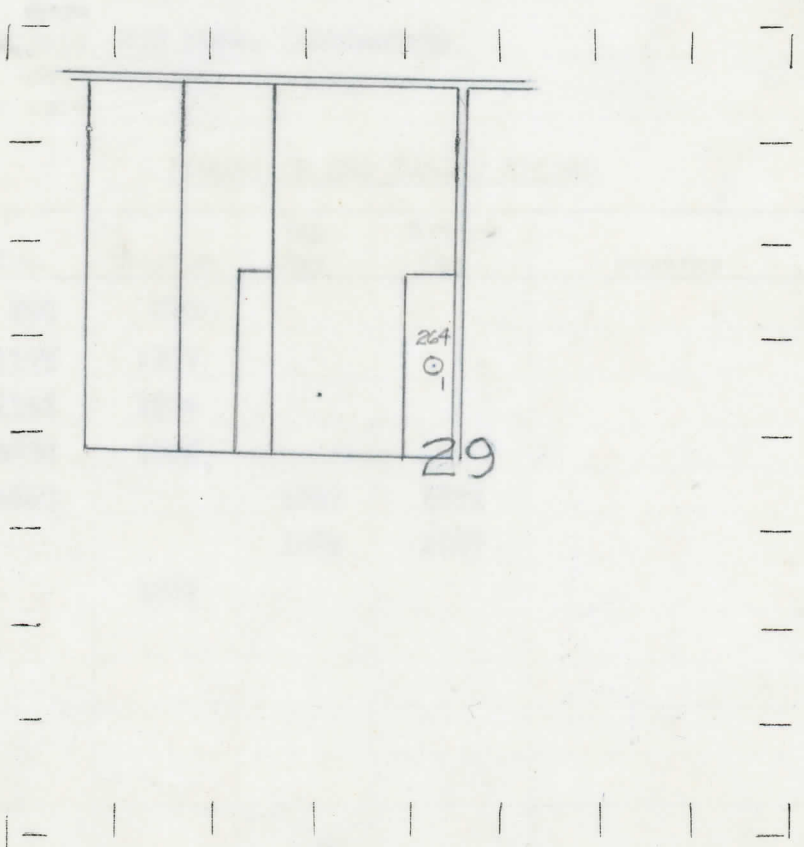
Feet from North Line of Farm  
19198 " " East " " "  
66660 " " South " " "  
19198 " " West " " "

Feet from North Line of Section  
19198 " " East "1/4" "  
66660 " " South "1/4" "  
" " West " " "

*Low*

- LEGEND**
- LOCATION
  - ⊕ DRILLING
  - ☀ GAS WELL
  - OIL WELL
  - ⬮ SMALL OIL WELL
  - ⊖ DRY HOLE
  - ⊕ DRY SHOWING OIL
  - ⊖ DRY SHOWING GAS
  - ⊖ ABANDONED LOCATION
  - ☀ ABANDONED GAS WELL
  - ⬮ ABANDONED OIL WELL

NOTE: Below make tracing from map, (when no map is obtainable make sketch) showing farm, center of section, this location with measurements and also wells, dry holes, or other locations in the vicinity of this location.



REMARKS:  
\_\_\_\_\_  
\_\_\_\_\_

SIGNED \_\_\_\_\_  
Subintendent or Foreman.

*198  
29  
297-300 E  
990-9*

Michigan Producing Division

Date 10-26-39 No. 264  
 State Mich. County Kent Dist. \_\_\_\_\_  
 (Serial No.) Twp. Walker Sec. 29 Twp. 7N Rge. 12W  
 Well No. 1 (County No.) 264 Farm J. Bultema Acres \_\_\_\_\_  
 Operator Fisher-McCall Oil & Gas, Inc. et al By \_\_\_\_\_  
 Information secured from Scouting Department  
 Date well started 9-27-39 Dated well completed 10-14-39 Elevation 718.1

PRODUCTION RECORD

1st 24 hours natural 1700' Oil in hole  
 2nd 24 hours natural \_\_\_\_\_  
 Date of shot \_\_\_\_\_ No. of quarts \_\_\_\_\_ From \_\_\_\_\_ to \_\_\_\_\_ From \_\_\_\_\_ to \_\_\_\_\_  
 Date of acid 10-18-39 No. of gallons 500  
 1st 24 hours after acid shot 432 bbls. (Estimated)  
 2nd 24 hours after acid shot \_\_\_\_\_

FORMATION AND CASING RECORD

Formation	Top	Bottom	Top Pay	Bottom Pay	Remarks	Casing	
						Size	Set at
Marshall	200	470				10"	158
Red Rock	1175	1187				8 1/2"	500
Berea	1192	1224				5-3/16"	1867
Antrim	1674	1825					
Traverse Lime	1867		1867	1871			
			1883	1887			
Total Depth		1887					

Remarks \_\_\_\_\_

Signed D. C. Shackelford