



Western Michigan University
ScholarWorks at WMU

Legacy Scout Tickets from Pure Oil Company

8-20-2021

MGRRE_PureOilScoutTickets_Courtad_1_21081068660000

MGRRE

Western Michigan University

Follow this and additional works at: <https://scholarworks.wmich.edu/pure>



Part of the Geology Commons

WMU ScholarWorks Citation

MGRRE, "MGRRE_PureOilScoutTickets_Courtad_1_21081068660000" (2021). *Legacy Scout Tickets from Pure Oil Company*. 4183.

<https://scholarworks.wmich.edu/pure/4183>

This Document is brought to you for free and open access via ScholarWorks at WMU. It has been accepted for inclusion in Legacy Scout Tickets from Pure Oil Company by an authorized administrator of ScholarWorks at WMU. See the National Digital Catalogue - Science Base Catalogue for more collections submitted by MGRRE.



MGRRE_PureOilScoutTickets_Courtad_1_21081068660000

API 21081068660000

Permit Number 6866

Lease Name Courtad

Well Number 1

County Kent

Township 08N

Range 12W

Section 7

2021 DEQ or Pure co_name Lenoran Petroleum Company

Pure Number 305

Latitude 43.10251

Longitude -85.78709

THE PURE OIL COMPANY
COMPLETION RECORD OF WELLS DRILLED BY OTHER OPERATORS
LOCATION REPORT

DATE October 12, 1939

No. 305

STATE Michigan COUNTY Kent DIST. Alpine TWP. Alpine SEC. 7 TOWN 8 N RANGE 12 W

WELL No. 1 (SERIAL No. 305) FARM Courted ACRES

NAME OF STREAM OR WATERS _____ QUADRANGLE NW-NW-NW
NW NW NW

OPERATOR Lenoran Petroleum Company Map Alpine Township, Kent County
Lenoran Pet. Co. Alpine-Kent

396 296 Feet from North Line of Farm

“ “ East “ “ “

“ “ South “ “ “

482 482 “ “ West “ “ “

296 296 Feet from North Line of Section

“ “ East “ “ “

“ “ South “ “ “

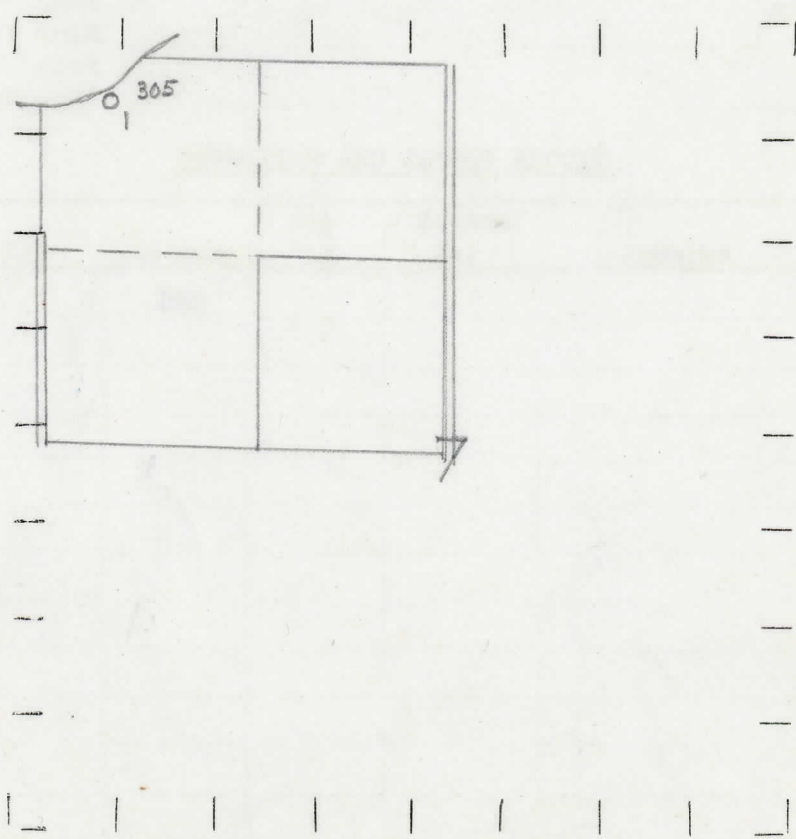
482 482 “ “ West “ “ “

Sp 10-10-39

LEGEND

- LOCATION
- ⊕ RIG
- ⊕ DRILLING
- ☀ GAS WELL
- OIL WELL
- ⊕ SMALL OIL WELL
- ⊕ DRY HOLE
- ⊕ DRY SHOWING OIL
- ⊕ DRY SHOWING GAS
- ⊕ ABANDONED LOCATION
- ☀ ABANDONED GAS WELL
- ⊕ ABANDONED OIL WELL

NOTE: Below make tracing from map, (when no map is obtainable make sketch) showing farm, center of section, this location with measurements and also wells, dry holes, or other locations in the vicinity of this location.



REMARKS:

SIGNED

Superintendent or Foreman.

