



Western Michigan University
ScholarWorks at WMU

Legacy Scout Tickets from Pure Oil Company

8-20-2021

**MGRRE_PureOilScoutTickets_Cudahy, John F et
al_4_21081070040000**

MGRRE
Western Michigan University

Follow this and additional works at: <https://scholarworks.wmich.edu/pure>



Part of the Geology Commons

WMU ScholarWorks Citation

MGRRE, "MGRRE_PureOilScoutTickets_Cudahy, John F et al_4_21081070040000" (2021). *Legacy Scout Tickets from Pure Oil Company*. 4232.
<https://scholarworks.wmich.edu/pure/4232>

This Document is brought to you for free and open access via ScholarWorks at WMU. It has been accepted for inclusion in Legacy Scout Tickets from Pure Oil Company by an authorized administrator of ScholarWorks at WMU. See the National Digital Catalogue - Science Base Catalogue for more collections submitted by MGRRE.



MGRRE_PureOilScoutTickets_Cudahy, John F et al_4_21081070040000

API 21081070040000

Permit Number 7004

Lease Name Cudahy, John F et al

Well Number 4

County Kent

Township 07N

Range 12W

Section 33

2021 DEQ or Pure co_name Smith Petroleum Company

Pure Number 354

Latitude 42.95264

Longitude -85.73776

THE PURE OIL COMPANY

COMPLETION RECORD OF WELLS DRILLED BY OTHER OPERATORS

DATE Nov. 9, 1939

LOCATION REPORT

No. 354

STATE Michigan COUNTY Kent DISTRICT Walker TWP Walker SEC. 33 TOWN 7 N RANGE 12 W

WELL No. 4 (SERIAL No. 354) FARM J. F. Cudahy, et al ACRES

NAME OF STREAM OR WATERS _____ QUADRANGLE NE SE NW

OPERATOR Smith Petroleum Company Map Walker Township, Kent County
Smith Pet. Co. Walker-Kent

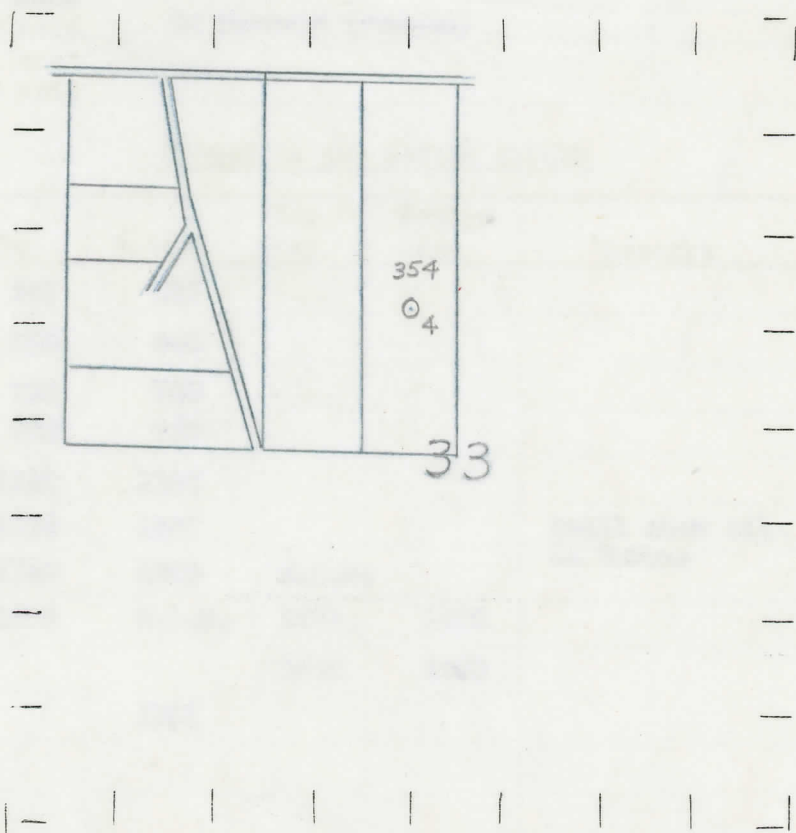
Feet from North Line of Farm
" " East " " "
990 990 " " South " " "
330 330 " " West " " "

Feet from North Line of Section
330 330 " " East 1/4 "
990 990 " " South 1/4 "
" " West " " "

LEGEND

- LOCATION
- ⊙ RIG
- ⊕ DRILLING
- ☀ GAS WELL
- OIL WELL
- ⬮ SMALL OIL WELL
- ⊖ DRY HOLE
- ⊙ DRY SHOWING OIL
- ⊖ DRY SHOWING GAS
- ⊖ ABANDONED LOCATION
- ☀ ABANDONED GAS WELL
- ⬮ ABANDONED OIL WELL

NOTE: Below make tracing from map. (when no map is obtainable make sketch) showing farm, center of section, this location with measurements and also wells, dry holes, or other locations in the vicinity of this location.



REMARKS:

SIGNED

Superintendent or Foreman.

COMPLETION RECORD OF WELLS DRILLED BY OTHER OPERATORS

Michigan Producing Division

Date December 28, 1939 No. 354
 State Mich. County Kent Dist. Walker Twp. 7 N Sec. 33 Rge. 12 W
 (Serial No.)
 Well No. 4 (~~County No.~~) 354 Farm J. F. Cudahy, et al Acres
 Operator Smith Petroleum Company By Scouting Department
 Information secured ~~from~~ Scouting Department
 Date well started 11-15-39 Dated well completed 12-7-39 Elevation 709.9

PRODUCTION RECORD

1st 24 hours natural Filled up 250 ft.
 2nd 24 hours natural
 Date of shot 12-9-39 No. of quarts 1000 From 1000 to 1000
 Date of acid 12-2-39 No. of gallons 1000 (Total Gals. 2000)
~~shot~~
 1st 24 hours after acid 40 Barrels (Pumped)
 shot
 2nd 24 hours after acid

FORMATION AND CASING RECORD

Formation	Top	Bottom	Top Pay	Bottom Pay	Remarks	Casing	
						Size	Set at
Marshall	287	325				10"	164
"	350	440				8-1/4"	482
Coldwater Line	730	740				5-3/16"	1846
" "	750	760					
Red Rock	1182	1198					
Berea	1198	1227			Small show oil in Berea.		
Antrim	1700	1820	S.L.M.				
Traverse Line	1868	S.L.M.	1871	1876			
			1885	1890			
Total Depth		1902					

Remarks

Signed D. C. Shackelford