



Western Michigan University
ScholarWorks at WMU

Legacy Scout Tickets from Pure Oil Company

8-20-2021

**MGRRE_PureOilScoutTickets_Martin, John
B._1_21081070150000**

MGRRE
Western Michigan University

Follow this and additional works at: <https://scholarworks.wmich.edu/pure>



Part of the Geology Commons

WMU ScholarWorks Citation

MGRRE, "MGRRE_PureOilScoutTickets_Martin, John B._1_21081070150000" (2021). *Legacy Scout Tickets from Pure Oil Company*. 4238.
<https://scholarworks.wmich.edu/pure/4238>

This Document is brought to you for free and open access via ScholarWorks at WMU. It has been accepted for inclusion in Legacy Scout Tickets from Pure Oil Company by an authorized administrator of ScholarWorks at WMU. See the National Digital Catalogue - Science Base Catalogue for more collections submitted by MGRRE.



MGRRE_PureOilScoutTickets_Martin, John B._1_21081070150000

API 21081070150000

Permit Number 7015

Lease Name Martin, John B.

Well Number 1

County Kent

Township 07N

Range 12W

Section 35

2021 DEQ or Pure co_name Flanigan, James E.

Pure Number 360

Latitude 42.95192

Longitude -85.7057

THE PURE OIL COMPANY

DATE Nov. 9, 1939

LOCATION REPORT

No. 360

STATE Michigan COUNTY Kent DIST. Walker TWP. Walker SEC. 35 TOWN 7 N RANGE 12 W

WELL No. 1 (SERIAL No. 360) FARM John B. Martin ACRES NW SW NW

NAME OF STREAM OR WATERS _____ QUADRANGLE NW SW NW

OPERATOR James E. Flanigan Map Walker Township, Kent County

Jas. E. Flanigan
Feet from North Line of Farm

Walker - Kent

1095 1095 " " East " " "

330 330 " " South " " "

330 330 " " West " " "

Feet from North Line of Section

945 945 " " East " " "

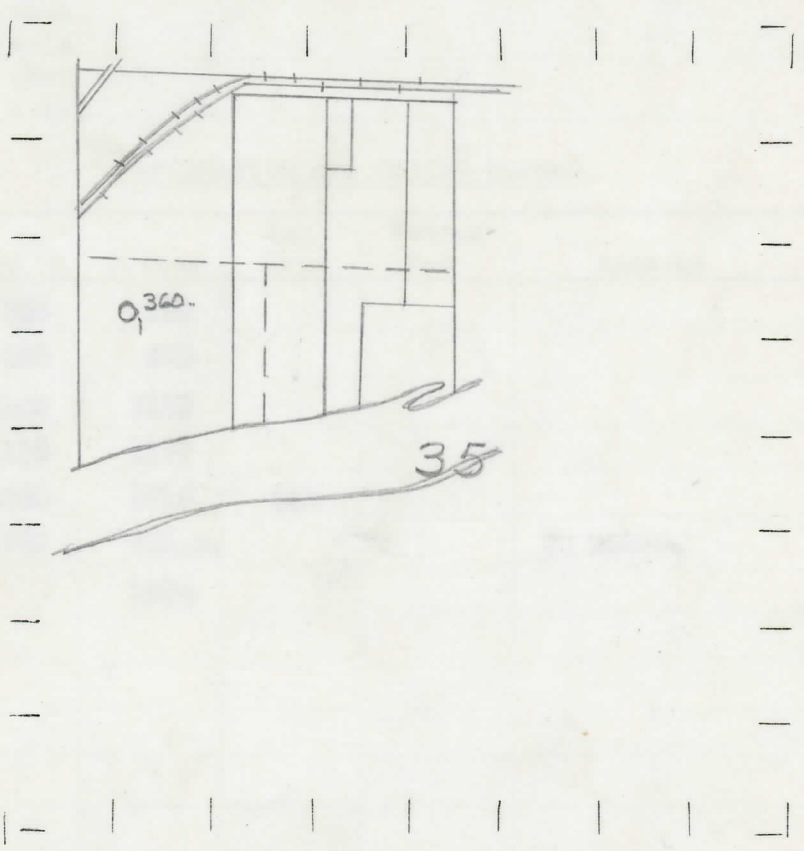
330 330 " " South " 1/4 "

330 330 " " West " " "

LEGEND

- LOCATION
- ⊕ RIG
- ⊕ DRILLING
- ☀ GAS WELL
- OIL WELL
- SMALL OIL WELL
- ⊙ DRY HOLE
- DRY SHOWING OIL
- ⊙ DRY SHOWING GAS
- ⊙ ABANDONED LOCATION
- ☀ ABANDONED GAS WELL
- ABANDONED OIL WELL

NOTE: Below make tracing from map, (when no map is obtainable make sketch) showing farm, center of section, this location with measurements and also wells, dry holes, or other locations in the vicinity of this location.



REMARKS:

SIGNED

Superintendent or Foreman.

Michigan Producing Division

Date **December 28, 1939** No. **360**
 State **Mich.** County **Kent** Dist. **Walker** Twp. **7 N** Sec. **35** Rge. **12 W**
 (Serial No.)
 Well No. **1** (County No.) **360** Farm **John B. Martin** Acres
 Operator **James E. Flanigan** By **Scouting Department**
 Information secured ~~from~~ **Scouting Department**
 Date well started **11-15-39** Dated well completed **12-6-39** Elevation **596.9**

PRODUCTION RECORD

1st 24 hours natural **Dry Hole**
 2nd 24 hours natural
 Date of shot No. of quarts From to From to
 Date of acid No. of gallons
 shot
 1st 24 hours after acid
 shot
 2nd 24 hours after acid

FORMATION AND CASING RECORD

Formation	Top	Bottom	Top Pay	Bottom Pay	Remarks	Casing	
						Size	Set at
Marshall	105	210				10"	37
"	225	373				8-1/4"	112
Red Rock	1100	1119				6-5/8"	420
Berea	1119	1157					
Antrim	1600	1716	SLM				
Traverse Lime	1781	S.L.M.			No water.		
Total Depth		1930					

Remarks

Signed **D. C. Shackelford**