



Western Michigan University  
ScholarWorks at WMU

---

Legacy Scout Tickets from Pure Oil Company

---

8-20-2021

**MGRRE\_PureOilScoutTickets\_Newhouse,  
Sam\_3\_21081070590000**

MGRRE  
*Western Michigan University*

Follow this and additional works at: <https://scholarworks.wmich.edu/pure>



Part of the Geology Commons

---

#### **WMU ScholarWorks Citation**

MGRRE, "MGRRE\_PureOilScoutTickets\_Newhouse, Sam\_3\_21081070590000" (2021). *Legacy Scout Tickets from Pure Oil Company*. 4256.  
<https://scholarworks.wmich.edu/pure/4256>

This Document is brought to you for free and open access via ScholarWorks at WMU. It has been accepted for inclusion in Legacy Scout Tickets from Pure Oil Company by an authorized administrator of ScholarWorks at WMU. See the National Digital Catalogue - Science Base Catalogue for more collections submitted by MGRRE.



---

**MGRRE\_PureOilScoutTickets\_Newhouse, Sam\_3\_21081070590000**

API 21081070590000

Permit Number 7059

Lease Name Newhouse, Sam

Well Number 3

County Kent

Township 07N

Range 12W

Section 29

2021 DEQ or Pure co\_name Goodale, Jack

Pure Number 378

Latitude 42.96722

Longitude -85.75954

THE PURE OIL COMPANY

COMPLETION RECORD OF WELLS DRILLED BY OTHER OPERATORS

DATE November 22, 1939

LOCATION REPORT

No. 378

STATE Michigan COUNTY Kent DIST. Walker TWP. Walker SEC. 29 TOWN. 7 N RANGE 12 W

WELL No. 3 (SERIAL No. 378) FARM Newhouse ACRES

NAME OF STREAM OR WATERS \_\_\_\_\_ QUADRANGLE NW-SE-NW

OPERATOR Fisher-McCall Oil & Gas, Inc., et al Map Walker Township, Kent County

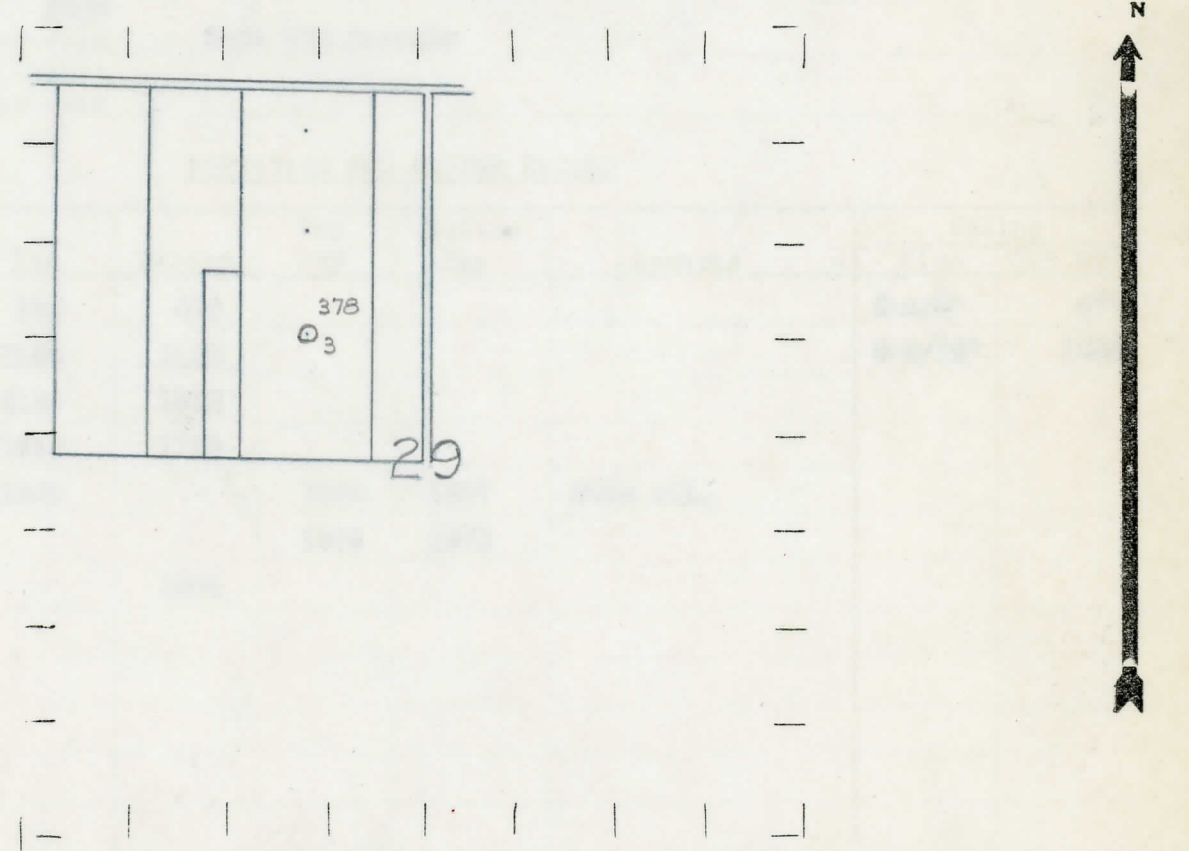
Fisher-McCall Inc, et al Walker-Kent

Feet from North Line of Farm  
4330 " " East " " "  
87870 " " South " " "  
 " " West " " "

Feet from North Line of Section  
82820 " " East " 1/4 "  
87870 " " South " 1/4 "  
 " " West " " "

- LEGEND**
- LOCATION
  - ⊕ DRILLING
  - ☀ GAS WELL
  - OIL WELL
  - ⊖ SMALL OIL WELL
  - ⊙ DRY HOLE
  - ⊕ DRY SHOWING OIL
  - ⊙ DRY SHOWING GAS
  - ⊖ ABANDONED LOCATION
  - ☀ ABANDONED GAS WELL
  - ⊖ ABANDONED OIL WELL

NOTE: Below make tracing from map, (when no map is obtainable make sketch) showing farm, center of section, this location with measurements and also wells, dry holes, or other locations in the vicinity of this location.



REMARKS: \_\_\_\_\_  
 \_\_\_\_\_  
 \_\_\_\_\_

SIGNED

Subintendent or Foreman.

1230-E  
1305-S

