



Western Michigan University
ScholarWorks at WMU

Legacy Scout Tickets from Pure Oil Company

8-20-2021

MGRRE_PureOilScoutTickets_Certain Teed Products Corp_9_21081071350000

MGRRE

Western Michigan University

Follow this and additional works at: <https://scholarworks.wmich.edu/pure>



Part of the Geology Commons

WMU ScholarWorks Citation

MGRRE, "MGRRE_PureOilScoutTickets_Certain Teed Products Corp_9_21081071350000" (2021). *Legacy Scout Tickets from Pure Oil Company*. 4275.
<https://scholarworks.wmich.edu/pure/4275>

This Document is brought to you for free and open access via ScholarWorks at WMU. It has been accepted for inclusion in Legacy Scout Tickets from Pure Oil Company by an authorized administrator of ScholarWorks at WMU. See the National Digital Catalogue - Science Base Catalogue for more collections submitted by MGRRE.



MGRRE_PureOilScoutTickets_Certain Teed Products Corp_9_21081071350000

API 21081071350000

Permit Number 7135

Lease Name Certain Teed Products Corp

Well Number 9

County Kent

Township 06N

Range 12W

Section 4

2021 DEQ or Pure co_name Goodale Enterprises LLC

Pure Number 397

Latitude 42.9397022

Longitude -85.7267099

THE PURE OIL COMPANY

DATE December 20, 1939

LOCATION REPORT

No. 397

STATE Michigan COUNTY Kent DISTRICT Walker TWP. Walker SEC. 4 TOWN 6 N RANGE 12 W
 WELL No. 97 (SERIAL No. 397) FARM Fee ACRES

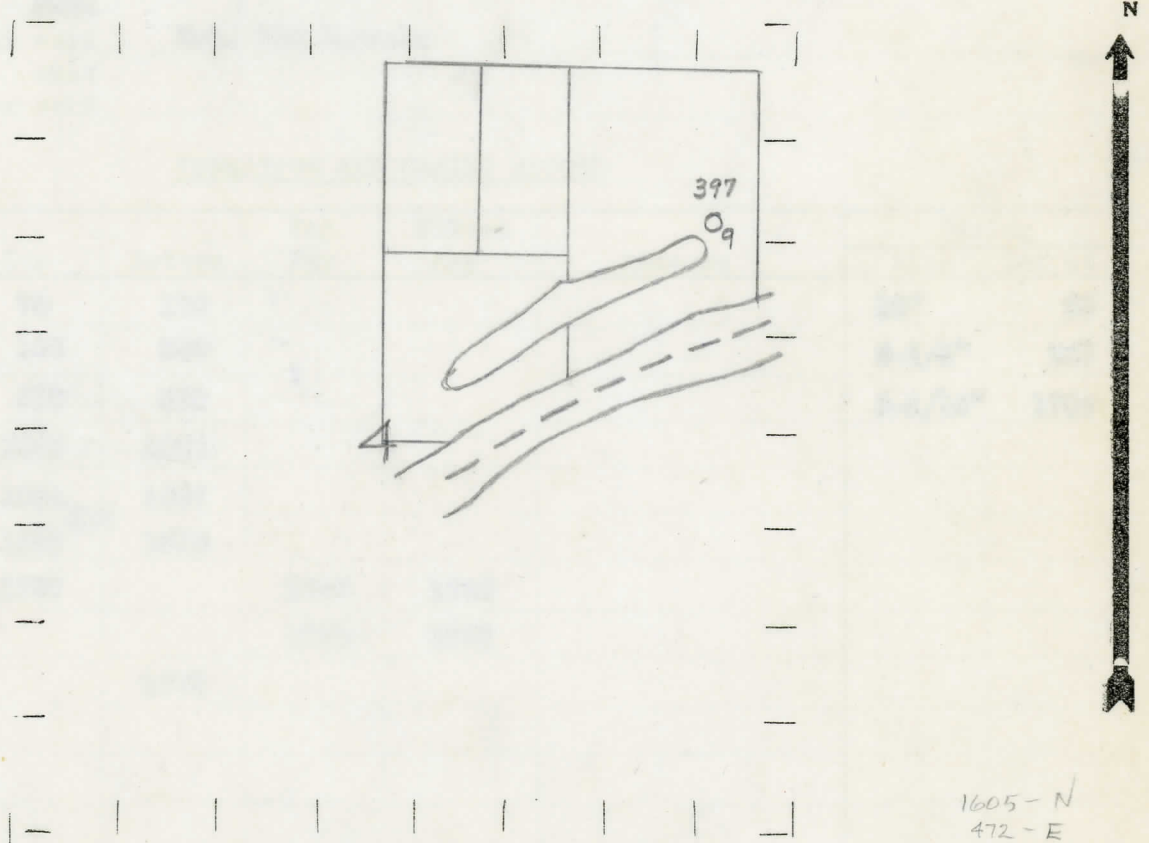
NAME OF STREAM OR WATERS _____ QUADRANGLE SE-NE-NE
 OPERATOR John Meyer - 8-27-48 Certain-Feed Products Corp. Map Walker Township, Kent County
Certain-Feed Prod. Corp. Walker-Kent

Feet from North Line of Farm
 " " East " " "
101045 " " South " " "
94040 " " West " " "
107070 Feet from North Line of Section
31315 " " East " " "
 " " South " " "
 " " West " " "

LEGEND

- LOCATION
- ⊕ DRILLING
- ☀ GAS WELL
- OIL WELL
- ⊙ SMALL OIL WELL
- ⊖ DRY HOLE
- ⊙ DRY SHOWING OIL
- ⊖ DRY SHOWING GAS
- ⊙ ABANDONED LOCATION
- ☀ ABANDONED GAS WELL
- ⊙ ABANDONED OIL WELL

NOTE: Below make tracing from map, (when no map is obtainable make sketch) showing farm, center of section, this location with measurements and also wells, dry holes, or other locations in the vicinity of this location.



1605 - N
472 - E

REMARKS:

SIGNED

Superintendent or Foreman.

Michigan Producing Division

Date January 17, 1940 No. 397
 State Mich. County Kent ~~Dist.~~ Twp. Walker Sec. 4 Twp. 6 N Rge. 12 W
 Well No. 9 (~~Serial No.~~) 397 Farm Fee Acres _____
 Operator Certain-Teed Products Corp. Information secured ~~xxxx~~ By Scouting Department
 Date well started 12-13-39 Dated well completed 1-8-40 Elevation 594.6

PRODUCTION RECORD

1st 24 hours natural 60 Barrels
 2nd 24 hours natural _____
 Date of shot _____ No. of quarts _____ From _____ to _____ From _____ to _____
 Date of acid 1-12-40 No. of gallons 1000
~~xxxx~~
 1st 24 hours after acid, Est. 350 Barrels
 shot _____
 2nd 24 hours after acid _____

FORMATION AND CASING RECORD

| Formation | Top | Bottom | Top Pay | Bottom Pay | Remarks | Casing | |
|----------------|---------------------|--------|---------|------------|---------|---------|--------|
| | | | | | | Size | Set at |
| Marshall | 70 | 170 | | | | 10" | 23 |
| " | 198 | 330 | | | | 8-1/4" | 367 |
| Coldwater Line | 610 | 620 | | | | 5-3/16" | 1706 |
| Red Rock | 1045 | 1064 | | | | | |
| Berea | 1064 | 1087 | | | | | |
| Antrim | 1563 ^{SLM} | 1678 | | | | | |
| Traverse Line | 1737 | | 1740 | 1745 | | | |
| | | | 1758 | 1768 | | | |
| Total Depth | | 1772 | | | | | |

Remarks _____

Signed D. C. Shackelford