



Western Michigan University
ScholarWorks at WMU

Legacy Scout Tickets from Pure Oil Company

8-20-2021

MGRRE_PureOilScoutTickets_Certain-Teed Products Corp_10_21081072180000

MGRRE

Western Michigan University

Follow this and additional works at: <https://scholarworks.wmich.edu/pure>



Part of the Geology Commons

WMU ScholarWorks Citation

MGRRE, "MGRRE_PureOilScoutTickets_Certain-Teed Products Corp_10_21081072180000" (2021). *Legacy Scout Tickets from Pure Oil Company*. 4291.

<https://scholarworks.wmich.edu/pure/4291>

This Document is brought to you for free and open access via ScholarWorks at WMU. It has been accepted for inclusion in Legacy Scout Tickets from Pure Oil Company by an authorized administrator of ScholarWorks at WMU. See the National Digital Catalogue - Science Base Catalogue for more collections submitted by MGRRE.



MGRRE_PureOilScoutTickets_Certain-Teed Products Corp_10_21081072180000

API 21081072180000

Permit Number 7218

Lease Name Certain-Teed Products Corp

Well Number 10

County Kent

Township 07N

Range 12W

Section 33

2021 DEQ or Pure co_name Goodale Enterprises LLC

Pure Number 413

Latitude 42.9504371

Longitude -85.7302813

THE PURE OIL COMPANY

DATE January 10, 1940

LOCATION REPORT

No. 413

STATE Michigan COUNTY Kent DIST. Walker TWP. Walker SEC. 33 TOWN 7 N RANGE 12 W
 WELL No. 10 (SERIAL No. 413) FARM Fee ACRES

NAME OF STREAM OR WATERS _____ QUADRANGLE SW-SE-NE

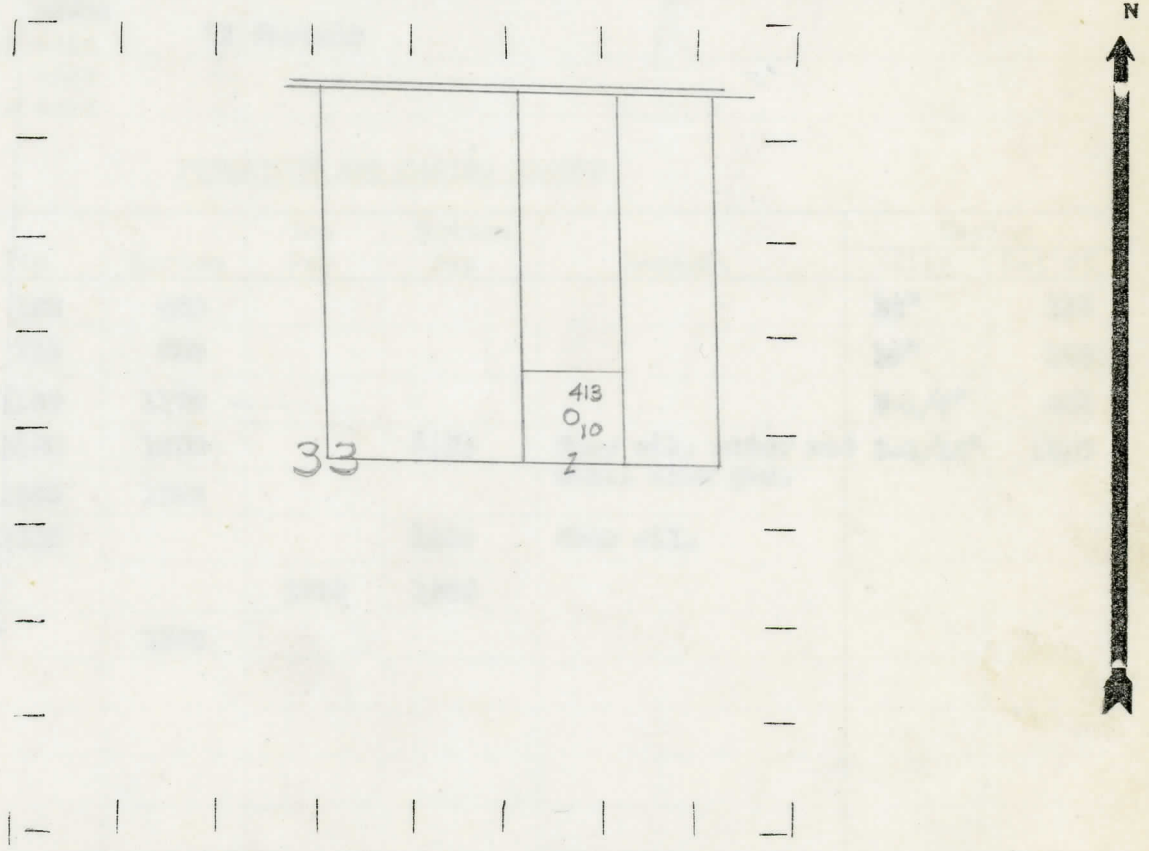
OPERATOR John Meyer - 8-27-48 Map Walker Township, Kent County
Certain Feed Products Corporation
33330 Certain Feed Prod. Corp. Walker - Kent
 Feet from North Line of Farm

“ “ East “ “ “
 “ “ South “ “ “
33330 “ “ West “ “ “
 Feet from North Line of Section
990990 “ “ East “ “ “
330330 “ “ South “ “ 1/4 “
 “ “ West “ “ “

LEGEND

- LOCATION
- ⊕ DRILLING
- ☀ GAS WELL
- OIL WELL
- ⊙ SMALL OIL WELL
- ⊖ DRY HOLE
- ⊕ DRY SHOWING OIL
- ⊖ DRY SHOWING GAS
- ⊖ ABANDONED LOCATION
- ☀ ABANDONED GAS WELL
- ⊖ ABANDONED OIL WELL

NOTE: Below make tracing from map, (when no map is obtainable make sketch) showing farm, center of section, this location with measurements and also wells, dry holes, or other locations in the vicinity of this location.



REMARKS: _____

SIGNED

Superintendent or Foreman.

COMPLETION RECORD OF WELLS DRILLED BY OTHER OPERATORS

Michigan Producing Division

Date **February 14, 1940** No. **413**
 State **Mich.** County **Kent** ~~Dist.~~ Twp. **Walker** Sec. **33** Twp. **7 N** Rge. **12 W**
 Well No. **10** (~~County No.~~) **413** Farm **Fee** Acres _____
 Operator **Certain-Teed Products Corp.** Information secured ~~from~~ **By Scouting Department**
 Date well started **1-11-40** Dated well completed **2-7-40** Elevation **693.1**

PRODUCTION RECORD

1st 24 hours natural **Filled up 1200 ft.**
 2nd 24 hours natural _____
 Date of shot _____ No. of quarts _____ From _____ to _____ From _____ to _____
 Date of acid **2-8-40** No. of gallons **1000**
 1st 24 hours after acid ~~shot~~ **71 Barrels**
 shot
 2nd 24 hours after acid _____

FORMATION AND CASING RECORD

Formation	Top	Bottom	Top Pay	Bottom Pay	Remarks	Casing	
						Size	Set at
Marshall	192	450				14"	125
Coldwater Lime	739	765				10"	185
Red Rock	1169	1176				8-1/4"	461
Berea	1180	1200		1183	Show oil, water and small show gas.	5-3/16"	1810
Antrim	1660	1796					
Traverse Lime	1856			1859	Show oil.		
			1859	1868			
Total Depth		1895					

Remarks **This well produced 25 bbls. the third day after acid.**

Signed **D. C. Shackelford**