



Western Michigan University
ScholarWorks at WMU

Legacy Scout Tickets from Pure Oil Company

8-20-2021

MGRRE_PureOilScoutTickets_Muth, Minna_1_21081074450000

MGRRE

Western Michigan University

Follow this and additional works at: <https://scholarworks.wmich.edu/pure>



Part of the Geology Commons

WMU ScholarWorks Citation

MGRRE, "MGRRE_PureOilScoutTickets_Muth, Minna_1_21081074450000" (2021). *Legacy Scout Tickets from Pure Oil Company*. 4330.

<https://scholarworks.wmich.edu/pure/4330>

This Document is brought to you for free and open access via ScholarWorks at WMU. It has been accepted for inclusion in Legacy Scout Tickets from Pure Oil Company by an authorized administrator of ScholarWorks at WMU. See the National Digital Catalogue - Science Base Catalogue for more collections submitted by MGRRE.



MGRRE_PureOilScoutTickets_Muth, Minna_1_21081074450000

API 21081074450000

Permit Number 7445

Lease Name Muth, Minna

Well Number 1

County Kent

Township 07N

Range 12W

Section 28

2021 DEQ or Pure co_name Wolverine Natural Gas Company

Pure Number 452

Latitude 42.96536

Longitude -85.73795

THE PURE OIL COMPANY

LOCATION REPORT

No. 452

DATE March 13, 1940

STATE Michigan COUNTY Kent DIST Walker TWP Walker SEC 28 TOWN 7 N RANGE 12 W
WELL No. 1 (SERIAL No. 452) FARM Minnamuth

NAME OF STREAM OR WATERS QUADRANGLE SE SE NW

OPERATOR Wolverine Natural Gas Corporation Map Walker Township, Kent County
Wolverine Natural Gas Corp Walker - Kent

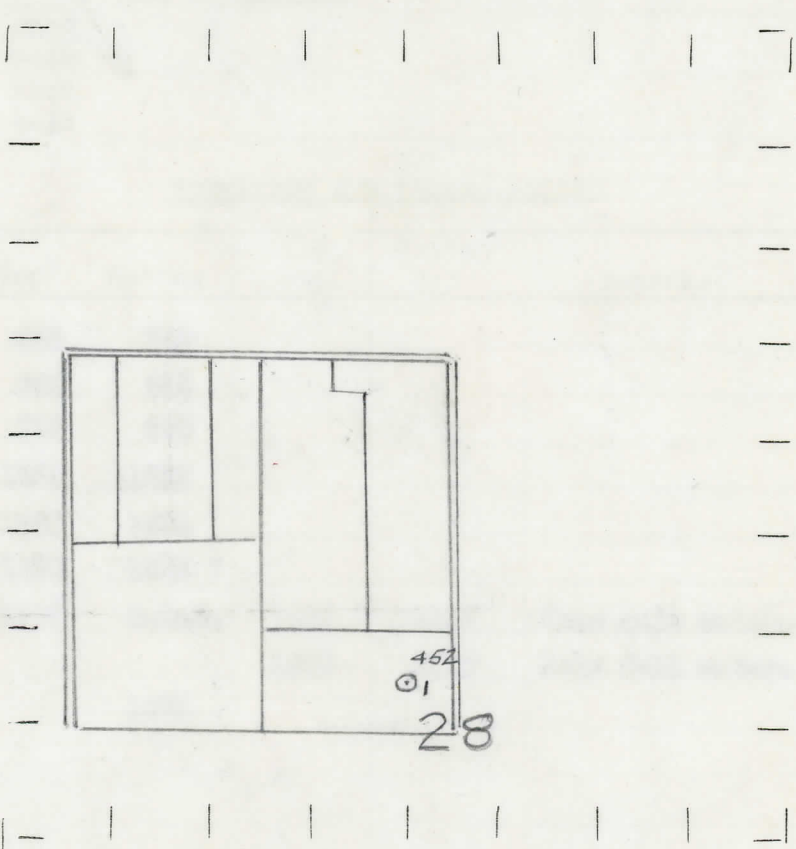
Feet from North Line of Farm
330 330 " " East " " "
330 330 " " South " " "
" " West " " "

Feet from North Line of Section
330 330 " " East " " 1/4"
330 330 " " South " " 1/4"
" " West " " "

LEGEND

- LOCATION
- ⊙ RIG
- ⊕ DRILLING
- ☀ GAS WELL
- OIL WELL
- ⦿ SMALL OIL WELL
- ⊖ DRY HOLE
- ⊕ DRY SHOWING OIL
- ☀ DRY SHOWING GAS
- ⊖ ABANDONED LOCATION
- ☀ ABANDONED GAS WELL
- ⦿ ABANDONED OIL WELL

NOTE: Below make tracing from map, (when no map is obtainable make sketch) showing farm, center of section, this location with measurements and also wells, dry holes, or other locations in the vicinity of this location.



REMARKS:

SIGNED *[Signature]*
Superintendent or Foreman

The Pure Oil Company
COMPLETION RECORD OF WELLS DRILLED BY OTHER OPERATORS

Michigan Producing Division

Date April 3, 1940 No. 452
 State Mich. County Kent ~~District~~ Walker Twp. Walker Sec. 28 Twp. 7 N Rge. 12 W
 (Serial No.)
 Well No. 1 (~~County No.~~) 452 Farm Minna Muth Acres _____
 Operator Wolverine Natural Gas Corp. Information secured ~~from~~ Scouting Department By _____
 Date well started 3-12-40 Dated well completed 3-26-40 Elevation 749.6

PRODUCTION RECORD

1st 24 hours natural Dry Hole
 2nd 24 hours natural _____
 Date of shot _____ No. of quarts _____ From _____ to _____ From _____ to _____
 Date of acid _____ No. of gallons _____
 shot _____
 1st 24 hours after acid _____
 shot _____
 2nd 24 hours after acid _____

FORMATION AND CASING RECORD

Formation	Top	Bottom	Top Pay	Bottom Pay	Remarks	Casing	
						Size	Set at
Marshall	252	342				10"	164
"	383	515				8-1/4"	535
Coldwater Lime	798	810					
Red Rock	1236	1252					
Berea	1256	1284					
Antrim	1730	1902 ?					
Traverse Lime	1935	S.L.M.	1937	1945	Show salt water.		
			1960	1975	Hole full water.		
Total Depth		1975					

Remarks 1930' C.T.M. equals 1937' S.L.M.

Signed D. G. Shackelford