



Western Michigan University
ScholarWorks at WMU

Legacy Scout Tickets from Pure Oil Company

8-20-2021

MGRRE_PureOilScoutTickets_Linkfield, A. L._1_21081074530000

MGRRE

Western Michigan University

Follow this and additional works at: <https://scholarworks.wmich.edu/pure>



Part of the Geology Commons

WMU ScholarWorks Citation

MGRRE, "MGRRE_PureOilScoutTickets_Linkfield, A. L._1_21081074530000" (2021). *Legacy Scout Tickets from Pure Oil Company*. 4332.

<https://scholarworks.wmich.edu/pure/4332>

This Document is brought to you for free and open access via ScholarWorks at WMU. It has been accepted for inclusion in Legacy Scout Tickets from Pure Oil Company by an authorized administrator of ScholarWorks at WMU. See the National Digital Catalogue - Science Base Catalogue for more collections submitted by MGRRE.



MGRRE_PureOilScoutTickets_Linkfield, A. L._1_21081074530000

API 21081074530000

Permit Number 7453

Lease Name Linkfield, A. L.

Well Number 1

County Kent

Township 07N

Range 10W

Section 8

2021 DEQ or Pure co_name American Drilling Company

Pure Number 454

Latitude 43.01186

Longitude -85.51481

THE PURE OIL COMPANY

454

DATE March 20, 1940

LOCATION REPORT

No.

STATE Michigan COUNTY Kent DIST Ada TWP Ada SEC 8 TOWN 7 N RANGE 10 W
WELL No. 1 (SERIAL No. 454) FARM A. L. Linkfield ACRES

NAME OF STREAM OR WATERS QUADRANGLE SW NE NE

OPERATOR American Drilling Company Map Ada Township, Kent County

330 330 Feet from North Line of Farm

990 990 " " East " " "

" " South " " "

" " West " " "

990 990 Feet from North Line of Section

990 990 " " East " " "

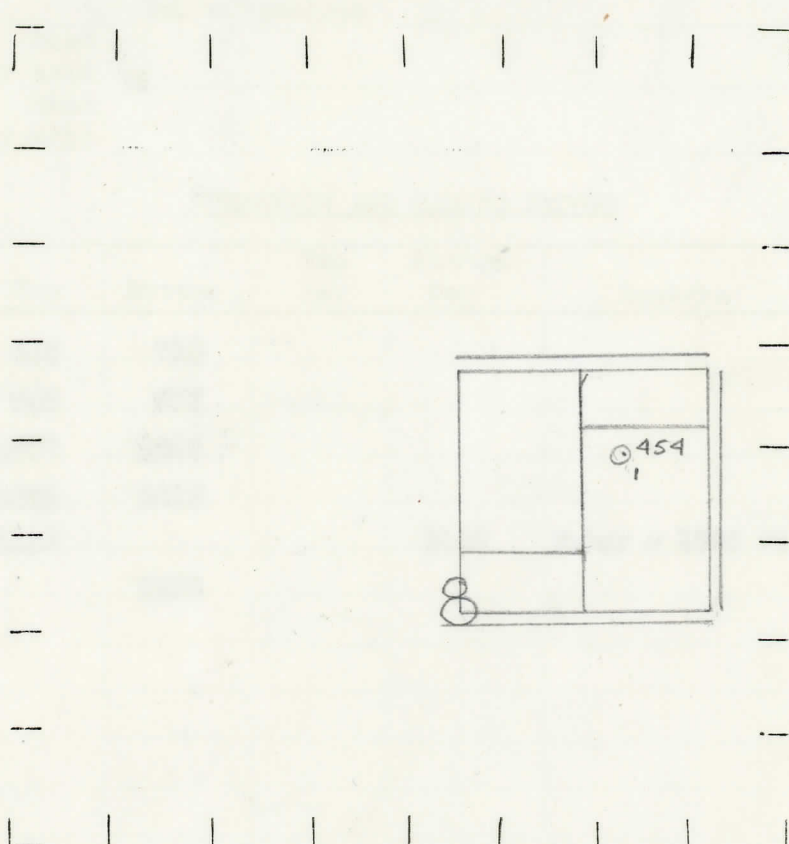
" " South " " "

" " West " " "

LEGEND

- LOCATION
- ⊕ RIG
- ⊕ DRILLING
- ☀ GAS WELL
- OIL WELL
- SMALL OIL WELL
- ⊖ DRY HOLE
- ◆ DRY SHOWING OIL
- ⊖ DRY SHOWING GAS
- ⊖ ABANDONED LOCATION
- ☀ ABANDONED GAS WELL
- ABANDONED OIL WELL

NOTE: Below make tracing from map, (when no map is obtainable make sketch) showing farm, center of section, this location with measurements and also wells, dry holes, or other locations in the vicinity of this location.



REMARKS:

SIGNED

SubIntendent or Foreman.

COMPLETION RECORD OF WELLS DRILLED BY OTHER OPERATORS

Michigan Producing Division

Date April 24, 1940 No. 454
 State Mich. County Kent Dist. Ada
 (Serial No.) Twp. Ada Sec. 8 Twp. 7 N Rge. 10 W
 Well No. 1 (County No.) 454 Farm A. L. Linkfield Acres
 Operator American Drilling Company Information secured from Scouting Department
 Date well started 3-19-40 Dated well completed 4-15-40 Elevation 686.3

PRODUCTION RECORD

1st 24 hours natural Dry Hole
 2nd 24 hours natural
 Date of shot No. of quarts From to From to
 Date of acid No. of gallons shot
 1st 24 hours after acid shot
 2nd 24 hours after acid shot

FORMATION AND CASING RECORD

| Formation | Top | Bottom | Top Pay | Bottom Pay | Remarks | Casing | |
|----------------|------|--------|---------|------------|------------------|--------|--------|
| | | | | | | Size | Set at |
| Marshall | 412 | 710 | | | | 10" | 250 |
| Coldwater Line | 963 | 975 | | | | 8-1/4" | 739 |
| Red Rock | 1517 | 1526 | | | | 6-5/8" | 2110 |
| Antrim | 1862 | 2076 | | | | | |
| Traverse Line | 2125 | | | 2140 | Water - 1000 ft. | | |
| Total Depth | | 2158 | | | | | |

Remarks

Signed D. C. Shackelford