



Western Michigan University
ScholarWorks at WMU

Legacy Scout Tickets from Pure Oil Company

8-20-2021

MGRRE_PureOilScoutTickets_Certain-Teed Products Corp_16_21081074790000

MGRRE

Western Michigan University

Follow this and additional works at: <https://scholarworks.wmich.edu/pure>



Part of the Geology Commons

WMU ScholarWorks Citation

MGRRE, "MGRRE_PureOilScoutTickets_Certain-Teed Products Corp_16_21081074790000" (2021). *Legacy Scout Tickets from Pure Oil Company*. 4337.
<https://scholarworks.wmich.edu/pure/4337>

This Document is brought to you for free and open access via ScholarWorks at WMU. It has been accepted for inclusion in Legacy Scout Tickets from Pure Oil Company by an authorized administrator of ScholarWorks at WMU. See the National Digital Catalogue - Science Base Catalogue for more collections submitted by MGRRE.



MGRRE_PureOilScoutTickets_Certain-Teed Products Corp_16_21081074790000

API 21081074790000

Permit Number 7479

Lease Name Certain-Teed Products Corp

Well Number 16

County Kent

Township 07N

Range 12W

Section 33

2021 DEQ or Pure co_name Goodale Enterprises LLC

Pure Number 459

Latitude 42.9457384

Longitude -85.7282347

THE PURE OIL COMPANY

DATE March 27, 1940

LOCATION REPORT

No. 459

STATE Michigan COUNTY Kent DIST. Walker TWP. Walker SEC. 33 TOWN 7 N RANGE 12 W

WELL No. 16 (SERIAL No. 459) FARM Certain-Teed Products Corp. ACRES

NAME OF STREAM OR WATERS _____ QUADRANGLE NE SE SE

OPERATOR John Meyer - B-27-48 Certain-Teed Products Corporation Map Walker Township, Kent County

1610 1610 Feet from North Line of Farm

" " East " " "

" " South " " "

740 740 " " West " " "

Feet from North Line of Section

405 405 " " East " 1/4 "

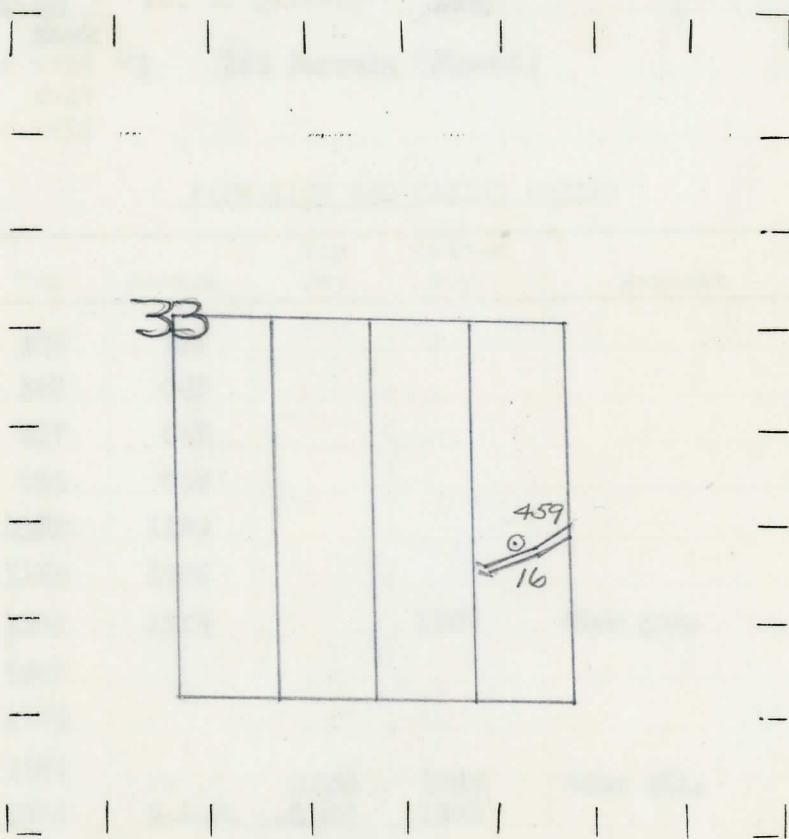
1110 1110 " " South " " "

" " West " " "

LEGEND

- LOCATION
- ⊕ RIG
- ⊕ DRILLING
- ☀ GAS WELL
- OIL WELL
- SMALL OIL WELL
- ⊙ DRY HOLE
- ◆ DRY SHOWING OIL
- ⊙ DRY SHOWING GAS
- ⊙ ABANDONED LOCATION
- ☀ ABANDONED GAS WELL
- ABANDONED OIL WELL

NOTE: Below make tracing from map. (when no map is obtainable make sketch) showing farm, center of section, this location with measurements and also wells, dry holes, or other locations in the vicinity of this location.



REMARKS:

SIGNED

W

Superintendent or Foreman.

COMPLETION RECORD OF WELLS DRILLED BY OTHER OPERATORS

Michigan Producing Division

Date May 1, 1940 No. 459
 State Mich. County Kent Dist. Walker Twp. 7 N Rge. 12 W
 Well No. 16 (Serial No.) 459 Farm Fee Acres _____
 Operator Certain-Seed Products Corp. Information secured ~~from~~ Scouting Department
 Date well started 4-3-40 Dated well completed 4-22-40 Elevation 724.7

PRODUCTION RECORD

1st 24 hours natural Filled up 1000 ft.
 2nd 24 hours natural _____
 Date of shot _____ No. of quarts _____ From _____ to _____ From _____ to _____
 Date of acid 4-23-40 No. of gallons 1000
 1st 24 hours after acid shot 125 Barrels (Flowed)
 2nd 24 hours after acid _____

FORMATION AND CASING RECORD

Formation	Top	Bottom	Top Pay	Bottom Pay	Remarks	Casing	
						Size	Set at
Marshall	206	315				14"	148
"	342	409				10"	200
"	417	465				8-1/4"	492
Coldwater Lime	755	775				6-5/8"	1839
Red Rock	1122	1124					
" "	1180	1203					
Berea	1203	1228		1208	Show gas.		
Antrim (Light)	1687						
Antrim (Dark)	1736						
Traverse Form.	1809		1880	1885	Show oil.		
Traverse Lime	1874	S.L.M.	1885	1898			
			1898	1915			
Total Depth		1921					

Remarks 1783' C.T.M. equals 1795' S.L.M.

Signed D. C. Shackelford