



Western Michigan University
ScholarWorks at WMU

Legacy Scout Tickets from Pure Oil Company

8-20-2021

MGRRE_PureOilScoutTickets_Certain-Teed Products Corp_19_21081076580000

MGRRE

Western Michigan University

Follow this and additional works at: <https://scholarworks.wmich.edu/pure>



Part of the Geology Commons

WMU ScholarWorks Citation

MGRRE, "MGRRE_PureOilScoutTickets_Certain-Teed Products Corp_19_21081076580000" (2021). *Legacy Scout Tickets from Pure Oil Company*. 4362.
<https://scholarworks.wmich.edu/pure/4362>

This Document is brought to you for free and open access via ScholarWorks at WMU. It has been accepted for inclusion in Legacy Scout Tickets from Pure Oil Company by an authorized administrator of ScholarWorks at WMU. See the National Digital Catalogue - Science Base Catalogue for more collections submitted by MGRRE.



MGRRE_PureOilScoutTickets_Certain-Teed Products Corp_19_21081076580000

API 21081076580000

Permit Number 7658

Lease Name Certain-Teed Products Corp

Well Number 19

County Kent

Township 07N

Range 12W

Section 34

2021 DEQ or Pure co_name Goodale Enterprises LLC

Pure Number 484

Latitude 42.9468736

Longitude -85.7249751

THE PURE OIL COMPANY

DATE May 15, 1940

LOCATION REPORT

No. 484

STATE Michigan COUNTY Kent DIST. Walker TWP. Walker SEC. 34 TOWN 7 N RANGE 12 W
WELL No. 199 (SERIAL No. 484) FARM Certainfeed Prod Corp ACRES

NAME OF STREAM OR WATERS _____ QUADRANGLE SW NW SW

OPERATOR John Meyer - 8-27-48 Certainfeed Products Corp. Map Walker Township, Kent County

1035 1035 Feet from North Line of Farm

840 840 " " East " " "

" " South " " "

" " West " " "

1035 1035 Feet from North Line of Section

" " East " " "

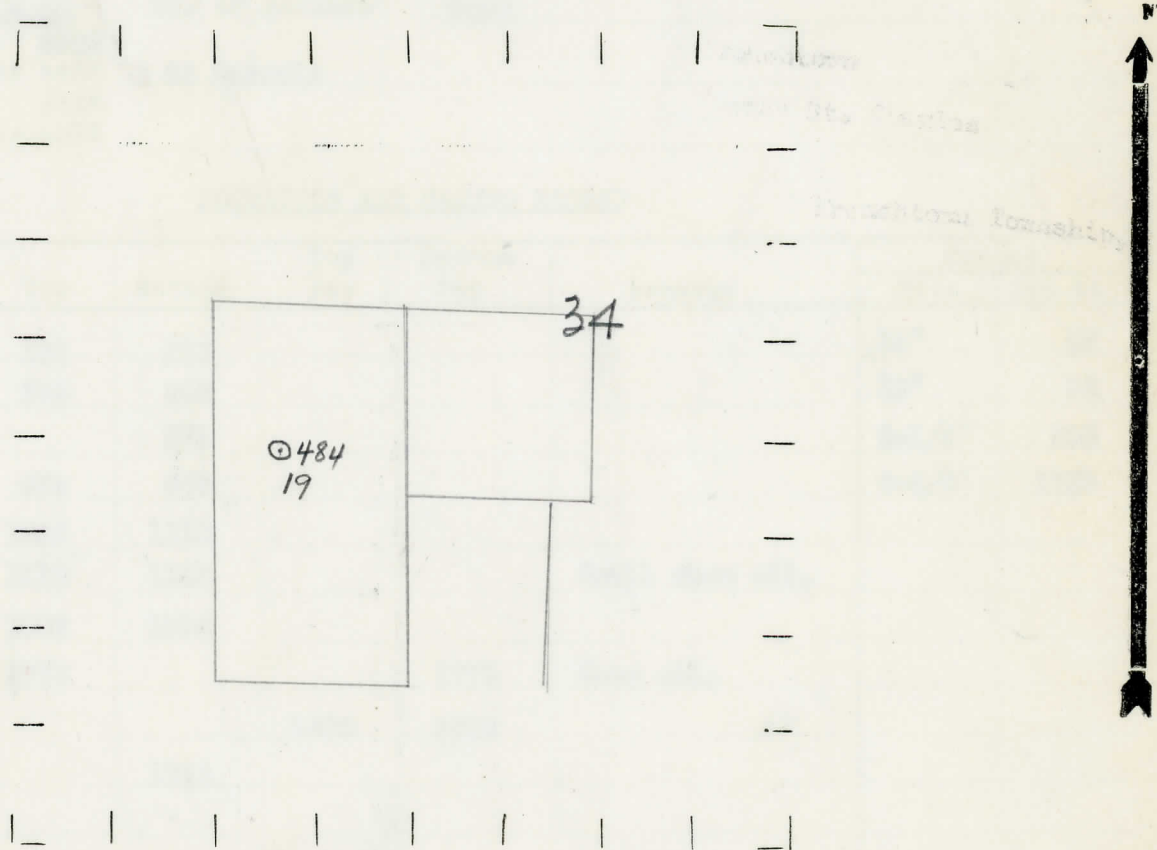
" " South " " "

480 480 " " West " " "

LEGEND

- LOCATION
- ⊕ RIG
- ⊕ DRILLING
- ☀ GAS WELL
- OIL WELL
- SMALL OIL WELL
- ⊙ DRY HOLE
- ◆ DRY SHOWING OIL
- ☀ DRY SHOWING GAS
- ⊙ ABANDONED LOCATION
- ☀ ABANDONED GAS WELL
- ABANDONED OIL WELL

NOTE: Below make tracing from map, (when no map is obtainable make sketch) showing farm, center of section, this location with measurements and also wells, dry holes, or other locations in the vicinity of this location.



REMARKS:

SIGNED W

Superintendent or Foreman.

Michigan Producing Division

Date June 19, 1940 No. 484
 State Mich. County Kent ~~Dist~~ Walker Twp. Walker Sec. 34 Twp. 7 N Rge. 12 W
 Well No. 19 (Serial No.) 484 Farm Fee Acres _____
 Operator Certain-Feed Products Corp. Information secured ~~from~~ Scouting Department
 Date well started 5-23-40 Dated well completed 6-11-40 Elevation 621.9

PRODUCTION RECORD

1st ¹²~~24~~ hours natural Filled up 500 ft.
 2nd 24 hours natural _____
 Date of shot _____ No. of quarts _____ From _____ to _____ From _____ to _____
 Date of acid 6-2-40 No. of gallons 1000
 1st ¹²~~24~~ hours after acid 46 Barrels shot
 2nd 24 hours after acid _____

FORMATION AND CASING RECORD

Formation	Top	Bottom	Top Pay	Bottom Pay	Remarks	Casing	
						Size	Set at
Marshall	103	215				14"	47
"	240	348				10"	95
"		371				8-1/4"	395
Coldwater Lime	655	675				6-5/8"	1733
Red Rock	1093	1110					
Berea	1110	1132			Small show oil.		
Antrim	1602	1714					
Traverse Lime	1775			1778	Show oil.		
			1808	1815			
Total Depth		1816					

Remarks 1607' C.T.M. equals 1614' S.L.M.

Signed D. C. Shackelford