



Western Michigan University  
ScholarWorks at WMU

---

Legacy Scout Tickets from Pure Oil Company

---

8-20-2021

**MGRRE\_PureOilScoutTickets\_Mason-  
Maynard\_1\_21081083590000**

MGRRE

*Western Michigan University*

Follow this and additional works at: <https://scholarworks.wmich.edu/pure>



Part of the Geology Commons

---

#### WMU ScholarWorks Citation

MGRRE, "MGRRE\_PureOilScoutTickets\_Mason-Maynard\_1\_21081083590000" (2021). *Legacy Scout Tickets from Pure Oil Company*. 4399.

<https://scholarworks.wmich.edu/pure/4399>

This Document is brought to you for free and open access via ScholarWorks at WMU. It has been accepted for inclusion in Legacy Scout Tickets from Pure Oil Company by an authorized administrator of ScholarWorks at WMU. See the National Digital Catalogue - Science Base Catalogue for more collections submitted by MGRRE.



---

**MGRRE\_PureOilScoutTickets\_Mason-Maynard\_1\_21081083590000**

API 21081083590000

Permit Number 8359

Lease Name Mason-Maynard

Well Number 1

County Kent

Township 06N

Range 12W

Section 4

2021 DEQ or Pure co\_name Goodale Enterprises LLC

Pure Number 521

Latitude 42.9387148

Longitude -85.7433962

DATE January 15, 1941

LOCATION REPORT

No. 521

COMPLETION RECORD OF WELLS DRILLED BY OTHER OPERATORS

STATE Michigan COUNTY Kent DIST. Walker TWP. Walker SEC. 4 TOWN 6 N RANGE 12 W  
WELL No. 1/ (SERIAL No. 521) FARM Mason-Maynard ACRES

NAME OF STREAM OR WATERS \_\_\_\_\_ QUADRANGLE NW SW NW

OPERATOR Mid-West Refineries, Inc. Map Walker Township, Kent County

134 134 Feet from North Line of Farm

“ “ East “ “ “

“ “ South “ “ “

250 250 “ “ West “ “ “

Feet from North Line of Section

“ “ East “ “ “

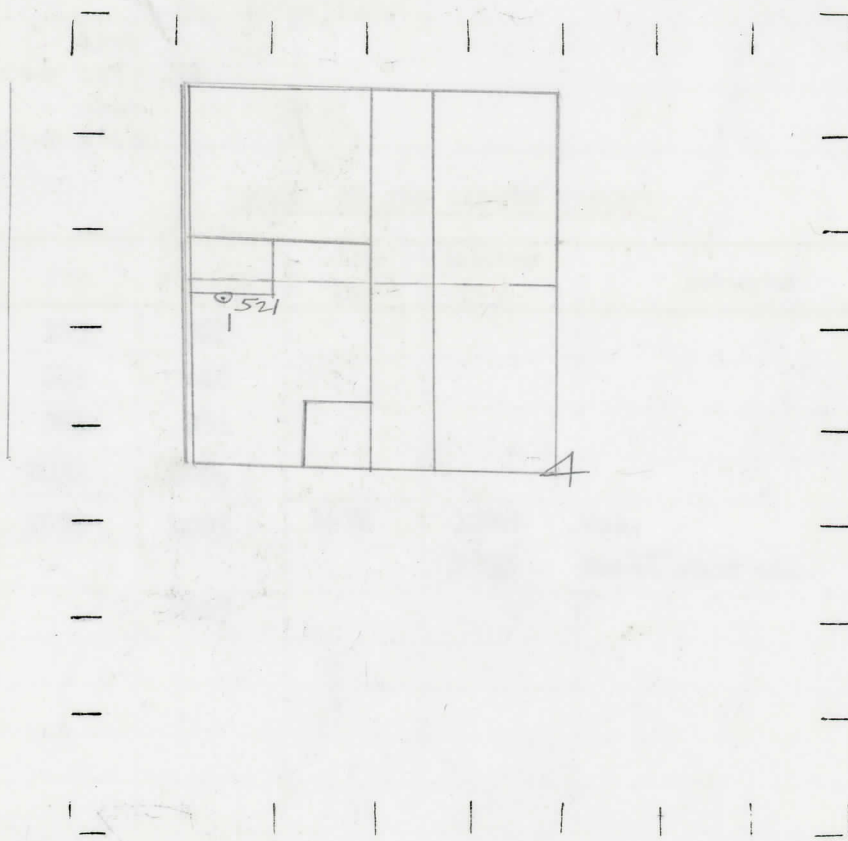
1119 1119 “ “ South 1/4/4 “

250 250 “ “ West “ “ “

*Lead*

- LEGEND**
- LOCATION
  - ⊕ RIG
  - ⊕ DRILLING
  - ☀ GAS WELL
  - OIL WELL
  - SMALL OIL WELL
  - ⊙ DRY HOLE
  - DRY SHOWING OIL
  - ⊙ DRY SHOWING GAS
  - ⊙ ABANDONED LOCATION
  - ☀ ABANDONED GAS WELL
  - ABANDONED OIL WELL

NOTE: Below make tracing from map, (when no map is obtainable make sketch) showing farm, center of section, this location with measurements and also wells, dry holes, or other locations in the vicinity of this location.



REMARKS:

\_\_\_\_\_  
\_\_\_\_\_  
\_\_\_\_\_

SIGNED

*w*

Superintendent or Foreman.

Date **March 5, 1941** No. **521**  
 State **Mich.** County **Kent** ~~Dist.~~ Twp. **Walker** Sec. **4** Twp. **6 N** Rge. **12 W**  
 Well No. **1** (Serial No.) ~~XXXXXX~~ (County No.) **521** Farm **Mason-Maynard** Acres \_\_\_\_\_  
 Operator **Mid-West Refineries, Inc.** Information secured ~~from~~ **By** **Scouting Department**  
 Date well started **2-13-41** Date well completed **3-2-41** Elevation **609.5**

PRODUCTION RECORD

1st 24 hours natural **3,140,000 Cu. Ft.**  
 2nd 24 hours natural \_\_\_\_\_  
 Date of shot \_\_\_\_\_ No. of quarts \_\_\_\_\_ From \_\_\_\_\_ to \_\_\_\_\_ From \_\_\_\_\_ to \_\_\_\_\_  
 Date of acid \_\_\_\_\_ No. of gallons \_\_\_\_\_  
 1st 24 hours after acid \_\_\_\_\_ shot \_\_\_\_\_  
 2nd 24 hours after acid \_\_\_\_\_ shot \_\_\_\_\_

FORMATION AND CASING RECORD

Formation	Top	Bottom	Top Pay	Bottom Pay	Remarks	Casing	
						Size	Set at
Marshall	105	386				10"	66
Coldwater Lime	615	640				8-1/4"	395
Red Rock	985	986				6-5/8"	1064
" "	1051	1064					
Berea	1072	1085	1074	1080 1085	Gas. Small show oil.		
Total Depth		1085					

Remarks \_\_\_\_\_  
 \_\_\_\_\_  
 \_\_\_\_\_

Signed **D. C. Shackelford**