



Western Michigan University
ScholarWorks at WMU

Legacy Scout Tickets from Pure Oil Company

8-20-2021

**MGRRE_PureOilScoutTickets_Gould,
Seymour_1_21081085590000**

MGRRE
Western Michigan University

Follow this and additional works at: <https://scholarworks.wmich.edu/pure>



Part of the Geology Commons

WMU ScholarWorks Citation

MGRRE, "MGRRE_PureOilScoutTickets_Gould, Seymour_1_21081085590000" (2021). *Legacy Scout Tickets from Pure Oil Company*. 4408.
<https://scholarworks.wmich.edu/pure/4408>

This Document is brought to you for free and open access via ScholarWorks at WMU. It has been accepted for inclusion in Legacy Scout Tickets from Pure Oil Company by an authorized administrator of ScholarWorks at WMU. See the National Digital Catalogue - Science Base Catalogue for more collections submitted by MGRRE.



MGRRE_PureOilScoutTickets_Gould, Seymour_1_21081085590000

API 21081085590000

Permit Number 8559

Lease Name Gould, Seymour

Well Number 1

County Kent

Township 05N

Range 12W

Section 20

2021 DEQ or Pure co_name Southwest Development Company

Pure Number 530

Latitude 42.80746

Longitude -85.74909

DATE April 23, 1941

LOCATION REPORT

No.

COMPLETION RECORD OF WELLS DRILLED BY OTHER OPERATORS

STATE Michigan COUNTY Kent TWP Byron SEC 20 TOWN 5 N RANGE 13 W
WELL No. 1 (SERIAL No. 530) FARM Seymour Gould Gould ACRES

NAME OF STREAM OR WATERS QUADRANGLE NE SW NE

OPERATOR Southwest Development Company Map Byron Township, Kent County
Southwest Dev. Co Byron - Kent

Feet from North Line of Farm

330 330 " " East " " "
330 330 " " South " " "
" " West " " "

Low

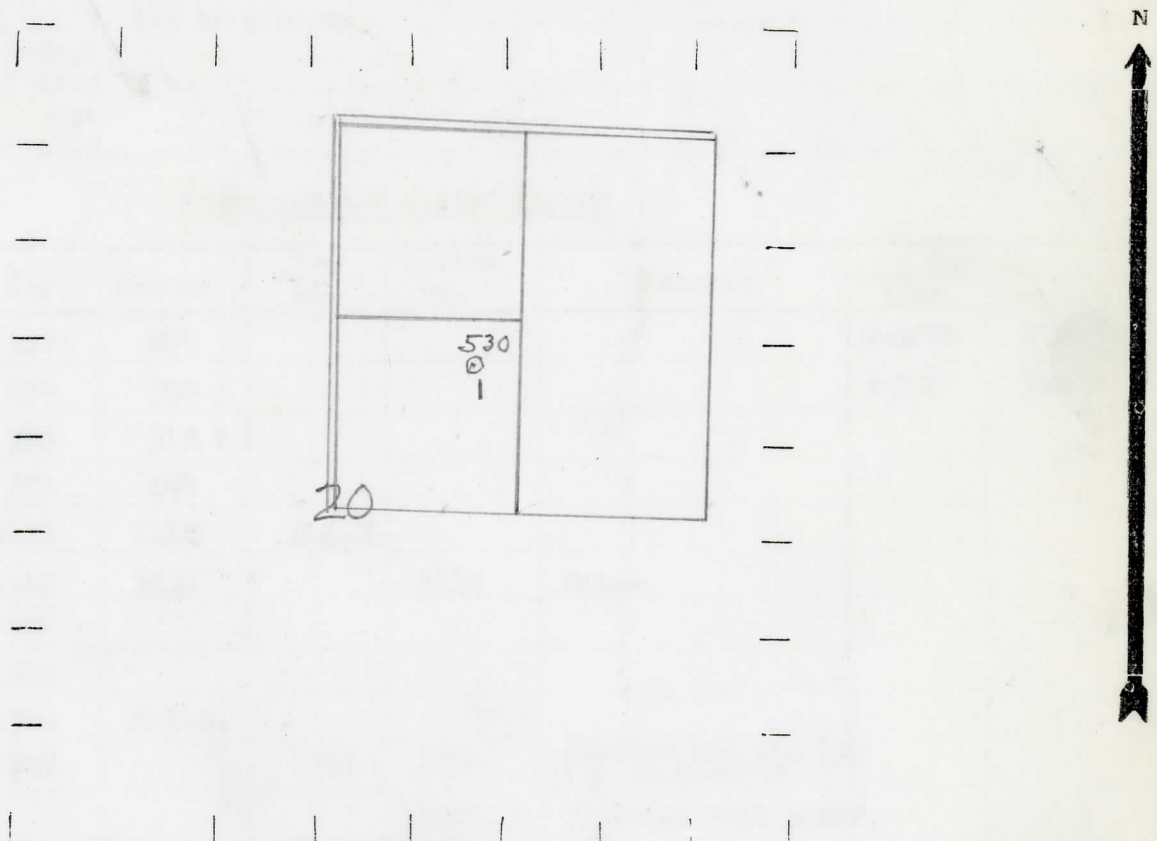
Feet from North Line of Section

990 990 " " East " " "
990 990 " " South " 1/4 "
990 990 " " West " " "

LEGEND

- LOCATION
- ⊙ RIG
- ⊕ DRILLING
- ☀ GAS WELL
- OIL WELL
- SMALL OIL WELL
- ⊙ DRY HOLE
- DRY SHOWING OIL
- ☀ DRY SHOWING GAS
- ⊙ ABANDONED LOCATION
- ☀ ABANDONED GAS WELL
- ABANDONED OIL WELL

NOTE: Below make tracing from map, (when no map is obtainable make sketch) showing farm, center of section, this location with measurements and also wells, dry holes, or other locations in the vicinity of this location.



REMARKS:

.....
.....
.....

SIGNED

W

Superintendent or Foreman.

Date June 4, 1941 No. 530
 State Mich. County Kent Twp. Byron Sec. 20 Twp. 5 N Rge. 12 W
 Well No. 1 (Serial No.)
 (County No.) 530 Farm Seymour Gould Acres
 Operator Southwest Development Co. Information secured By Scouting Department
 Date well started 5-1-41 Date well completed 5-30-41 Elevation 754.0

PRODUCTION RECORD

1st 24 hours natural Dry Hole
 2nd 24 hours natural
 Date of shot No. of quarts From to From to
 Date of acid No. of gallons
 shot
 1st 24 hours after acid shot
 2nd 24 hours after acid shot

FORMATION AND CASING RECORD

Formation	Top	Bottom	Top Pay	Bottom Pay	Remarks	Casing	
						Size	Set at
Marshall	137	275				8-5/8"	135
"	295	300				6-5/8"	340
"	310	318 ?					
Coldwater Lime	671	680					
Red Rock	1102	1112	S.L.M.				
Berea	1112	1134		1112	Water.		
Antrim (light)	1480						
Antrim (dark)	1600						
Traverse Form.	1724	S.L.M.					
Traverse Lime	1787		1795	1796	Rainbow oil and 150 ft. salt water.		
				1804	Increase salt water.		
Total Depth		1804					

Remarks 1750' C.T.M. equals 1752' S.L.M.

Signed D. C. Shackelford