



Western Michigan University  
ScholarWorks at WMU

---

Legacy Scout Tickets from Pure Oil Company

---

8-20-2021

**MGRRE\_PureOilScoutTickets\_Shilton, Ethel\_1\_21081089850000**

MGRRE

*Western Michigan University*

Follow this and additional works at: <https://scholarworks.wmich.edu/pure>



Part of the Geology Commons

---

#### **WMU ScholarWorks Citation**

MGRRE, "MGRRE\_PureOilScoutTickets\_Shilton, Ethel\_1\_21081089850000" (2021). *Legacy Scout Tickets from Pure Oil Company*. 4419.

<https://scholarworks.wmich.edu/pure/4419>

This Document is brought to you for free and open access via ScholarWorks at WMU. It has been accepted for inclusion in Legacy Scout Tickets from Pure Oil Company by an authorized administrator of ScholarWorks at WMU. See the National Digital Catalogue - Science Base Catalogue for more collections submitted by MGRRE.



---

**MGRRE\_PureOilScoutTickets\_Shilton, Ethel\_1\_21081089850000**

API 21081089850000

Permit Number 8985

Lease Name Shilton, Ethel

Well Number 1

County Kent

Township 06N

Range 10W

Section 13

2021 DEQ or Pure co\_name Jetter, C B and DeKraaft

Pure Number 541

Latitude 42.91322

Longitude -85.44937

DATE September 24, 1941

LOCATION REPORT

No. 541

STATE Michigan

COMPLETION RECORD OF WELLS DRILLED BY OTHER OPERATORS

COUNTY Kent

TWP. Cascade

SEC. 13

TOWN 6N

RANGE 10W

WELL No. 1

(SERIAL No. 541) FARM

Ethel Shilton

ACRES

NAME OF STREAM OR WATERS

QUADRANGLE NW NW NW

OPERATOR Jetter and deKrafft

Map Cascade Township, Kent County

330 330 Feet from North Line of Farm

Jetter + de Krafft

Cascade - Kent

" " East " " "

" " South " " "

330 330 " " West " " "

330 330 Feet from North Line of Section 1/4 1/4

" " East " " "

" " South " " "

330 330 " " West " " "

LEGEND

○ LOCATION

⊕ RIG

⊕ DRILLING

☀ GAS WELL

● OIL WELL

● SMALL OIL WELL

⊙ DRY HOLE

● DRY SHOWING OIL

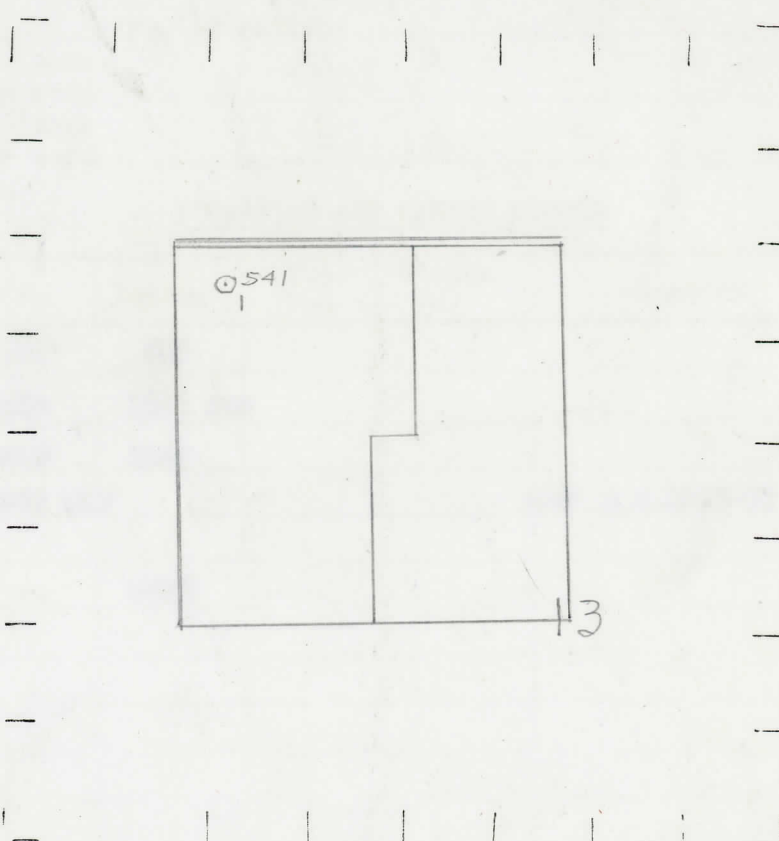
⊙ DRY SHOWING GAS

⊙ ABANDONED LOCATION

☀ ABANDONED GAS WELL

● ABANDONED OIL WELL

NOTE: Below make tracing from map. (when no map is obtainable make sketch) showing farm, center of section, this location with measurements and also wells, dry holes, or other locations in the vicinity of this location.



REMARKS:

.....  
.....  
.....

SIGNED

W  
Superintendent or Foreman.

g

DATE 10-29-41 THE PURE OIL COMPANY

DATE 10-29-41 ESTD LOCATION REPORT

RECORD No. 541

NOTE: Keep from north line of E.S.L.M.

OBSERVER Jetter and deKrafft Cascade Township Kent County

NAME OF STRIUM OR WELLS QUADRENGLE

Date October 29, 1941 No. 541

State Mich. County Kent Dist. Twp. Cascade Sec. 13 Twp. 6 N Rge. 10 W

Well No. 1 (Serial No.) (County No.) 541 Farm Ethel Shilton Acres

Operator Jetter & deKrafft Information secured from Scouting Dept.

Date well started 10-5-41 Date well completed 10-26-41 Elevation 759.9

PRODUCTION RECORD

1st 24 hours natural Dry Hole

2nd 24 hours natural

Date of shot No. of quarts From to From to

Date of acid No. of gallons

1st 24 hours after acid shot

2nd 24 hours after acid shot

FORMATION AND CASING RECORD

Formation	Top	Bottom	Top Pay	Bottom Pay	Remarks	Casing	
						Size	Set at
Marshall	325	585				10"	183
Goldwater Red	R.1508	1523 SLM				8-1/4"	700
Antrim	1840	2022				6-5/8"	2022
Traverse Line	2082 SLM				600' S.W.2088-90		
Total Depth		2093					

Remarks 1468 CTM equals 79 SLM 2082 CTM equals 82 SLM

Signed DBanC. Shackelford