



Western Michigan University
ScholarWorks at WMU

Legacy Scout Tickets from Pure Oil Company

8-20-2021

MGRRE_PureOilScoutTickets_Barnes, J._1_21081051050000

MGRRE

Western Michigan University

Follow this and additional works at: <https://scholarworks.wmich.edu/pure>



Part of the Geology Commons

WMU ScholarWorks Citation

MGRRE, "MGRRE_PureOilScoutTickets_Barnes, J._1_21081051050000" (2021). *Legacy Scout Tickets from Pure Oil Company*. 4434.

<https://scholarworks.wmich.edu/pure/4434>

This Document is brought to you for free and open access via ScholarWorks at WMU. It has been accepted for inclusion in Legacy Scout Tickets from Pure Oil Company by an authorized administrator of ScholarWorks at WMU. See the National Digital Catalogue - Science Base Catalogue for more collections submitted by MGRRE.



MGRRE_PureOilScoutTickets_Barnes, J._1_21081051050000

API 21081051050000

Permit Number 5105

Lease Name Barnes, J.

Well Number 1

County Kent

Township 05N

Range 09W

Section 32

2021 DEQ or Pure co_name Three A Drilling Company

Pure Number 556

Latitude 42.77093

Longitude -85.40553

THE PURE OIL COMPANY
LOCATION REPORT

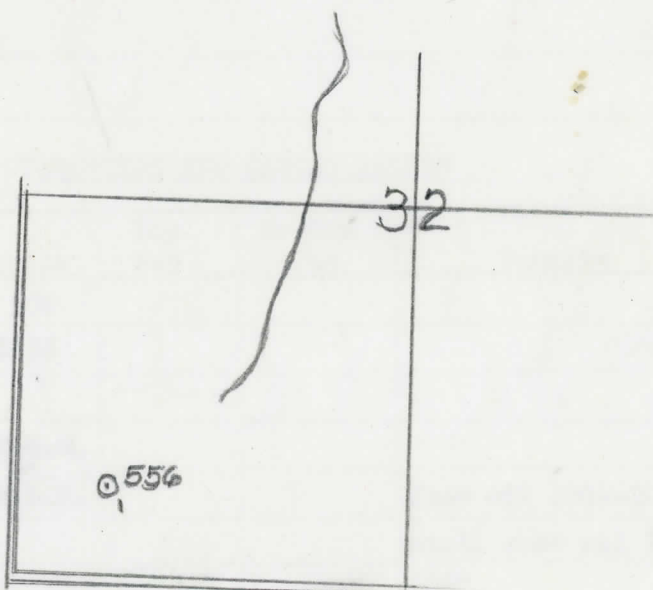
Date May 19, 1943 A.F.E. No. _____
 Division Mich. Producing District _____ Lease J. Barnes
 Acres _____ Lease No. _____ Elevation _____ Well No. 1 (Serial No. 556)
 Quadrangle C SW SW Sec. 32 Twp. 5 N Rge. 9 W Twp. Bowne
 Survey _____ County Kent State Michigan
 Operator Three A Drilling Co. Map Bowne Twp - Kent Co.

		Feet from North Line of Lease	
		" "	East " " "
<u>660</u>	<u>660</u>	" "	South " " "
<u>660</u>	<u>660</u>	" "	West " " "
		Feet from North Line of Section	
		" "	East " " "
<u>660</u>	<u>660</u>	" "	South " <u>1/4</u> "
<u>660</u>	<u>660</u>	" "	West " " "

RN

LEGEND

- Location
- ☉ Gas Well
- Oil Well
- ☉ Gas - Distillate Well
- ⊘ or ○ Dry Hole
- or ○ Dry Showing Oil
- ☉ Dry Showing Gas
- ⊘ Abandoned Location
- ☉ or ☉ Abandoned Gas Well
- or ● Abandoned Oil Well
- or ○ Input Well



Scale _____

Remarks: _____

Submitted by RN Civil Engineer Approved by _____ Division Manager
 Approved by _____ Vice-President - General Manager

COMPLETION RECORD OF WELLS DRILLED BY OTHER OPERATORS

Michigan Producing Division

Date July 14, 1943 No. 556
 State Mich. County Kent District Bowne Twp. 5 N Sec. 32 Rge. 9 W
 (Serial No.)
 Well No. 1 (County No.) 556 Farm J. Barnes Acres _____
 Operator Three A Drilling Company Information secured From Scouting Department By _____
 Date well started 5-18-43 Date well completed 7-12-43 Elevation 828.1

PRODUCTION RECORD
Dry Hole

1st 24 hours natural _____
 2nd 24 hours natural _____
 Date of shot _____ No. of quarts _____ From _____ to _____ From _____ to _____
 Date of acid _____ No. of gallons _____
 shot
 1st 24 hours after acid _____
 shot
 2nd 24 hours after acid _____

FORMATION AND CASING RECORD

Formation	Top	Bottom	Top Pay	Bottom Pay	Remarks	Casing	
						Size	Set at
Marshall	285	570				10"	275
Coldw. Red Rock	1425	1455				8-1/4"	580
Berea	1480						
Traverse Form.	1920	S.O.M.					
Traverse Lime	1995	S.L.M.			Show oil 1999-2001. Small show oil 2040-2050. Hole full water from 2110-2115.		
Total Depth		2115					

Remarks 1994' CTM equals 1999' SLM; 1436' CTM equals 1425' SLM.

Signed D. C. Shackelford