



Western Michigan University
ScholarWorks at WMU

Legacy Scout Tickets from Pure Oil Company

8-20-2021

MGRRE_PureOilScoutTickets_Brown, F S_1_21081101740000

MGRRE

Western Michigan University

Follow this and additional works at: <https://scholarworks.wmich.edu/pure>



Part of the Geology Commons

WMU ScholarWorks Citation

MGRRE, "MGRRE_PureOilScoutTickets_Brown, F S_1_21081101740000" (2021). *Legacy Scout Tickets from Pure Oil Company*. 4435.

<https://scholarworks.wmich.edu/pure/4435>

This Document is brought to you for free and open access via ScholarWorks at WMU. It has been accepted for inclusion in Legacy Scout Tickets from Pure Oil Company by an authorized administrator of ScholarWorks at WMU. See the National Digital Catalogue - Science Base Catalogue for more collections submitted by MGRRE.



MGRRE_PureOilScoutTickets_Brown, F S_1_21081101740000

API 21081101740000

Permit Number 10174

Lease Name Brown, F S

Well Number 1

County Kent

Township 05N

Range 11W

Section 27

2021 DEQ or Pure co_name Smith Petroleum Company

Pure Number 557

Latitude 42.7874

Longitude -85.59615

THE PURE OIL COMPANY

LOCATION REPORT

Date June 23, 1943 A.F.E. No. _____

Division Michigan Producing District _____ Lease F. S. Brown

Acres _____ Lease No. _____ Elevation _____ Well No. 1 (Serial No. 557)

Quadrangle SE NE SW Sec. 27 Twp. 5 N Rge. 11 W Twp. Gaines

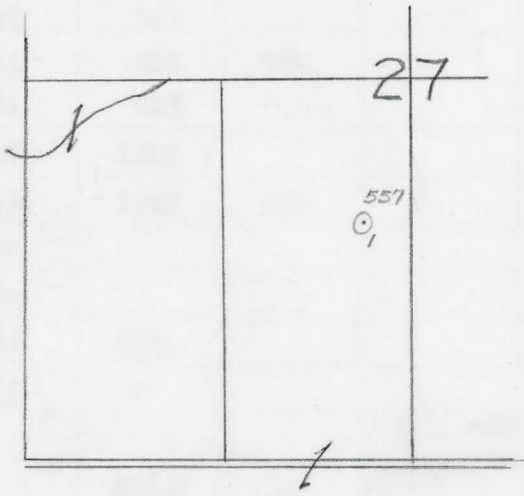
Survey _____ County Kent State Michigan

Operator Smith Petroleum Co Map Gaines Twp - Kent Co.
Smith Petroleum Company Gaines Township, Kent County

<u>990</u>	<u>990</u>	Feet from North Line of Lease
<u>330</u>	<u>330</u>	" " East " " "
		" " South " " "
		" " West " <u>1/4</u> "
<u>990</u>	<u>990</u>	Feet from North Line of Section
<u>330</u>	<u>330</u>	" " East " <u>1/4</u> "
		" " South " " "
		" " West " " "

LEGEND

- Location
- ☀ Gas Well
- Oil Well
- ☀ Gas - Distillate Well
- ⊘ or ○ Dry Hole
- Dry Showing Oil
- ☀ Dry Showing Gas
- ⊘ Abandoned Location
- ☀ or ⊘ Abandoned Gas Well
- or ● Abandoned Oil Well
- ⊘ or ⊘ Input Well



Scale _____

Remarks: _____

Submitted by _____ Civil Engineer Approved by _____ Division Manager

Approved by _____ Vice-President - General Manager

COMPLETION RECORD OF WELLS DRILLED BY OTHER OPERATORS

Michigan Producing Division

Date July 21, 1943 No. 557
 State Mich. County Kent Twp. ~~Dissex~~ Gaines Sec. 27 Twp. 5 N Rge. 11 W
 Well No. 1 (Serial No.) 557 Farm F. S. Brown Acres
 Operator Smith Petroleum Company Information secured by ~~Coon~~ Scouting Department
 Date well started 6-23-43 Date well completed 7-15-43 Elevation 854.8

PRODUCTION RECORD

Dry Hole

1st 24 hours natural
 2nd 24 hours natural
 Date of shot No. of quarts From to From to
 Date of acid No. of gallons
 1st 24 hours after acid shot
 2nd 24 hours after acid shot

FORMATION AND CASING RECORD

Formation	Top	Bottom	Top Pay	Bottom Pay	Remarks	Casing	
						Size	Set at
Marshall	240	367				10"	285
"	415	515	SLM.			8-1/4"	531
Coldwater Line	814	819					
Coldw. Red Rock	1208	1210					
" " "	1315	1328	SLM.				
Antrim (light)	1600						
Antrim (dark)	1680						
Traverse Form.	1895	SLM.					
Traverse Line	1966	"			Water (1-1/3 ba. in 3 hrs.) at 1992.		
Total Depth		2012					

Remarks 1372' CTM equals 1385' SLM; 520 CTM equals 531' SLM; 1825' CTM equals 1833' SLM.

Signed D. C. Shackelford