



Western Michigan University
ScholarWorks at WMU

Legacy Scout Tickets from Pure Oil Company

8-20-2021

MGRRE_PureOilScoutTickets_Alles, Clifford_1_21081105960000

MGRRE

Western Michigan University

Follow this and additional works at: <https://scholarworks.wmich.edu/pure>



Part of the Geology Commons

WMU ScholarWorks Citation

MGRRE, "MGRRE_PureOilScoutTickets_Alles, Clifford_1_21081105960000" (2021). *Legacy Scout Tickets from Pure Oil Company*. 4440.

<https://scholarworks.wmich.edu/pure/4440>

This Document is brought to you for free and open access via ScholarWorks at WMU. It has been accepted for inclusion in Legacy Scout Tickets from Pure Oil Company by an authorized administrator of ScholarWorks at WMU. See the National Digital Catalogue - Science Base Catalogue for more collections submitted by MGRRE.



MGRRE_PureOilScoutTickets_Alles, Clifford_1_21081105960000

API 21081105960000

Permit Number 10596

Lease Name Alles, Clifford

Well Number 1

County Kent

Township 08N

Range 11W

Section 12

2021 DEQ or Pure co_name McCall, S. L

Pure Number 568

Latitude 43.09056

Longitude -85.56911

THE PURE OIL COMPANY
LOCATION REPORT

Date January 19, 1944 A.F.E. No. _____

Division Mich. Producing District _____ Lease Clifford Alles

Acres _____ Lease No. _____ Elevation _____ Well No. 1 (Serial No. 568)

Quadrangle SW NW SW Sec. 12 Twp. 8 N Rge. 11 W ~~Dist~~ Plainfield

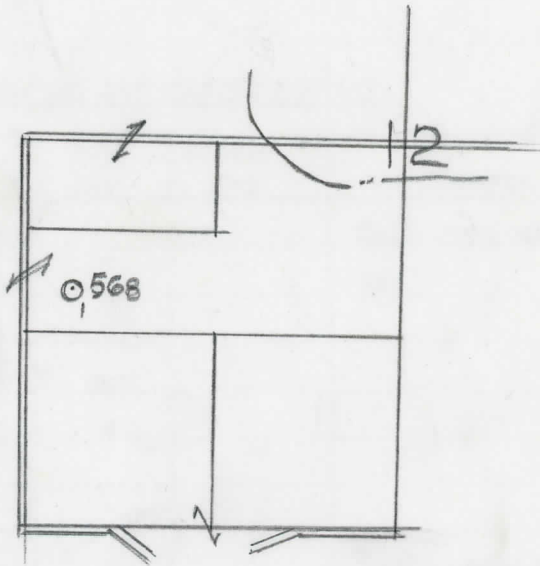
Survey _____ County Kent M State Michigan

Operator S. L. McCall Map Plainfield Township, Kent County

_____	_____	Feet from North Line of Lease
_____	_____	“ “ East “ “ “
_____	_____	“ “ South “ “ “
<u>330</u>	<u>330</u>	“ “ West “ <u>1/4</u> “
<u>990</u>	<u>990</u>	Feet from North Line of Section
_____	_____	“ “ East “ “ “
_____	_____	“ “ South “ “ “
<u>330</u>	<u>330</u>	“ “ West “ “ “

LEGEND

- Location
- ☉ Gas Well
- Oil Well
- ☉ Gas - Distillate Well
- or ○ Dry Hole
- or ● Dry Showing Oil
- ☉ Dry Showing Gas
- ⊗ Abandoned Location
- ☉ or ☉ Abandoned Gas Well
- or ● Abandoned Oil Well
- ⊗ or ⊗ Input Well



Remarks: _____

Scale _____

Submitted by RN _____ Civil Engineer Approved by _____ Division Manager

Approved by _____ Vice-President - General Manager

Michigan Producing Division

Date February 23, 1944 No. 568
 State Mich. County Kent District Plainfield Sec. 12 Twp. 8 N Rge. 11 W
 (Serial No.)
 Well No. 1 (County No.) 568 Farm Clifford Alles Acres _____
 Operator S. L. McCall By Scouting Department
 Information secured from _____
 Date well started 1-22-44 Date well completed 2-17-44 Elevation 811.5

PRODUCTION BOARD

1st 24 hours natural Dry Hole
 2nd 24 hours natural _____
 Date of shot _____ No. of quarts _____ From _____ to _____ From _____ to _____
 Date of acid _____ No. of gallons _____
 shot _____
 1st 24 hours after acid _____
 shot _____
 2nd 24 hours after acid _____

FORMATION AND CASING RECORD

Formation	Top	Bottom	Top Pay	Bottom Pay	Remarks	Casing	
						Size	Set at
Marshall	580	615			Hole full water	10"	369
"	620	650			585.	6-5/8"	895
"	663	854				5-3/16"	2279 R
Coldwater Lime	1115	1140					
Coldw. Red Rock	1662	1683	SOM.				
Berea	1683	1730	"				
Antrim	2022						
Traverse Form.	2254						
Traverse Lime	2307	SLM.			Small show oil 2311.		
					Small show oil 2323 to 2332.		
					Water (2 ba. per hr.) 2332-2338.		
Total Depth		2345					

Remarks 2308' CTM equals 2307' SLM.

Signed D. C. Shackelford