



Western Michigan University
ScholarWorks at WMU

Legacy Scout Tickets from Pure Oil Company

8-20-2021

MGRRE_PureOilScoutTickets_Rector, Frank_1_21081110660000

MGRRE

Western Michigan University

Follow this and additional works at: <https://scholarworks.wmich.edu/pure>



Part of the Geology Commons

WMU ScholarWorks Citation

MGRRE, "MGRRE_PureOilScoutTickets_Rector, Frank_1_21081110660000" (2021). *Legacy Scout Tickets from Pure Oil Company*. 4445.

<https://scholarworks.wmich.edu/pure/4445>

This Document is brought to you for free and open access via ScholarWorks at WMU. It has been accepted for inclusion in Legacy Scout Tickets from Pure Oil Company by an authorized administrator of ScholarWorks at WMU. See the National Digital Catalogue - Science Base Catalogue for more collections submitted by MGRRE.



MGRRE_PureOilScoutTickets_Rector, Frank_1_21081110660000

API 21081110660000

Permit Number 11066

Lease Name Rector, Frank

Well Number 1

County Kent

Township 09N

Range 11W

Section 24

2021 DEQ or Pure co_name McCall, S. L

Pure Number 573

Latitude 43.14918

Longitude -85.55205

THE PURE OIL COMPANY

LOCATION REPORT

Date September 20, 1944

A.F.E. No. _____

Division Mich. Producing District _____

Lease Frank Rector
Frank Rector

Acres _____ Lease No. _____ Elevation _____ Well No. 1 (Serial No. 573)

Quadrangle NE-SE-SE Sec. 24 Twp. 9N Rge. 11W ~~Dist~~ Algoma ~~Twp.~~ Algoma

Survey _____ County Kent State Michigan

Operator S. L. McCall Map Algoma Twp - Kent Co.

355 355 Feet from North Line of Lease

_____ " " East " " "

_____ " " South " " "

_____ " " West " " "

_____ Feet from North Line of Section

355 355 " " East " 1/4 "

965 965 " " South " " "

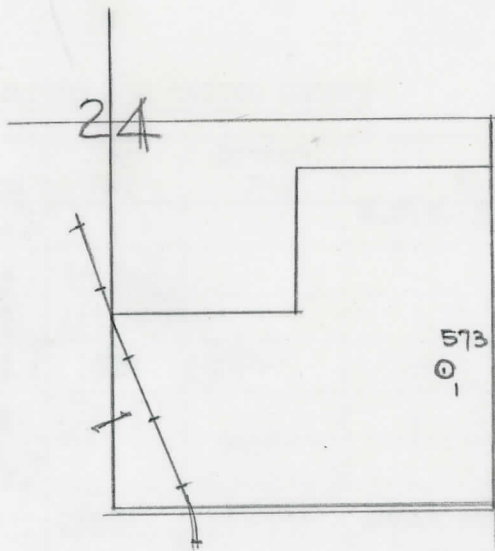
_____ " " West " " "

LEGEND

○ Location

- ☀ Gas Well
- Oil Well
- ☀ Gas-Distillate Well
- ∅ or ○ Dry Hole
- Dry Showing Oil
- ☀ Dry Showing Gas
- ⊗ Abandoned Location
- ☀ or ☀ Abandoned Gas Well
- or ● Abandoned Oil Well
- or ○ Input Well

map



Scale _____

Remarks: _____

Submitted by ZN Civil Engineer Approved by _____ Division Manager

Approved by _____ Vice-President - General Manager

Michigan Producing Division

Date November 22, 1944 No. 573
 State Mich. County Kent District Algoma
 (Serial No.) Twp. 24 Sec. 9 N Rge. 11 W
 Well No. 1 (County No.) 573 Farm Frank Rector Acres
 Operator S. L. McCall Information secured Scouting Department
 Date well started 10-11-44 Date well completed 11-20-44 Elevation 749.4

PRODUCTION BOARD

1st 24 hours natural Dry Hole
 2nd 24 hours natural
 Date of shot No. of quarts From To From to
 Date of acid shot No. of gallons
 1st 24 hours after acid shot
 2nd 24 hours after acid shot

FORMATION AND CASING RECORD

Formation	Top	Bottom	Top Pay	Bottom Pay	Remarks	Casing	
						Size	Set at
Brown Dolomite	547	(+202)			H.F.W. 305-330.	10"	284
Mich. Stray	569	585	(+180)		(+444)	8-1/4"	818
Marshall	595	807	(+154)				
Coldw. Red Rock	1605	1613	CTM	(-856)			
Sunbury	1618	1623	(-869)				
Traverse Form.	2195	(+446)					
Traverse Lime	2239	SLM	(+490)		Small show oil and gas 2240 SLM. (-1491)		
					H.F.S.W. 2246-55 SLM.		
Total Depth		2296	SLM	(-1547)	(-1497)		

Remarks 2300' CTM equals 2296' SLM.

Signed D. C. Shackelford