



Western Michigan University
ScholarWorks at WMU

Legacy Scout Tickets from Pure Oil Company

8-20-2021

MGRRE_PureOilScoutTickets_Eardley, T K_1_21081114690000

MGRRE

Western Michigan University

Follow this and additional works at: <https://scholarworks.wmich.edu/pure>



Part of the Geology Commons

WMU ScholarWorks Citation

MGRRE, "MGRRE_PureOilScoutTickets_Eardley, T K_1_21081114690000" (2021). *Legacy Scout Tickets from Pure Oil Company*. 4454.

<https://scholarworks.wmich.edu/pure/4454>

This Document is brought to you for free and open access via ScholarWorks at WMU. It has been accepted for inclusion in Legacy Scout Tickets from Pure Oil Company by an authorized administrator of ScholarWorks at WMU. See the National Digital Catalogue - Science Base Catalogue for more collections submitted by MGRRE.



MGRRE_PureOilScoutTickets_Eardley, T K_1_21081114690000

API 21081114690000

Permit Number 11469

Lease Name Eardley, T K

Well Number 1

County Kent

Township 06N

Range 10W

Section 32

2021 DEQ or Pure co_name Fisher McCall Oil and Gas, Incorporated

Pure Number 582

Latitude 42.85609

Longitude -85.50908

THE PURE OIL COMPANY LOCATION REPORT

Date April 18, 1945

A.F.E. No. _____

Division Mich. Producing District _____

Lease T. K. Eardley

Acres _____ Lease No. _____ Elevation _____ Well No. 1 (Serial No. 582)

Quadrangle SE-SE-SE SE SE SE Sec. 32 Twp. 6 N Rge. 10 W ~~Dist.~~ Cascade Twp. Cascade

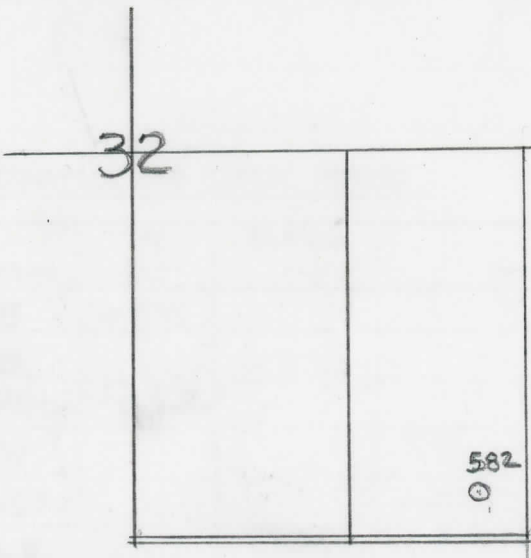
Survey _____ County Kent State Michigan

Operator Fisher-McCall Oil & Gas, Inc. Map Cascade Township, Kent County

		Feet from North Line of Lease					
<u>330</u>	<u>330</u>	"	"	East	"	"	"
<u>330</u>	<u>330</u>	"	"	South	"	"	"
		"	"	West	"	"	"
		Feet from North Line of Section					
<u>330</u>	<u>330</u>	"	"	East	"	<u>1/4</u>	"
<u>330</u>	<u>330</u>	"	"	South	"	"	"
		"	"	West	"	"	"

LEGEND

- Location
- ☀ Gas Well
- Oil Well
- ☀ Gas - Distillate Well
- ∅ or ○ Dry Hole
- Dry Showing Oil
- ☀ Dry Showing Gas
- ⊗ Abandoned Location
- ☀ or ⊗ Abandoned Gas Well
- or ● Abandoned Oil Well
- or ○ Input Well



Remarks: _____

Scale _____

Submitted by PN Civil Engineer

Approved by _____ Division Manager

Approved by _____ Vice-President - General Manager

LOCATION REPORT
THE PURE OIL COMPANY

The Pure Oil Company

COMPLETION RECORD OF WELLS DRILLED BY OTHER OPERATORS

Michigan Producing Division

Date May 9, 1945 No. 582

State Mich. County Kent ~~Dist.~~ Cascade Twp. Cascade Sec. 32 Twp. 6 N Rge. 10 W
 (Serial No.)

Well No. 1 (~~County~~) 582 Farm T. K. Bardley Acres

Operator Fisher-McCall Oil & Gas, Inc. Information secured ~~from~~ Scouting Department By

Date well started 4-10-45 Date well completed 5-1-45 Elevation 747.3

PRODUCTION BOARD

1st 24 hours natural Dry Hole

2nd 24 hours natural

Date of shot No. of quarts From To From to

Date of acid No. of gallons

1st 24 hours after acid shot

2nd 24 hours after acid shot

FORMATION AND CASING RECORD

Formation	Top	Bottom	Top Pay	Bottom Pay	Remarks	Casing	
						Size	Set at
Marshall	242	485	(+505)			10"	244
"	512	528				8-1/4"	530
Coldw. Red Rock	1376	1390	(629)	S.L.M.			
Antrim (light)	1735	(988)					
Antrim (dark)	1800	(1053)					
Traverse Form.	1904	S.L.M.	(1157)				
Traverse Line	1963	"	(1216)		Water (300 ft.) at 1983.		
Total Depth		1994	(1247)		(1236)		

Remarks 1192' eq. 1185' S.L.M.; 1970' eq. 1960' S.L.M.

Signed D. C. Shackelford