



Western Michigan University
ScholarWorks at WMU

Legacy Scout Tickets from Pure Oil Company

8-20-2021

**MGRRE_PureOilScoutTickets_Green, Edward C. & Alice
M._1_21081117910000**

MGRRE
Western Michigan University

Follow this and additional works at: <https://scholarworks.wmich.edu/pure>



Part of the Geology Commons

WMU ScholarWorks Citation

MGRRE, "MGRRE_PureOilScoutTickets_Green, Edward C. & Alice M._1_21081117910000" (2021). *Legacy Scout Tickets from Pure Oil Company*. 4465.
<https://scholarworks.wmich.edu/pure/4465>

This Document is brought to you for free and open access via ScholarWorks at WMU. It has been accepted for inclusion in Legacy Scout Tickets from Pure Oil Company by an authorized administrator of ScholarWorks at WMU. See the National Digital Catalogue - Science Base Catalogue for more collections submitted by MGRRE.



MGRRE_PureOilScoutTickets_Green, Edward C. & Alice M._1_21081117910000

API 21081117910000

Permit Number 11791

Lease Name Green, Edward C. & Alice M.

Well Number 1

County Kent

Township 10N

Range 12W

Section 27

2021 DEQ or Pure co_name MacCallum, Byron

Pure Number 593

Latitude 43.22967

Longitude -85.72909

THE PURE OIL COMPANY

LOCATION REPORT

Date August 29, 1945

A.F.E. No. _____

Division Mich. Producing District _____

Lease Edw. C. & Alice M. Green
Edw. C. & Alice M. Green

Acres _____ Lease No. _____ Elevation _____ Well No. 1 (Serial No. 593)

Quadrangle N² SW NW Sec. 27 Twp. 10 N Rge. 12 W Twp. Tyrone

Survey _____ County Kent State Michigan

Operator Byron MacCallum Map Tyrone Township, Kent County

Feet from North Line of Lease

" " East " " "

" " South " " "

" " West " " "

Feet from North Line of Section

" " East " " "

" " South " 1/4 "

" " West " " "

330 330
660 660

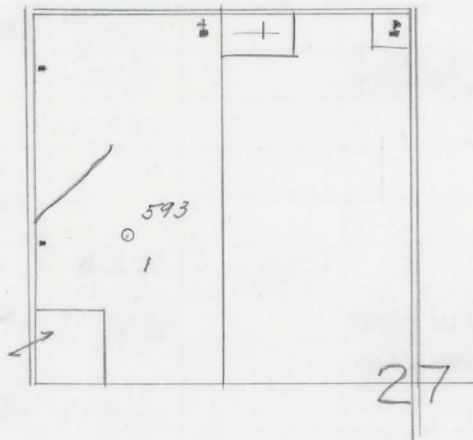
990 990
660 660

Sp 8-27-45

LEGEND

○ Location

- ☀ Gas Well
- Oil Well
- ☀ Gas - Distillate Well
- ∅ or ○ Dry Hole
- Dry Showing Oil
- ☀ Dry Showing Gas
- ⊗ Abandoned Location
- ☀ or ☀ Abandoned Gas Well
- or ● Abandoned Oil Well
- or ○ Input Well



Scale _____

Remarks: _____

Submitted by _____ Civil Engineer Approved by _____ Division Manager

Approved by _____ Vice-President - General Manager

THE PURE OIL COMPANY

COMPLETION RECORD OF WELLS DRILLED BY OTHER OPERATORS

Michigan Producing Division

Date February 20, 1946 No. 593
 State Mich. County Kent ~~Dick~~ Twp. Tyrone Sec. 27 Twp. 10 N Rge. 12 W
 Well No. 1 (Serial No.) 593 Farm Edw. C. Green Acres _____
 Operator Byron MacCallum Information secured ~~from~~ Scouting Department
 Date well started 8-27-45 Date well completed 2-18-46 Elevation 827.7

PRODUCTION BOARD

1st 24 hours natural DRY HOLE
 2nd 24 hours natural _____
 Date of shot _____ No. of quarts _____ From _____ To _____ From _____ to _____
 Date of acid _____ No. of gallons _____
 1st 24 hours after acid shot _____
 2nd 24 hours after acid shot _____

FORMATION AND CASING RECORD

Formation	Top	Bottom	Top Pay	Bottom Pay	Remarks	Casing	
						Size	Set at
Brown Dolomite	640	S.L.M.	(-1188)			10"	377
<i>Jerry</i> Marshall	675	925	(-1153)		5 ba. water per hr. 875-925. (-47)	8-1/4"	875
Coldw. Red Rock	1621	1635	(-793)			6-5/8"	1481
Sunbury	1739	(-911)					
Antrim (light)	2110	(-1282)					
Antrim (dark)	2123	2328	S.L.M.	(-1295)			
Traverse Lime	2367	S.L.M.	(-1539)s		Show oil, gas, and salt water 2370-2373	S.L.M.	(-1542)
<i>Traverse fm</i>	2320	(-1492)s					
Dundee	2735	S.L.M.	(-1907)s				
Detroit River	2797	2785	(-1957)s		1800 ft. salt water in 18 hrs. 2860-2871. (-2032)		
Total Depth		2871	(-2043)				

Remarks 671' eq. 673' S.L.M.; 2348' eq. 2343' S.L.M.; 2369' eq. 2378' S.O.M.; 2380' eq. 2375' S.L.M.; 2733' eq. 2737' S.L.M.

Signed D. C. Shackelford