



Western Michigan University
ScholarWorks at WMU

Legacy Scout Tickets from Pure Oil Company

8-20-2021

**MGRRE_PureOilScoutTickets_Brewer, Henrietta
J_1_21081118050000**

MGRRE
Western Michigan University

Follow this and additional works at: <https://scholarworks.wmich.edu/pure>



Part of the Geology Commons

WMU ScholarWorks Citation

MGRRE, "MGRRE_PureOilScoutTickets_Brewer, Henrietta J_1_21081118050000" (2021). *Legacy Scout Tickets from Pure Oil Company*. 4466.
<https://scholarworks.wmich.edu/pure/4466>

This Document is brought to you for free and open access via ScholarWorks at WMU. It has been accepted for inclusion in Legacy Scout Tickets from Pure Oil Company by an authorized administrator of ScholarWorks at WMU. See the National Digital Catalogue - Science Base Catalogue for more collections submitted by MGRRE.



MGRRE_PureOilScoutTickets_Brewer, Henrietta J_1_21081118050000

API 21081118050000

Permit Number 11805

Lease Name Brewer, Henrietta J

Well Number 1

County Kent

Township 05N

Range 11W

Section 8

2021 DEQ or Pure co_name Oil Producers, Incorporated

Pure Number 594

Latitude 42.82916

Longitude -85.62588

THE PURE OIL COMPANY

LOCATION REPORT

Date September 6, 1945

A.F.E. No. _____

Division Mich. Producing District _____

Lease Henrietta J. Brewer

Acres _____ Lease No. 8 Elevation _____ Well No. 1 (Serial No. 594)

Quadrangle NE SE SE Sec. 8 Twp. 5 N Rge. 11 W Twp. GAINES

Survey _____ County Kent State Michigan

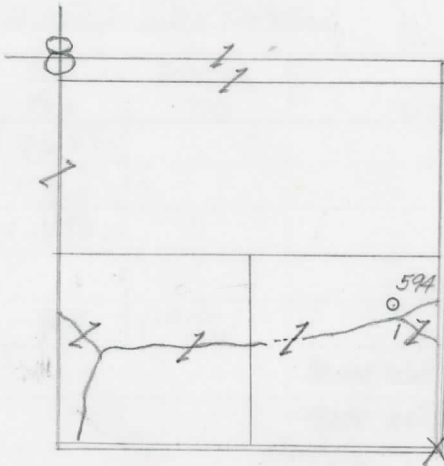
Operator Oil Producers, Inc. Map Gaines Township, Kent County

<u>330</u>	<u>330</u>	Feet from North Line of Lease
<u>330</u>	<u>330</u>	" " East " " "
		" " South " " "
		" " West " " "
		Feet from North Line of Section
<u>330</u>	<u>330</u>	" " East " " <u>1/4</u>
<u>990</u>	<u>990</u>	" " South " " "
		" " West " " "

LEGEND

- Location
- ☀ Gas Well
- Oil Well
- ☀ Gas-Distillate Well
- ∅ or ○ Dry Hole
- or ○ Dry Showing Oil
- ☀ Dry Showing Gas
- ⊗ Abandoned Location
- ☀ or ☀ Abandoned Gas Well
- or ● Abandoned Oil Well
- or ○ Input Well

Burns



Scale _____

Remarks: _____

Submitted by _____ Civil Engineer Approved by _____ Division Manager

Approved by _____ Vice-President - General Manager

THE PURE OIL COMPANY

COMPLETION RECORD OF WELLS DRILLED BY OTHER OPERATORS

Michigan Producing

Division

Date June 26, 1946 No. 594
 State Mich. Co. Kent ~~DISCO~~ Twp. Gaines Sec. 8 Twp. 5 N Rge. 11 W
 Well No. 1 Serial No. 594 Farm Henrietta J. Brewer Acres _____
 Operator Oil Producers, Inc.
 Date started 9-6-45 Date completed 10-14-45 Elevation 743.0

PRODUCTION RECORD

1st 24 hours natural
 Date of shot 10-17-45; No. of quarts 150 From _____ To _____
 Date of acid 2-25-46 No. of gallons 600
 1st 24 hours after acid ~~shot~~ Pumped 6 Bbls. - pumped off
 Completed as: Oil Well _____ Gas Well _____ Dry Hole X

FORMATION AND CASING RECORD

Formation	Top	Bottom	Top Pay	Bottom Pay	Remarks	Casing	
						Size	Set at
Marshall	188	440	(+555)			10"	152
Coldwater Lime	745	753	(-2)			8-1/4"	450
Coldw. Red Rock	1216	1223 ?	(-473)			6-5/8" RH	1828
Antrim (light)	1585	(-842)				5-3/16"	1831
Antrim (dark)	1690	1797	S.L.M.	(-947)			
Traverse Line	1859	(-1116)			Show oil 1869.	(-1126)	
" <i>fm.</i>	1797	(-1054)			Show salt water at 1910. (-1167)		
Total Depth		1910	(-1167)				

Remarks Put on pump four months after treating - pumped all salt water - abandoned.
1800' equals 1797' S.L.M.

Signed D. C. Shackelford