



Western Michigan University
ScholarWorks at WMU

Legacy Scout Tickets from Pure Oil Company

8-20-2021

MGRRE_PureOilScoutTickets_Meek, Eliza_1_21081118700000

MGRRE

Western Michigan University

Follow this and additional works at: <https://scholarworks.wmich.edu/pure>



Part of the Geology Commons

WMU ScholarWorks Citation

MGRRE, "MGRRE_PureOilScoutTickets_Meek, Eliza_1_21081118700000" (2021). *Legacy Scout Tickets from Pure Oil Company*. 4468.

<https://scholarworks.wmich.edu/pure/4468>

This Document is brought to you for free and open access via ScholarWorks at WMU. It has been accepted for inclusion in Legacy Scout Tickets from Pure Oil Company by an authorized administrator of ScholarWorks at WMU. See the National Digital Catalogue - Science Base Catalogue for more collections submitted by MGRRE.



MGRRE_PureOilScoutTickets_Meek, Eliza_1_21081118700000

API 21081118700000

Permit Number 11870

Lease Name Meek, Eliza

Well Number 1

County Kent

Township 09N

Range 11W

Section 19

2021 DEQ or Pure co_name Lang, J. W. Company

Pure Number 596

Latitude 43.14841

Longitude -85.66929

THE PURE OIL COMPANY

LOCATION REPORT

Date October 3, 1945 A.F.E. No. _____
 Division Mich. Producing District _____ Lease Eliza Meek
 Acres _____ Lease No. _____ Elevation _____ Well No. 1 (Serial No. 596)
 Quadrangle NW-SW-SW Sec. 19 Twp. 9 N Rge. 11 W Algoma
 Survey _____ County Kent State Michigan
 Operator J. W. Lang Co. Map Algoma Township, Kent County
330 330 Feet from North Line of Lease

Feet from North Line of Lease

" " East " " "

" " South " " "

Feet from North Line of Section

" " East " " "

" " South " 1/4 "

" " West " " "

Feet from North Line of Section

" " East " " "

" " South " 1/4 "

" " West " " "

LEGEND

○ Location

☀ Gas Well

● Oil Well

☀ Gas - Distillate Well

○ or ○ Dry Hole

● Dry Showing Oil

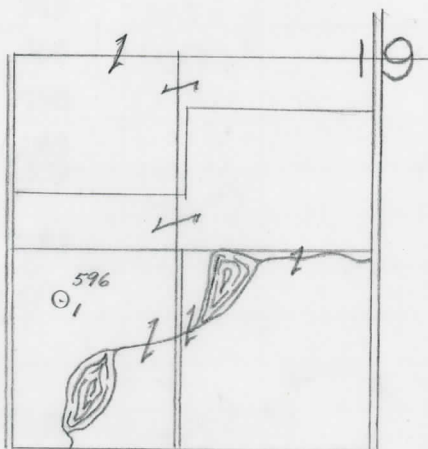
☉ Dry Showing Gas

☉ Abandoned Location

☀ or ☉ Abandoned Gas Well

● or ● Abandoned Oil Well

● or ○ Input Well



Scale _____

Remarks: _____

Submitted by _____ Approved by _____ Division Manager

Civil Engineer

Approved by _____ Vice-President - General Manager

Vice-President - General Manager

Reum

The Pure Oil Company
COMPLETION RECORD OF WELLS DRILLED BY OTHER OPERATORS

Michigan Producing Division

WC

Date November 28, 1945 No. 596
 State Michigan Co. Kent ~~INDEX~~ Twp. Algoma Sec. 19 Twp. 9 N Rge. 11 W
 Well No. 1 Serial No. 596 Farm Eliza Meek Acres _____
 Operator J. W. Lang Company
 Date started 10-8-45 Date completed 11-13-45 Elevation 758.1

PRODUCTION RECORD

1st 24 hours natural
 Date of shot _____ No. of quarts _____ From _____ To _____ From _____ to _____
 Date of acid _____ No. of gallons _____
 1st 24 hours after acid _____
 Completed as: Oil Well _____ Gas Well _____ Dry Hole X

FORMATION AND CASING RECORD

| Formation | Top | Bottom | Top Pay | Bottom Pay | Remarks | Casing | |
|-----------------|------|--------|---------|------------|--|-----------|--------|
| | | | | | | Size | Set at |
| Brown Dolomite | 505 | 513 | (+253) | | | 10" | 296 |
| Mich. Stray | 525 | 605 | (+233) | | | 8-1/4" | 804 |
| Marshall | 612 | 790 | (+146) | | | 6-5/8" RH | 2210 |
| Coldwater Lime | 1047 | 1063 | (-289) | | | | |
| Coldw. Red Rock | 1525 | 1535 | (-767) | | | | |
| Antrim (light) | 1875 | | (-1117) | | | | |
| Antrim (dark) | 2025 | 2185 | (-1267) | | | | |
| Traverse Lime | 2235 | (+477) | | | Show salt water from 2235-2236. (+477) 500 ft. S.W. 2246. (+488) | | |
| Total Depth | | 2257 | (+499) | | | | |

Remarks _____

Signed D. C. Shackelford