



---

Legacy Scout Tickets from Pure Oil Company

---

8-20-2021

## MGRRE\_PureOilScoutTickets\_Slayton, Raymond E et al\_1\_21081120690000

MGRRE

*Western Michigan University*

Follow this and additional works at: <https://scholarworks.wmich.edu/pure>



Part of the Geology Commons

---

### WMU ScholarWorks Citation

MGRRE, "MGRRE\_PureOilScoutTickets\_Slayton, Raymond E et al\_1\_21081120690000" (2021). *Legacy Scout Tickets from Pure Oil Company*. 4473.  
<https://scholarworks.wmich.edu/pure/4473>

This Document is brought to you for free and open access via ScholarWorks at WMU. It has been accepted for inclusion in Legacy Scout Tickets from Pure Oil Company by an authorized administrator of ScholarWorks at WMU. See the National Digital Catalogue - Science Base Catalogue for more collections submitted by MGRRE.



---

**MGRRE\_PureOilScoutTickets\_Slayton, Raymond E et al\_1\_21081120690000**

API 21081120690000

Permit Number 12069

Lease Name Slayton, Raymond E et al

Well Number 1

County Kent

Township 08N

Range 09W

Section 23

2021 DEQ or Pure co\_name Smith Petroleum Company

Pure Number 601

Latitude 43.06856

Longitude -85.33341

# THE PURE OIL COMPANY LOCATION REPORT

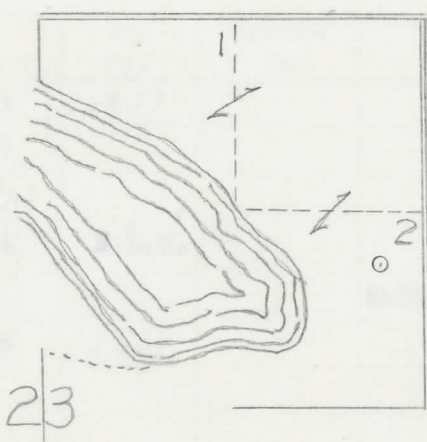
Date January 6, 1946 A.F.E. No. Raymond E. Slayton et al  
 Division Mich. Producing District \_\_\_\_\_ Lease Raymond E. Slayton, et al  
 Acres \_\_\_\_\_ Lease No. \_\_\_\_\_ Elevation \_\_\_\_\_ Well No. 1 (Serial No. 600)  
 Quadrangle NE-SE-NE Sec. 23 Twp. 8 N Rge. 9 W Grattan Grattan  
 Survey \_\_\_\_\_ County Kent State Michigan  
 Operator Smith Petroleum Company Map Grattan Township, Kent County

Feet from North Line of Lease			
<u>330</u>	<u>330</u>	" "	East " " "
<u>990</u>	<u>990</u>	" "	South " " "
		" "	West " " "
Feet from North Line of Section			
<u>330</u>	<u>330</u>	" "	East " " <u>1/4</u>
<u>990</u>	<u>990</u>	" "	South " " "
		" "	West " " "

**LEGEND**

- Location
- ☀ Gas Well
- Oil Well
- ☀ Gas - Distillate Well
- ⊘ or ○ Dry Hole
- Dry Showing Oil
- ☀ Dry Showing Gas
- ⊘ Abandoned Location
- ☀ or ☀ Abandoned Gas Well
- or ● Abandoned Oil Well
- or ○ Input Well

*Reu*



Remarks: \_\_\_\_\_  
 \_\_\_\_\_  
 \_\_\_\_\_

Submitted by CB Civil Engineer Approved by \_\_\_\_\_ Division Manager  
 Approved by \_\_\_\_\_ Vice-President - General Manager

The Pure Oil Company  
 COMPLETION RECORD OF WELLS DRILLED BY OTHER OPERATORS

Michigan Producing Division

Date February 20, 1946 No. 601  
 State Mich. County Kent ~~District~~ Twp. Grattan Sec. 23 Twp. 8 N Rge 9 W  
 (Serial No.)  
 Well No. 1 ~~(County No.)~~ 601 Farm R. E. Slayton, et al Acres  
 Operator Smith Petroleum Company Information secured ~~from~~ By Scouting Department  
 Date well started 1-8-46 Date well completed 2-16-46 Elevation 850.9

PRODUCTION BOARD

1st 24 hours natural DRY HOLE  
 2nd 24 hours natural  
 Date of shot No. of quarts From To From to  
 Date of acid No. of gallons  
 shot  
 1st 24 hours after acid  
 shot  
 2nd 24 hours after acid

FORMATION AND CASING RECORD

Formation	Top	Bottom	Top Pay	Bottom Pay	Remarks	Casing	
						Size	Set at
Marshall	767	791	(+84)			10"	351
"	808	995				8-1/4"	768
Coldw. Red Rock	1897	(-1046)				6-5/8"	1041
Antrim (-1402)	2253	2424	S.L.M.				
Traverse Lime	2467	(-1616)			Salt water 2508-2520.		
Total Depth		2520	(-1669)		(-1659)		

Remarks 2411' equals 2429' S.L.M.

Signed D. C. Shackelford