



Western Michigan University
ScholarWorks at WMU

Legacy Scout Tickets from Pure Oil Company

8-20-2021

MGRRE_PureOilScoutTickets_De Young & Saagman_1_21081125600000

MGRRE

Western Michigan University

Follow this and additional works at: <https://scholarworks.wmich.edu/pure>



Part of the Geology Commons

WMU ScholarWorks Citation

MGRRE, "MGRRE_PureOilScoutTickets_De Young & Saagman_1_21081125600000" (2021). *Legacy Scout Tickets from Pure Oil Company*. 4492.

<https://scholarworks.wmich.edu/pure/4492>

This Document is brought to you for free and open access via ScholarWorks at WMU. It has been accepted for inclusion in Legacy Scout Tickets from Pure Oil Company by an authorized administrator of ScholarWorks at WMU. See the National Digital Catalogue - Science Base Catalogue for more collections submitted by MGRRE.



MGRRE_PureOilScoutTickets_De Young & Saagman_1_21081125600000

API 21081125600000

Permit Number 12560

Lease Name De Young & Saagman

Well Number 1

County Kent

Township 06N

Range 12W

Section 6

2021 DEQ or Pure co_name Goodale Enterprises LLC

Pure Number 620

Latitude 42.9346019

Longitude -85.7731128

THE PURE OIL COMPANY
LOCATION REPORT

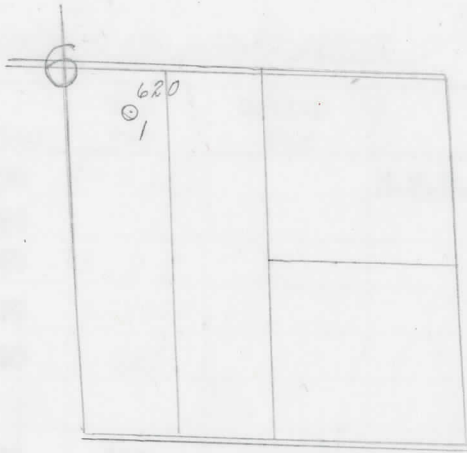
Date August 28, 1946 A.F.E. No. _____
 Division Mich. Producing District _____ Lease DeYoung - Saagman
 Acres _____ Lease No. _____ Elevation _____ Well No. 1 (Serial No. 620)
 Quadrangle NW-NW-SE Sec. 6 Twp. 6 N Rge. 12 W Twp. Walker
 Survey _____ County Kent State Michigan
 Operator Carl E. Grimes Map Walker Township, Kent County

330	330	Feet from North Line of Lease
330	330	" " East " " "
330	330	" " South " " "
330	330	" " West " " "
		Feet from North <u>1/4</u> of Section
		" " East " " "
		" " South " " "
330	330	" " West " " "

LEGEND

- ☉ Gas Well
- Oil Well
- ☉ or ☉ Gas - Distillate Well
- or ○ Dry Hole
- Dry Showing Oil
- Location
- ☉ Dry Showing Gas
- ⊗ Abandoned Location
- ☉ or ☉ Abandoned Gas Well
- or ● Abandoned Oil Well
- or ○ Input Well

*me 100
Sp 8-19-46*



Remarks: _____ Scale _____

Submitted by UB Civil Engineer Approved by _____ Division Manager
 Approved by _____ Vice-President - General Manager

Date _____

LOCATION BELOW
THE LAKE OIL COMPANY

DATE NO. _____

COMPLETION RECORD OF WELLS DRILLED BY OTHER OPERATORS

Michigan Producing Division

Date Sept. 25, 1946 No. 620
 State Michigan Co. Kent Risk. NW-NW-SE
 Twp. Walker Sec. 6 Twp. 6 N Rge. 12 W
 Well No. 1 Serial No. 620 Farm DeYoung-Saagman Acres _____
 Operator Carl E. Grimes
 Date started 8-19-46 Date completed 9-19-46 Elevation 660.8

PRODUCTION RECORD

1st 24 hours natural Filled up 250 ft.
 Date of shot _____ No. of quarts _____ From _____ To _____
 Date of acid 9-20-46 No. of gallons 500
 1st 24 hours after acid Pumped 30 Bbls.
 Completed as: Oil Well X Gas Well _____ Dry Hole _____

FORMATION AND CASING RECORD

Formation	Top	Bottom	Top Pay	Bottom Pay	Remarks	Casing	
						Size	Set at
Marshall	141	230	(+520)		H.F.W. 141.	10"	97
"	260	390			(+520)	8-1/4"	467
Coldwater Lime	664	678	(-3)			6-5/8"	RH 1302
Coldw. Red Rock	1091	1109	(-430)			5-3/16"	1803
Berea	1156	1180	(-495)				
Antrim (light)	1647	(-986)					
Antrim (dark)	1665	1780	SLM.	(-1004)			
Traverse Lime	1825	(-1164)			Show oil 1830-1834.	(-1169)	
" f.w.	1780	(-1119)	1830	1834	(-1169)		
			1849	1853	(-1188)		
Total Depth		1853	(-1192)				

Remarks 1786' equals 1780' SLM.

Signed D. C. Shackelford