



Western Michigan University
ScholarWorks at WMU

Legacy Scout Tickets from Pure Oil Company

8-20-2021

MGRRE_PureOilScoutTickets_Christie, Leroy_2_21081126010000

MGRRE

Western Michigan University

Follow this and additional works at: <https://scholarworks.wmich.edu/pure>



Part of the Geology Commons

WMU ScholarWorks Citation

MGRRE, "MGRRE_PureOilScoutTickets_Christie, Leroy_2_21081126010000" (2021). *Legacy Scout Tickets from Pure Oil Company*. 4493.

<https://scholarworks.wmich.edu/pure/4493>

This Document is brought to you for free and open access via ScholarWorks at WMU. It has been accepted for inclusion in Legacy Scout Tickets from Pure Oil Company by an authorized administrator of ScholarWorks at WMU. See the National Digital Catalogue - Science Base Catalogue for more collections submitted by MGRRE.



MGRRE_PureOilScoutTickets_Christie, Leroy_2_21081126010000

API 21081126010000

Permit Number 12601

Lease Name Christie, Leroy

Well Number 2

County Kent

Township 09N

Range 11W

Section 36

2021 DEQ or Pure co_name McCall, S. L

Pure Number 621

Latitude 43.11854

Longitude -85.56966

THE PURE OIL COMPANY LOCATION REPORT

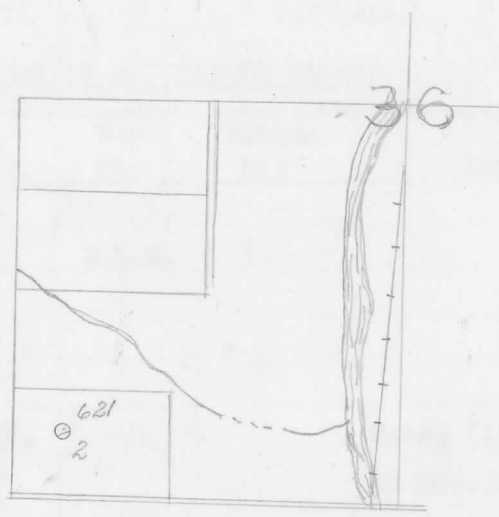
Date September 18, 1946 A.F.E. No. Leroy Christie
 Division Mich. Producing District _____ Lease Leroy Christie
 Acres _____ Lease No. _____ Elevation _____ Well No. 2 (Serial No. 621)
 Quadrangle SW-SW-SW Sec. 36 Twp. 9 N Rge. 11 W ~~XXXX~~ ~~XXXX~~ Algoma
 Survey _____ County Kent State Michigan
 Operator S. L. McCall Map Algoma Township, Kent County

_____		Feet from North Line of Lease	
_____	_____	" "	East " " "
<u>450</u>	<u>450</u>	" "	South " " "
<u>330</u>	<u>330</u>	" "	West " " "
_____		Feet from North Line of Section	
_____	_____	" "	East " " "
<u>450</u>	<u>450</u>	" "	South " <u>1/4</u> "
<u>330</u>	<u>330</u>	" "	West " " "

LEGEND

- Location
- ☀ Gas Well
- Oil Well
- ☀ Gas - Distillate Well
- ∅ or ○ Dry Hole
- Dry Showing Oil
- ☀ Dry Showing Gas
- ⊗ Abandoned Location
- ☀ or ☀ Abandoned Gas Well
- or ● Abandoned Oil Well
- or ○ Input Well

W 80



Remarks: _____

Scale _____

Submitted by CB Civil Engineer Approved by _____ Division Manager
 Approved by _____ Vice-President - General Manager

COMPLETION RECORD OF WELLS DRILLED BY OTHER OPERATORS

Michigan Producing DIVISION

Date November 20, 1946 No. 621
 State Mich. Co. Kent Twp. Alcona Sec. 36 Twp. 9 N Rge. 11 W
 Well No. 2 Serial No. 621 Farm Leroy Christie Acres _____
 Operator S. L. McCall
 Date started 9-10-46 Date completed 11-8-46 Elevation 809.1

PRODUCTION RECORD

1st 24 hours natural _____
 Date of shot _____ No. of quarts _____ From _____ To _____
 Date of acid _____ No. of gallons _____ shot _____
 1st 24 hours after acid _____
 Completed as: Oil Well _____ Gas Well _____ Dry Hole

FORMATION AND CASING RECORD

Formation	Top	Bottom	Top Pay	Bottom Pay	Remarks	Casing	
						Size	Set at
Marshall	570	844	(+239)			10"	234
Coldw. Red Rock	1642	1651	S.L.M.	(-833)		8-1/4"	413
Antrim (light)	1780	(-971)				6-5/8"	856
Antrim (dark)	2083	(-1274)				5-3/16"	2278
Traverse Form.	2252	(-1443)					
Traverse Lime	2297	S.L.M.	(-1488)		Water (175 ft. in 18 hrs.) 2302-2304.		
Total Depth		2304	(-1495)		(-1493)		

Remarks 1648' CTM equals 1644' SLM.

Signed Harry J. Gaspeny