



Western Michigan University
ScholarWorks at WMU

Legacy Scout Tickets from Pure Oil Company

8-20-2021

MGRRE_PureOilScoutTickets_Beals, Ora J._1_21081126880000

MGRRE

Western Michigan University

Follow this and additional works at: <https://scholarworks.wmich.edu/pure>



Part of the Geology Commons

WMU ScholarWorks Citation

MGRRE, "MGRRE_PureOilScoutTickets_Beals, Ora J._1_21081126880000" (2021). *Legacy Scout Tickets from Pure Oil Company*. 4497.

<https://scholarworks.wmich.edu/pure/4497>

This Document is brought to you for free and open access via ScholarWorks at WMU. It has been accepted for inclusion in Legacy Scout Tickets from Pure Oil Company by an authorized administrator of ScholarWorks at WMU. See the National Digital Catalogue - Science Base Catalogue for more collections submitted by MGRRE.



MGRRE_PureOilScoutTickets_Beals, Ora J._1_21081126880000

API 21081126880000

Permit Number 12688

Lease Name Beals, Ora J.

Well Number 1

County Kent

Township 10N

Range 11W

Section 34

2021 DEQ or Pure co_name Rex Oil and Gas Company

Pure Number 625

Latitude 43.2115

Longitude -85.59717

THE PURE OIL COMPANY

LOCATION REPORT

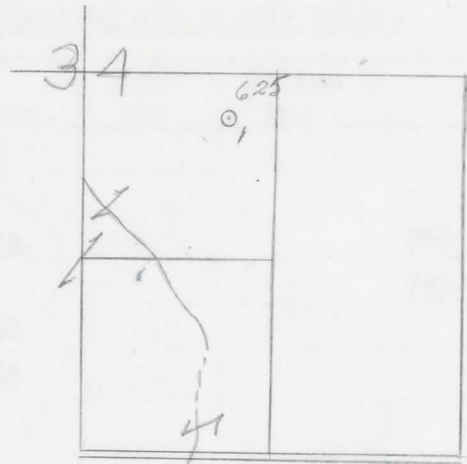
Date October 16, 1946 A.F.E. No. _____
 Division Mich. Producing District _____ Lease Ora J. Beals
 Acres _____ Lease No. _____ Elevation _____ Well No. 1 (Serial No. 625)
 Quadrangle NE-NW-SE Sec. 34 Twp. 10 N Rge. 11 W Dist. Solon
 Survey _____ County Kent State Michigan
 Operator Rex Oil & Gas Co. Map Solon Township, Kent County

330 330 Feet from North Line of Lease
 " " East " " "
 " " South " " "
 " " West " " "
330 330 Feet from North Line of Section
 " " East " " "
 " " South " " "
990 990 " " West " " "

LEGEND

- Location
- ☀ Gas Well
- Oil Well
- ☀ Gas - Distillate Well
- or ○ Dry Hole
- Dry Showing Oil
- ☀ Dry Showing Gas
- Abandoned Location
- ☀ or ☀ Abandoned Gas Well
- or ● Abandoned Oil Well
- or ○ Input Well

low



Scale _____

Remarks: _____

Submitted by CB Civil Engineer Approved by _____ Division Manager
 Approved by _____ Vice-President - General Manager

COMPLETION RECORD OF WELLS DRILLED BY OTHER OPERATORS

Michigan Producing DIVISION

Date November 27, 1946 No. 625
 State Mich. Co. Kent ~~District~~ Twp. Solon Sec. 34 Twp. 10 N Rge. 11 W
 Well No. 1 Serial No. 625 Farm Ora J. Beals Acres _____
 Operator Rex Oil & Gas Company
 Date started 10-25-46 Date completed 11-21-46 Elevation 852.5

PRODUCTION RECORD

1st 24 hours natural _____
 Date of shot _____ No. of quarts _____ From _____ To _____ From _____ To _____
 Date of acid _____ No. of gallons _____ shot _____
 1st 24 hours after acid _____
 Completed as: Oil Well _____ Gas Well _____ Dry Hole X

FORMATION AND CASING RECORD

Formation	Top	Bottom	Top Pay	Bottom Pay	Remarks	Casing	
						Size	Set at
Brown Dolomite	670	(+183)				10"	385
Mich. Stray	710	(+143)				8-1/4"	520
Marshall	755	932	(+98)		550 ft. salt water 755-766. (+98)	6-5/8"	950
Coldwater Lime	1222	1261	(-369)				
Coldw. Red Rock	1714	1725	(-861)				
Antrim	2170	(-1317)					
Traverse Form.	2348	S.L.M.	(-1495)				
Traverse Lime	2390	"	(-1537)		Salt Water (200 ft. in 12 hrs.) 2409-2421. (-1556)		
Total Depth		2421	(-1568)				

Remarks 2390' CTM equals 2398' SIM.

Signed Harry J. Gaspeny