



Western Michigan University  
ScholarWorks at WMU

---

Legacy Scout Tickets from Pure Oil Company

---

8-20-2021

## MGRRE\_PureOilScoutTickets\_Christie & Forrest Comm\_2\_21081127010000

MGRRE

*Western Michigan University*

Follow this and additional works at: <https://scholarworks.wmich.edu/pure>



Part of the Geology Commons

---

### WMU ScholarWorks Citation

MGRRE, "MGRRE\_PureOilScoutTickets\_Christie & Forrest Comm\_2\_21081127010000" (2021). *Legacy Scout Tickets from Pure Oil Company*. 4498.  
<https://scholarworks.wmich.edu/pure/4498>

This Document is brought to you for free and open access via ScholarWorks at WMU. It has been accepted for inclusion in Legacy Scout Tickets from Pure Oil Company by an authorized administrator of ScholarWorks at WMU. See the National Digital Catalogue - Science Base Catalogue for more collections submitted by MGRRE.



---

**MGRRE\_PureOilScoutTickets\_Christie & Forrest Comm\_2\_21081127010000**

API 21081127010000

Permit Number 12701

Lease Name Christie & Forrest Comm

Well Number 2

County Kent

Township 09N

Range 11W

Section 36

2021 DEQ or Pure co\_name Muskegon Development Company

Pure Number 626

Latitude 43.12188

Longitude -85.5672

# WELL REPORT - OUTSIDE OPERATIONS

SERIAL NO. 626

STATE Michigan <sup>PER</sup> Kent  
CO.

OPERATOR Socony Vacuum Oil Co., Inc.

FARM Christie & Forrest Comm. WELL NO. 2

TWP. Algoma S. 36 T. 9N R. 11W  
~~SURVEY~~

LOC. SE NW SW

WILDCAT  FIELD  FIELD NAME \_\_\_\_\_

MAP NO. \_\_\_\_\_ CO-ORD. \_\_\_\_\_ ELEV. \_\_\_\_\_

STATUS Plugged 7-17-56 (converted to BDW)

Total Depth 2246'

NORTH

|  |  |  |  |  |  |  |  |
|--|--|--|--|--|--|--|--|
|  |  |  |  |  |  |  |  |
|  |  |  |  |  |  |  |  |
|  |  |  |  |  |  |  |  |
|  |  |  |  |  |  |  |  |
|  |  |  |  |  |  |  |  |
|  |  |  |  |  |  |  |  |
|  |  |  |  |  |  |  |  |
|  |  |  |  |  |  |  |  |

DATE 8-20-56 SCOUT JEC

THE PURE OIL COMPANY  
LOCATION REPORT

Date October 23, 1946  
October 23, 1946

A.F.E. No. \_\_\_\_\_

Christie & Forrest Comm.  
Christie & Forrest Comm.

Division Mich. Producing District \_\_\_\_\_ Lease \_\_\_\_\_

Acres \_\_\_\_\_ Lease No. \_\_\_\_\_ Elevation \_\_\_\_\_ Well No. 2 (Serial No. 626)

Quadrangle SE-NW-SW SE NW SW Sec. 36 Twp. 9N Rge. 11W Blk. Algoma Dist. Algoma Twp. \_\_\_\_\_

Survey \_\_\_\_\_ County Kent State Michigan

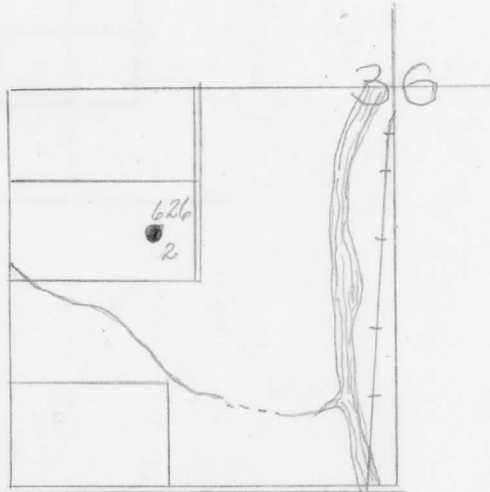
Operator Socony Vacuum Oil Co., Inc. Map Algoma Township, Kent County

|            |            | Feet from North Line of Lease   |   |       |       |
|------------|------------|---------------------------------|---|-------|-------|
| <u>330</u> | <u>330</u> | "                               | " | East  | " " " |
| <u>330</u> | <u>330</u> | "                               | " | South | " " " |
|            |            | "                               | " | West  | " " " |
|            |            | Feet from North Line of Section |   |       |       |
| <u>990</u> | <u>990</u> | "                               | " | East  | " " " |
|            |            | "                               | " | South | " " " |
| <u>990</u> | <u>990</u> | "                               | " | West  | " " " |

LEGEND

- Location
- ☉ Gas Well
- Oil Well
- ☉ Gas - Distillate Well
- or ○ Dry Hole
- Dry Showing Oil
- ☉ Dry Showing Gas
- ⊖ Abandoned Location
- ☉ or ☉ Abandoned Gas Well
- or ● Abandoned Oil Well
- ⊖ or ⊖ Input Well

T.D. 2246'



Scale \_\_\_\_\_

Remarks: \_\_\_\_\_

Submitted by CB \_\_\_\_\_ Approved by \_\_\_\_\_ Division Manager

Civil Engineer

Approved by \_\_\_\_\_ Vice-President - General Manager

Vice-President - General Manager