



Western Michigan University  
ScholarWorks at WMU

---

Legacy Scout Tickets from Pure Oil Company

---

8-20-2021

**MGRRE\_PureOilScoutTickets\_Oom, John et  
al\_2\_21081128310000**

MGRRE  
*Western Michigan University*

Follow this and additional works at: <https://scholarworks.wmich.edu/pure>



Part of the Geology Commons

---

#### **WMU ScholarWorks Citation**

MGRRE, "MGRRE\_PureOilScoutTickets\_Oom, John et al\_2\_21081128310000" (2021). *Legacy Scout Tickets from Pure Oil Company*. 4501.  
<https://scholarworks.wmich.edu/pure/4501>

This Document is brought to you for free and open access via ScholarWorks at WMU. It has been accepted for inclusion in Legacy Scout Tickets from Pure Oil Company by an authorized administrator of ScholarWorks at WMU. See the National Digital Catalogue - Science Base Catalogue for more collections submitted by MGRRE.



---

**MGRRE\_PureOilScoutTickets\_Oom, John et al\_2\_21081128310000**

API 21081128310000

Permit Number 12831

Lease Name Oom, John et al

Well Number 2

County Kent

Township 09N

Range 11W

Section 36

2021 DEQ or Pure co\_name Wing Brothers and Marvel Production Company

Pure Number 629

Latitude 43.12371

Longitude -85.56464

WELL REPORT - OUTSIDE OPERATIONS

SERIAL NO. 629

STATE Michigan <sup>YPSH</sup> CO. Kent

OPERATOR Wing Brothers, et al

FARM John Oom, et al WELL NO. 2

TWP. ~~SURVEY~~ Algoma S. 36 T. 9N R. 11W

LOC. NW NE SW

WILDCAT  FIELD  FIELD NAME \_\_\_\_\_

MAP NO. \_\_\_\_\_ CO-ORD. \_\_\_\_\_ ELEV. \_\_\_\_\_

STATUS Plugged 10-24-55

Total Depth 2239'

NORTH


DATE 3-19-56 SCOUT RFP

STATE Michigan PSH CO. Kent

OPERATOR Wing Brothers, et al

FARM John Oom, et al WELL NO. 2

TWP. SURVEY Algoma S. 36 T. 9N R. 11W

LOC. NW NE SW

WILDCAT  FIELD  FIELD NAME

MAP NO. CO-ORD. ELEV.

STATUS

Pay Plugged: 10-24-55 2239

Operator's name corrected from:  
James J. McGerry, Tr.

NORTH


DATE 6-27-55 SCOUT JEC

THE PURE OIL COMPANY  
 LOCATION REPORT

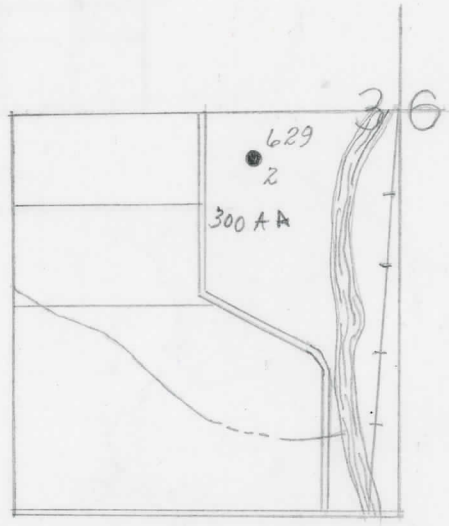
Date December 11, 1946 A.F.E. No. \_\_\_\_\_  
 Division Mich. Producing District \_\_\_\_\_ Lease John Oom, et al  
 Acres \_\_\_\_\_ Lease No. \_\_\_\_\_ Elevation \_\_\_\_\_ Well No. 2 (Serial No. 629)  
 Quadrangle NW NE SW Sec. 36 Twp. 9 N Rge. 11 W ~~Algoma~~ Algoma  
 Survey \_\_\_\_\_ County Kent State Michigan  
 Operator James J. McGerry, Tr. Map Algoma Township, Kent County

<u>330</u>	<u>330</u>	Feet from North Line of Lease
_____	_____	" " East " " "
_____	_____	" " South " " "
<u>330</u>	<u>330</u>	" " West " " "
<u>1020</u>	<u>1020</u>	Feet from North Line of Section
_____	_____	" " East " " "
_____	_____	" " South " " "
_____	_____	" " West " " "

LEGEND

- Location
- ☀ Gas Well
- Oil Well
- ☀ Gas - Distillate Well
- or ○ Dry Hole
- Dry Showing Oil
- ☀ Dry Showing Gas
- ⊗ Abandoned Location
- ☀ or ⊗ Abandoned Gas Well
- or ● Abandoned Oil Well
- or ○ Input Well

*machine*



Remarks: \_\_\_\_\_ Scale \_\_\_\_\_

Submitted by CB Civil Engineer Approved by \_\_\_\_\_ Division Manager  
 Approved by \_\_\_\_\_ Vice-President - General Manager