



Western Michigan University
ScholarWorks at WMU

Legacy Scout Tickets from Pure Oil Company

8-20-2021

**MGRRE_PureOilScoutTickets_Clark-Christie et
al_2_21081128320000**

MGRRE
Western Michigan University

Follow this and additional works at: <https://scholarworks.wmich.edu/pure>



Part of the Geology Commons

WMU ScholarWorks Citation

MGRRE, "MGRRE_PureOilScoutTickets_Clark-Christie et al_2_21081128320000" (2021). *Legacy Scout Tickets from Pure Oil Company*. 4502.
<https://scholarworks.wmich.edu/pure/4502>

This Document is brought to you for free and open access via ScholarWorks at WMU. It has been accepted for inclusion in Legacy Scout Tickets from Pure Oil Company by an authorized administrator of ScholarWorks at WMU. See the National Digital Catalogue - Science Base Catalogue for more collections submitted by MGRRE.



MGRRE_PureOilScoutTickets_Clark-Christie et al_2_21081128320000

API 21081128320000

Permit Number 12832

Lease Name Clark-Christie et al

Well Number 2

County Kent

Township 09N

Range 11W

Section 36

2021 DEQ or Pure co_name Wing Brothers and Marvel Production Company

Pure Number 630

Latitude 43.12042

Longitude -85.56475

WELL REPORT - OUTSIDE OPERATIONS

SERIAL NO. 630

STATE Michigan ^{PSH} _{CO.} Kent

THE PURE OIL COMPANY
LOCATION

Date December 11, 1946
OPERATOR Wing Brothers, et al

FARM Clark-Christie, et al WELL NO. 2

TWP. Algoma S. 36 T. 9N R. 11W

LOC. NW SE SW

WILDCAT FIELD FIELD NAME _____

MAP NO. _____ CO-ORD. _____ ELEV. _____

STATUS _____

Operator's name corrected from:
James J. McGerry, Tr.

NORTH

DATE 6-27-55 SCOUT JEC

FOC MM SE 2M
 WILL REPORT - OUTSIDE OPERATIONS
 OPERATOR VJ Roms SERIAL NO. 38 1 0M 630 JTM
 LEASE NO. 38 1 0M 630 JTM
 STATE OHIO DISTRICT 11 W TWP. 9 N RGE. 11 W
 OBSERVER MTHE BLOCHS, et al LOCATION REPORT

A.F.E. No. Clark-Christie et al
Clark-Christie, et al

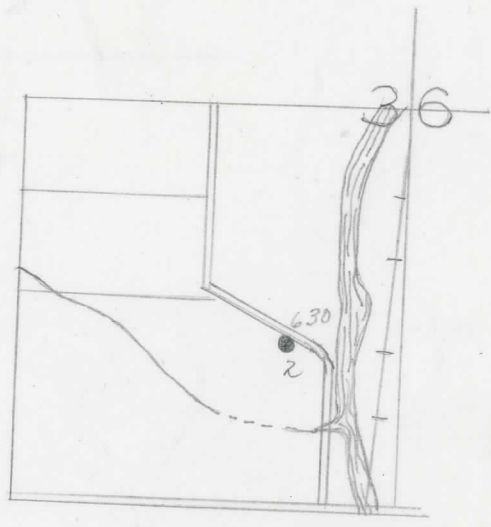
Division Mich. Producing District _____ Lease 2
 Acres _____ Lease No. _____ Elevation _____ Well No. 2 (Serial No. 630)
 Quadrangle NW SE SW Sec. 36 Twp. 9 N Rge. 11 W Twp. Algoma
 Survey _____ County Kent State Michigan
 Operator James J. McGerry, Tr. Map Algoma Township, Kent County
300 200 Feet from North Line of Lease

" " East " " "
 " " South " " "
275 275 " " West " " "
 Feet from North Line of Section
1045 1045 " " East " 1/4 "
1120 1120 " " South " " "
 " " West " " "

LEGEND

- Location
- ☀ Gas Well
- Oil Well
- ☀ Gas - Distillate Well
- ∅ or ○ Dry Hole
- Dry Showing Oil
- ☀ Dry Showing Gas
- ⊗ Abandoned Location
- ☀ or ☀ Abandoned Gas Well
- or ● Abandoned Oil Well
- or ○ Input Well

Low



1. P. - 8 bbls.

Remarks: _____ Scale _____

Submitted by CB Civil Engineer Approved by _____ Division Manager
 Approved by _____ Vice-President - General Manager