



Western Michigan University
ScholarWorks at WMU

Legacy Scout Tickets from Pure Oil Company

8-20-2021

MGRRE_PureOilScoutTickets_Wolven, George & Masie_2_21081128560000

MGRRE

Western Michigan University

Follow this and additional works at: <https://scholarworks.wmich.edu/pure>



Part of the Geology Commons

WMU ScholarWorks Citation

MGRRE, "MGRRE_PureOilScoutTickets_Wolven, George & Masie_2_21081128560000" (2021). *Legacy Scout Tickets from Pure Oil Company*. 4503.
<https://scholarworks.wmich.edu/pure/4503>

This Document is brought to you for free and open access via ScholarWorks at WMU. It has been accepted for inclusion in Legacy Scout Tickets from Pure Oil Company by an authorized administrator of ScholarWorks at WMU. See the National Digital Catalogue - Science Base Catalogue for more collections submitted by MGRRE.



MGRRE_PureOilScoutTickets_Wolven, George & Masie_2_21081128560000

API 21081128560000

Permit Number 12856

Lease Name Wolven, George & Masie

Well Number 2

County Kent

Township 09N

Range 11W

Section 25

2021 DEQ or Pure co_name Socony Mobil Oil Company, Incorporated

Pure Number 631

Latitude 43.13461

Longitude -85.56451

THE PURE OIL COMPANY LOCATION REPORT

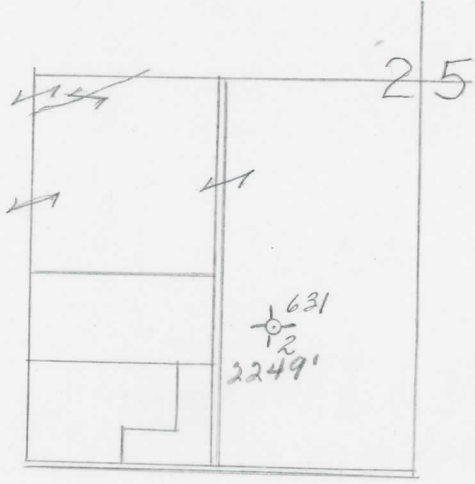
Date Dec. 18, 1946 A.F.E. No. _____
 Division Mich. Producing District _____ Lease George & Masie Wolven
George & Masie Wolven
 Acres _____ Lease No. _____ Elevation _____ Well No. 2 (Serial No. 631)
 Quadrangle NW SE SW Sec. 25 Twp. 9 N Rge. 11 W Algoma
NW SE SW Sec. 25 Twp. 9 N Rge. 11 W Algoma
 Survey _____ County Kent State Michigan
 Operator Socony Vacuum Oil Co., Inc. Map Algoma Township, Kent County
Socony Vacuum Oil Co., Inc.

<u>330</u>	<u>330</u>	Feet from North Line of Lease
_____	_____	" " East " " "
_____	_____	" " South " " "
<u>330</u>	<u>330</u>	" " West " " "
_____	_____	Feet from North Line of Section
<u>990</u>	<u>990</u>	" " East " <u>1/4</u> "
<u>990</u>	<u>990</u>	" " South " " "
_____	_____	" " West " " "

LEGEND

- Location
- ☀ Gas Well
- Oil Well
- ☀ Gas - Distillate Well
- or ○ Dry Hole
- Dry Showing Oil
- ☀ Dry Showing Gas
- ⊗ Abandoned Location
- ☀ or ☀ Abandoned Gas Well
- or ● Abandoned Oil Well
- or ○ Input Well

Low



Scale _____

Remarks: _____

Submitted by CB Civil Engineer Approved by _____ Division Manager
 Approved by _____ Vice-President - General Manager