



Western Michigan University  
ScholarWorks at WMU

---

Legacy Scout Tickets from Pure Oil Company

---

8-20-2021

**MGRRE\_PureOilScoutTickets\_Landheer,  
Martin\_1\_21081128760000**

MGRRE  
*Western Michigan University*

Follow this and additional works at: <https://scholarworks.wmich.edu/pure>



Part of the Geology Commons

---

#### **WMU ScholarWorks Citation**

MGRRE, "MGRRE\_PureOilScoutTickets\_Landheer, Martin\_1\_21081128760000" (2021). *Legacy Scout Tickets from Pure Oil Company*. 4504.  
<https://scholarworks.wmich.edu/pure/4504>

This Document is brought to you for free and open access via ScholarWorks at WMU. It has been accepted for inclusion in Legacy Scout Tickets from Pure Oil Company by an authorized administrator of ScholarWorks at WMU. See the National Digital Catalogue - Science Base Catalogue for more collections submitted by MGRRE.



---

**MGRRE\_PureOilScoutTickets\_Landheer, Martin\_1\_21081128760000**

API 21081128760000

Permit Number 12876

Lease Name Landheer, Martin

Well Number 1

County Kent

Township 10N

Range 12W

Section 27

2021 DEQ or Pure co\_name MacCallum, Byron

Pure Number 632

Latitude 43.23163

Longitude -85.71299

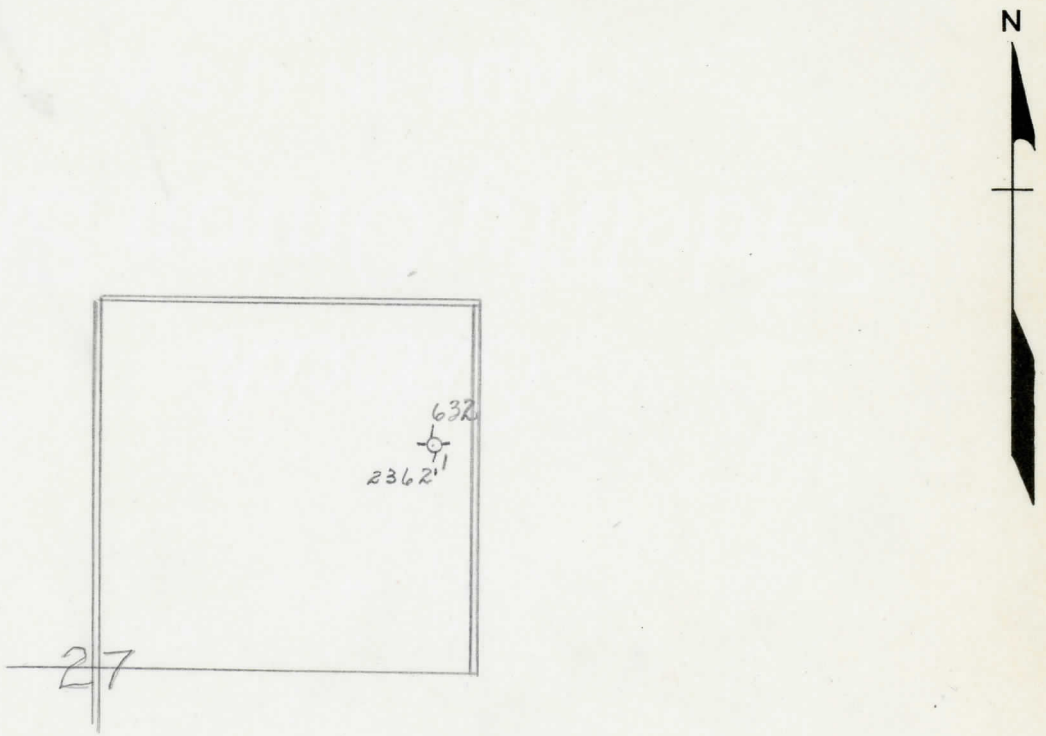
# THE PURE OIL COMPANY LOCATION REPORT

Date December 31, 1946 A.F.E. No. Martin Landheer  
 Division Mich. Producing District \_\_\_\_\_ Lease Martin Landheer  
 Acres \_\_\_\_\_ Lease No. \_\_\_\_\_ Elevation \_\_\_\_\_ Well No. 1 (Serial No. 632)  
 Quadrangle SE NE NE Sec. 27 Twp. 10 N Rge. 12 W BKK Dist. Tyrone Twp. Tyrone  
 Survey \_\_\_\_\_ County Kent State Michigan  
 Operator Byron MacCallum Map Tyrone Township, Kent County

Feet from North Line of Lease	
<u>330</u>	<u>330</u>
" "	East " " "
<u>330</u>	<u>330</u>
" "	South " " "
" "	West " " "
Feet from North Line of Section	
<u>990</u>	<u>990</u>
<u>330</u>	<u>330</u>
" "	East " " "
" "	South " " "
" "	West " " "

**LEGEND**

- Location
- ☀ Gas Well
- Oil Well
- ☀ Gas - Distillate Well
- ∅ or ○ Dry Hole
- Dry Showing Oil
- ☀ Dry Showing Gas
- ⊖ Abandoned Location
- ☀ or ⊖ Abandoned Gas Well
- or ● Abandoned Oil Well
- or ○ Input Well



Remarks: \_\_\_\_\_ Scale \_\_\_\_\_

Submitted by CB Civil Engineer Approved by \_\_\_\_\_ Division Manager  
 Approved by \_\_\_\_\_ Vice-President - General Manager