



Western Michigan University
ScholarWorks at WMU

Legacy Scout Tickets from Pure Oil Company

8-20-2021

**MGRRE_PureOilScoutTickets_Kellogg, W.I., U.S. Gov.
Fee_1_21085088110000**

MGRRE
Western Michigan University

Follow this and additional works at: <https://scholarworks.wmich.edu/pure>



Part of the Geology Commons

WMU ScholarWorks Citation

MGRRE, "MGRRE_PureOilScoutTickets_Kellogg, W.I., U.S. Gov. Fee_1_21085088110000" (2021). *Legacy Scout Tickets from Pure Oil Company*. 4519.
<https://scholarworks.wmich.edu/pure/4519>

This Document is brought to you for free and open access via ScholarWorks at WMU. It has been accepted for inclusion in Legacy Scout Tickets from Pure Oil Company by an authorized administrator of ScholarWorks at WMU. See the National Digital Catalogue - Science Base Catalogue for more collections submitted by MGRRE.



MGRRE_PureOilScoutTickets_Kellogg, W.I., U.S. Gov. Fee_1_21085088110000

API 21085088110000

Permit Number 8811

Lease Name Kellogg, W.I., U.S. Gov. Fee

Well Number 1

County Lake

Township 20N

Range 11W

Section 14

2021 DEQ or Pure co_name Voorhees Drilling Company

Pure Number 20

Latitude 44.1307

Longitude -85.59651

THE PURE OIL COMPANY

LOCATION REPORT

DATE July 30, 1941

No. 20

STATE Michigan COUNTY Lake DIST Dover TWP. Dover SEC. 14 TOWN 20 N RANGE 11 W

WELL No. 1 (SERIAL No. 20) FARM W. L. Kellogg-U.S.A. Fee ACRES

NAME OF STREAM OR WATERS QUADRANGLE C NE NW

OPERATOR Voorhees Drilling Company Map Dover Township, Lake County

Feet from North Line of Farm

5940 5940 " " East " " "

7260 7260 " " South " " "

" " West " " "

Feet from North Line of Section

660 660 1/4

660 660 " " East " " "

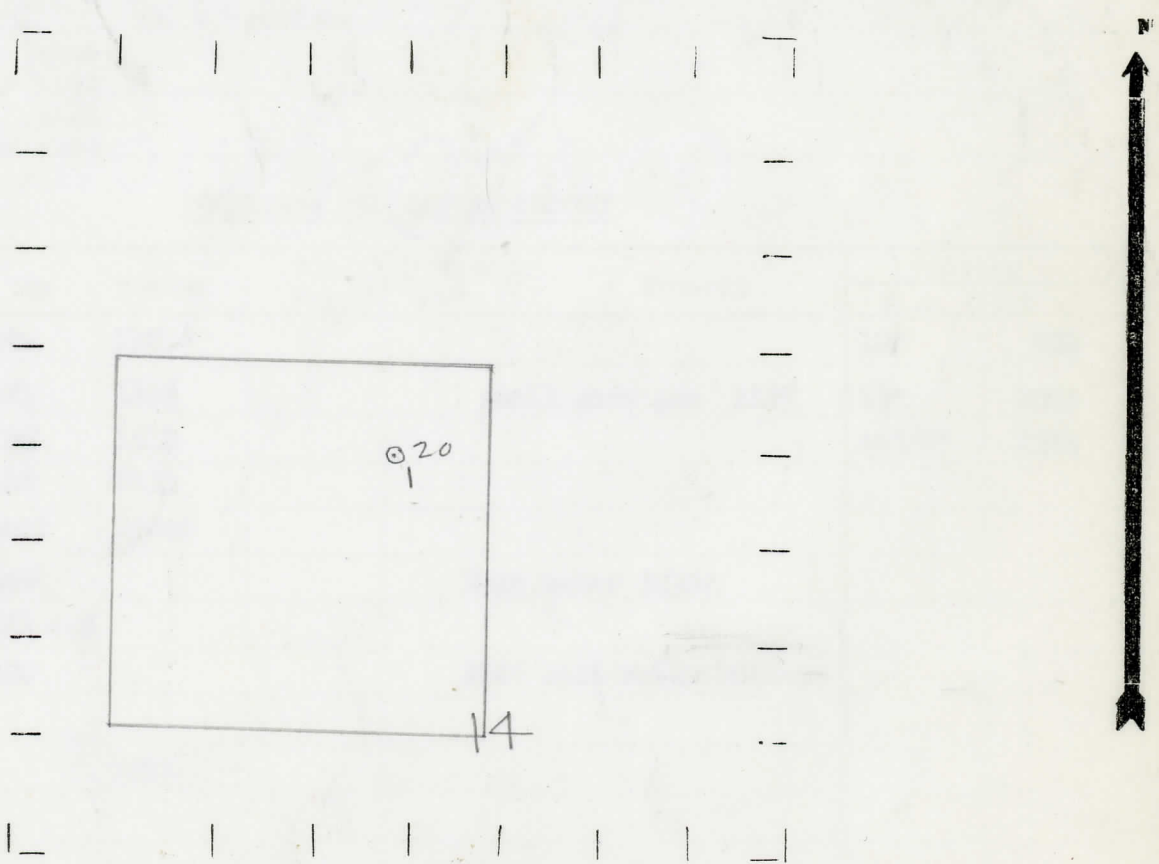
" " South " " "

" " West " " "

LEGEND

- LOCATION
⊕ RIG
⊕ DRILLING
☀ GAS WELL
● OIL WELL
● SMALL OIL WELL
⊖ DRY HOLE
● DRY SHOWING OIL
⊖ DRY SHOWING GAS
⊖ ABANDONED LOCATION
☀ ABANDONED GAS WELL
● ABANDONED OIL WELL

NOTE: Below make tracing from map, (when no map is obtainable make sketch) showing farm, center of section, this location with measurements and also wells, dry holes, or other locations in the vicinity of this location.



REMARKS:

SIGNED

W

Superintendent or Foreman.

Date October 29, 1941 No. 20
 State Mich. County Lake Dist. Dover
 Twp. Dover Sec. 14 Twp. 20N Rge. 11W
 Well No. 1 (Serial No.)
 (County No.) 20 Farm W. L. Kellogg & U.S. Gov. Fee
 Acres
 Operator Voorhees Drilling Co. Information secured from Scouting Dept.
 Date well started 8-2-41 Date well completed 10-26-41 Elevation 1262.3

PRODUCTION RECORD

1st 24 hours natural Dry Hole
 2nd 24 hours natural
 Date of shot No. of quarts From to From to
 Date of acid No. of gallons
 shot
 1st 24 hours after acid
 shot
 2nd 24 hours after acid

FORMATION AND CASING RECORD

Formation	Top	Bottom	Top Pay	Bottom Pay	Remarks	Casing	
						Size	Set at
Brown Dolomite	1094	1121				10"	820
Mich. Stray	1121	1135			small show gas 1127	8 1/4"	1095
Marshall	1190	1510				6-5/8"	1580
Coldwater R.R.	2118	2133					
Antrim	2640?	2950?					
Trav. Lime	3080				Salt water 3230'		
Dundee	3733 SLM						
Monroe	3820				800' salt water 3846-48		
Total Depth		3851					

Remarks 3734 CTM equals 3749 SLM