



Western Michigan University
ScholarWorks at WMU

Legacy Scout Tickets from Pure Oil Company

8-20-2021

MGRRE_PureOilScoutTickets_Pfuhl, Curt_2_21085091100000

MGRRE

Western Michigan University

Follow this and additional works at: <https://scholarworks.wmich.edu/pure>



Part of the Geology Commons

WMU ScholarWorks Citation

MGRRE, "MGRRE_PureOilScoutTickets_Pfuhl, Curt_2_21085091100000" (2021). *Legacy Scout Tickets from Pure Oil Company*. 4527.

<https://scholarworks.wmich.edu/pure/4527>

This Document is brought to you for free and open access via ScholarWorks at WMU. It has been accepted for inclusion in Legacy Scout Tickets from Pure Oil Company by an authorized administrator of ScholarWorks at WMU. See the National Digital Catalogue - Science Base Catalogue for more collections submitted by MGRRE.



MGRRE_PureOilScoutTickets_Pfuhl, Curt_2_21085091100000

API 21085091100000

Permit Number 9110

Lease Name Pfuhl, Curt

Well Number 2

County Lake

Township 18N

Range 11W

Section 24

2021 DEQ or Pure co_name Summit Petroleum Corporation

Pure Number 32

Latitude 43.9334636

Longitude -85.5649644

THE PURE OIL COMPANY

DATE October 29, 1941

LOCATION REPORT

No. 32

32

STATE Michigan COUNTY Lake DIST. Pinora TWP. Pinora SEC. 24 TOWN 18N RANGE 11W
WELL No. 2 (SERIAL No. 32) FARM Curt Pfuhl ACRES

NAME OF STREAM OR WATERS _____ QUADRANGLE C N 3E SE

OPERATOR The Ohio Oil Co. Map Pinora Township, Lake County

330 330 Feet from North Line of Farm

" " East " " "

" " South " " "

660 660 Feet from North Line of Section

" " East " " "

660 660 " " East " " 1/4

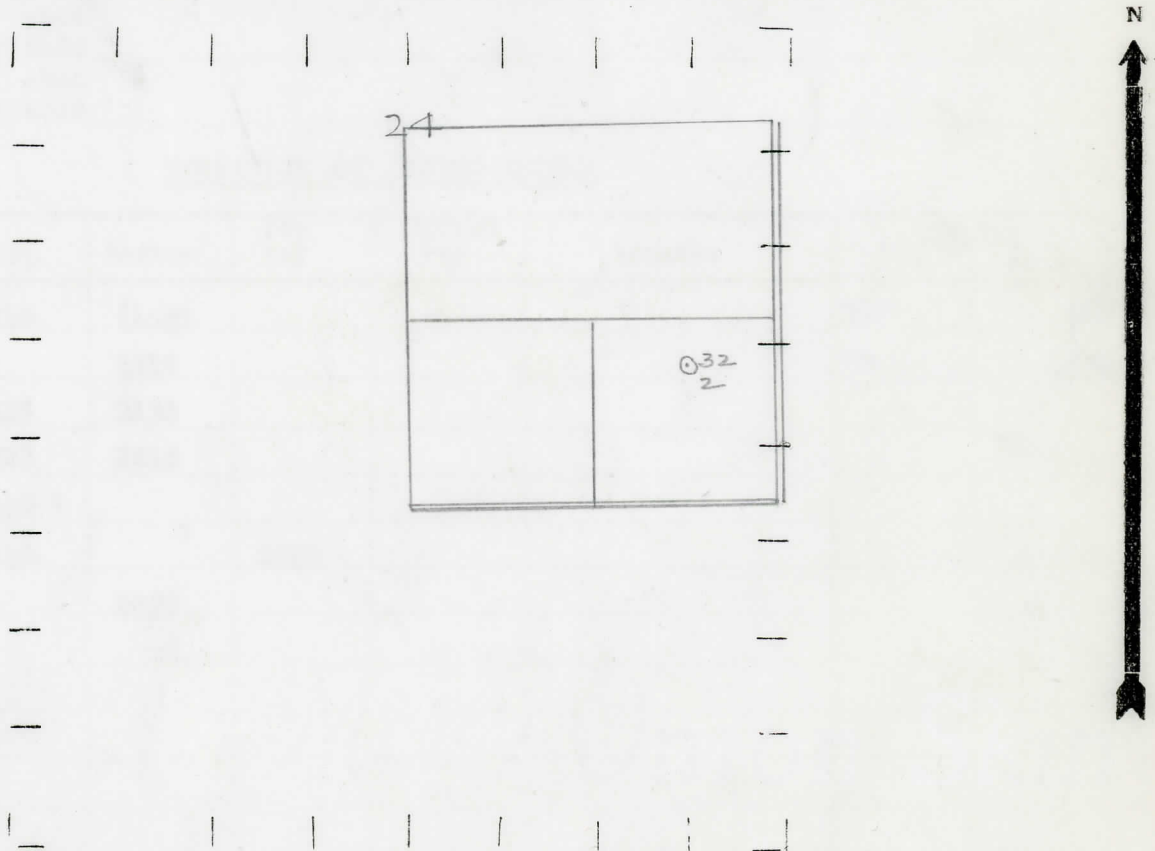
990 990 " " South " " "

" " West " " "

LEGEND

- LOCATION
- ⊕ RIG
- ⊕ DRILLING
- ☀ GAS WELL
- OIL WELL
- SMALL OIL WELL
- ⊙ DRY HOLE
- DRY SHOWING OIL
- ☀ DRY SHOWING GAS
- ⊙ ABANDONED LOCATION
- ☀ ABANDONED GAS WELL
- ABANDONED OIL WELL

NOTE: Below make tracing from map. (when no map is obtainable make sketch) showing farm, center of section, this location with measurements and also wells, dry holes, or other locations in the vicinity of this location.



REMARKS:

SIGNED

Subintendent or Foreman.

(Handwritten signature)

330 330
 OBSERVATION THE OHIO OIL CO.
 DATE OCTOBER 1941
 NAME OF SURVEYOR OR MALEES BLVDVINGTE C. H. 2E 2E
 WELL NO. 5 (SERIAL NO. 32) EVBN
 TOWN 18 N RANGE 11 W VCHES

Date January 14, 1942 No. 32
 State Mich. County Lake ~~Dist.~~ Twp. Pinora Sec. 24 Twp. 18 N Rge. 11 W
 Well No. 2 (Serial No.) 32 Farm Curt Pfuhl Acres _____
 Operator Ohio Oil Company Information secured ~~from~~ By Scouting Department
 Date well started 12-5-41 Date well completed 1-1-42 Elevation 1152.8

PRODUCTION RECORD

1st 24 hours natural Est. 2400 Barrels
 2nd 24 hours natural _____
 Date of shot _____ No. of quarts _____ From _____ to _____ From _____ to _____
 Date of acid _____ No. of gallons _____
 1st 24 hours after acid shot _____
 2nd 24 hours after acid shot _____

FORMATION AND CASING RECORD

Formation	Top	Bottom	Top Pay	Bottom Pay	Remarks	Casing	
						Size	Set at
Stray	1240	(Log)				10"	408
Marshall		1515				7"	1552
Coldw. Red Rock	2115	2130					
Berea	2225	2245					
Antrim	2602 ?						
Traverse Line	2940		2950				
Total Depth		2950					

Remarks 1555' CTM equals 1552' SIM.

Signed D. C. Shackelford