



---

Legacy Scout Tickets from Pure Oil Company

---

8-20-2021

**MGRRE\_PureOilScoutTickets\_Allen, Marion  
H.\_1\_21085098990000**

MGRRE  
*Western Michigan University*

Follow this and additional works at: <https://scholarworks.wmich.edu/pure>



Part of the Geology Commons

---

#### **WMU ScholarWorks Citation**

MGRRE, "MGRRE\_PureOilScoutTickets\_Allen, Marion H.\_1\_21085098990000" (2021). *Legacy Scout Tickets from Pure Oil Company*. 4558.  
<https://scholarworks.wmich.edu/pure/4558>

This Document is brought to you for free and open access via ScholarWorks at WMU. It has been accepted for inclusion in Legacy Scout Tickets from Pure Oil Company by an authorized administrator of ScholarWorks at WMU. See the National Digital Catalogue - Science Base Catalogue for more collections submitted by MGRRE.



---

**MGRRE\_PureOilScoutTickets\_Allen, Marion H.\_1\_21085098990000**

API 21085098990000

Permit Number 9899

Lease Name Allen, Marion H.

Well Number 1

County Lake

Township 20N

Range 13W

Section 34

2021 DEQ or Pure co\_name Teater, C, W.

Pure Number 63

Latitude 44.0801

Longitude -85.84475

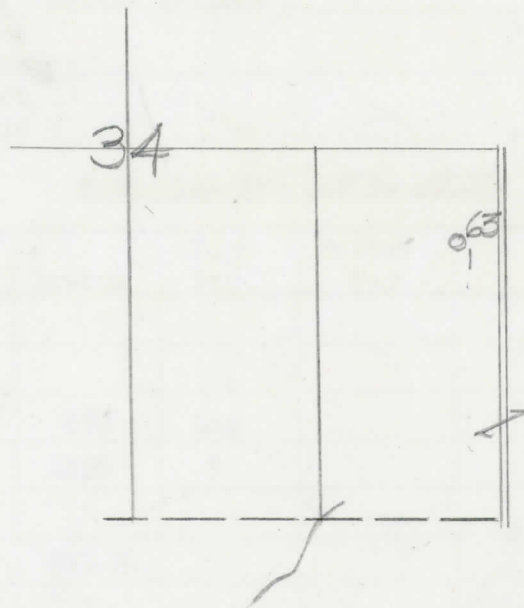
# THE PURE OIL COMPANY LOCATION REPORT

Date December 2, 1942 A.F.E. No. \_\_\_\_\_  
 Division Mich. Producing District \_\_\_\_\_ Lease Marion H. Allen  
 Acres \_\_\_\_\_ Lease No. \_\_\_\_\_ Elevation \_\_\_\_\_ Well No. 1 (Serial No. 63)  
 Quadrangle C E 1/2 NE SE Sec. 34 Twp. 20 N Rge. 13 W Dist. Eden  
 Survey \_\_\_\_\_ County Lake State Michigan  
 Operator Charles W. Teater Map Eden Twp - Lake Co.

<u>660'</u>	<u>660</u>	Feet from North Line of Lease
<u>330'</u>	<u>330</u>	" " East " " "
		" " South " " "
		" " West " " "
<u>660'</u>	<u>660</u>	Feet from North Line of Section
<u>330'</u>	<u>330</u>	" " East " " <u>1/4</u>
		" " South " " "
		" " West " " "

### LEGEND

- Location
- ☀ Gas Well
- Oil Well
- ☀ Gas - Distillate Well
- ∅ or ○ Dry Hole
- Dry Showing Oil
- ☀ Dry Showing Gas
- ⊙ Abandoned Location
- ☀ or ☀ Abandoned Gas Well
- or ● Abandoned Oil Well
- or ○ Input Well



Scale \_\_\_\_\_

Remarks: \_\_\_\_\_  
 \_\_\_\_\_  
 \_\_\_\_\_

Submitted by N \_\_\_\_\_ Civil Engineer  
 Approved by \_\_\_\_\_ Division Manager  
 Approved by \_\_\_\_\_ Vice-President - General Manager

THE PURE OIL COMPANY  
The Pure Oil Company

COMPLETION RECORD OF WELLS DRILLED BY OTHER OPERATORS

Michigan Producing Division

Date February 10, 1943 No. 63  
 State Mich. County Lake District Eden Twp. Eden Sec. 34 Twp. 20 N Rge. 13 W  
 Well No. 1 (Serial No.) 63 Farm Marion H. Allen Acres \_\_\_\_\_  
 Operator Charles W. Teater Information secured ~~from~~ Scouting Department By \_\_\_\_\_  
 Date well started 12-26-42 Date well completed 2-8-43 Elevation 925.6

PRODUCTION RECORD

1st 24 hours natural Dry Hole  
 2nd 24 hours natural \_\_\_\_\_  
 Date of shot \_\_\_\_\_ No. of quarts \_\_\_\_\_ From \_\_\_\_\_ to \_\_\_\_\_ From \_\_\_\_\_ to \_\_\_\_\_  
 Date of acid \_\_\_\_\_ No. of gallons \_\_\_\_\_  
 1st 24 hours after acid shot \_\_\_\_\_  
 2nd 24 hours after acid shot \_\_\_\_\_

FORMATION AND CASING RECORD

Formation	Top	Bottom	Top Pay	Bottom Pay	Remarks	Casing	
						Size	Set at
Brown Dolomite	548					10"	422
Stray	647					8-1/4"	443
Marshall		893	Log			6-5/8"	939
Coldw. Red Rock	1436	1450	"			5-3/16"	2999
Antrim	2086						
Traverse Form.	2346	S.L.M.					
Traverse Lime	2408	"			H.F.S.W. 2440-2444.		
Dundee	2997				Rainbow oil 3085-		
					3094. Odor oil 3150.		
					Water 3192-3195 -		
					1000 ft. in 1 hr.		
Total Depth		3195					

Remarks 2367' CTM equals 2360' SLM; 2982' CTM equals 2982' SLM.

Signed D. C. Shackelford