



Western Michigan University
ScholarWorks at WMU

Legacy Scout Tickets from Pure Oil Company

8-20-2021

**MGRRE_PureOilScoutTickets_Coveny, Edward
J._1_21085099210000**

MGRRE
Western Michigan University

Follow this and additional works at: <https://scholarworks.wmich.edu/pure>



Part of the Geology Commons

WMU ScholarWorks Citation

MGRRE, "MGRRE_PureOilScoutTickets_Coveny, Edward J._1_21085099210000" (2021). *Legacy Scout Tickets from Pure Oil Company*. 4560.
<https://scholarworks.wmich.edu/pure/4560>

This Document is brought to you for free and open access via ScholarWorks at WMU. It has been accepted for inclusion in Legacy Scout Tickets from Pure Oil Company by an authorized administrator of ScholarWorks at WMU. See the National Digital Catalogue - Science Base Catalogue for more collections submitted by MGRRE.



MGRRE_PureOilScoutTickets_Coveny, Edward J._1_21085099210000

API 21085099210000

Permit Number 9921

Lease Name Coveny, Edward J.

Well Number 1

County Lake

Township 19N

Range 11W

Section 31

2021 DEQ or Pure co_name Bolger Oil Company and Gordon Oil Company

Pure Number 65

Latitude 43.99448

Longitude -85.66485

THE PURE OIL COMPANY LOCATION REPORT

Date 12-23-42 A.F.E. No. _____

Division Michigan Producing District _____ Lease Edward J. Coveny
Edward J. Coveny

Acres _____ Lease No. _____ Elevation _____ Well No. 1 (Serial No. 65*)

Quadrangle C N 1/2 NE SE Sec. 31 Twp. 19 N Rge. 11 W ~~Dist. Ellsworth~~ Ellsworth

Survey _____ County Lake State Michigan

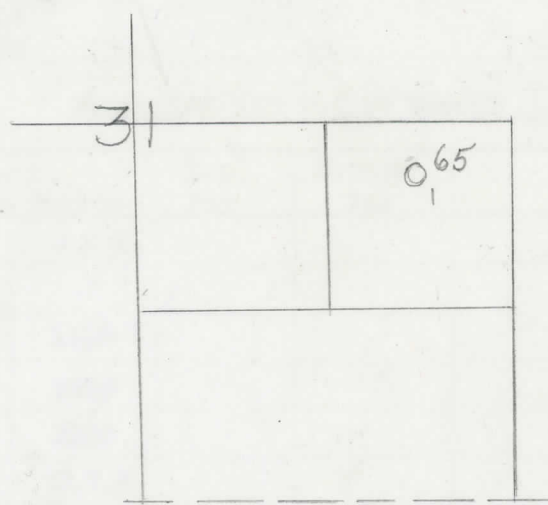
Operator Bolger Oil Co. & Gordon Oil Co. Map Ellsworth Twp - Lake Co.
Ellsworth Township, Lake County

<u>330</u>	<u>330</u>	Feet from North Line of Lease
<u>660</u>	<u>660</u>	" " East " " "
		" " South " " "
<u>660</u>	<u>660</u>	" " West " " "
<u>330</u>	<u>330</u>	Feet from North Line of Section <u>1/4</u>
<u>660</u>	<u>660</u>	" " East " " "
		" " South " " "
		" " West " " "

misology

LEGEND

- Location
- ☀ Gas Well
- Oil Well
- ☀ Gas - Distillate Well
- ∅ or ○ Dry Hole
- Dry Showing Oil
- ☀ Dry Showing Gas
- ⊙ Abandoned Location
- ☀ or ☀ Abandoned Gas Well
- or ● Abandoned Oil Well
- or ○ Input Well



Scale _____

Remarks: _____

Submitted by N _____ Approved by _____
Civil Engineer Division Manager

Approved by _____
Vice-President - General Manager

The Pure Oil Company COMPLETION RECORD OF WELLS DRILLED BY OTHER OPERATORS

Michigan Producing Division

Date June 2, 1943 No. 65 State Mich. County Lake DISTRICT Ellsworth Sec. 31 Twp. 19 N Rge. 11 W Well No. 1 (Serial No.) (County No.) 65 Farm Edw. J. Coveny Acres Operator Bolger Oil Co. & Gordon Oil Co. Information secured from Scouting Department Date well started 12-29-42 Date well completed 5-27-43 Elevation 1156.8

PRODUCTION RECORD

1st 24 hours natural Dry Hole 2nd 24 hours natural Date of shot No. of quarts From to From to Date of acid No. of gallons shot 1st 24 hours after acid shot 2nd 24 hours after acid shot

FORMATION AND CASING RECORD

Table with columns: Formation, Top, Bottom, Top Pay, Bottom Pay, Remarks, Casing Size, Casing Set at. Rows include Brown Dolomite, Stray, Marshall, Coldw. Red Rock, Sunbury, Antrim, Traverse Lime, Dundee Lime, Monroe Dol. or Detroit River, and Total Depth.

Remarks 1286' DSM equals 1286' SLM; 2713' CTM equals 2710' SLM; 3508' CTM equals 3515' SLM; 3706' CTM equals 3710' SOM.

Signed D. C. Shackelford