



Western Michigan University
ScholarWorks at WMU

Legacy Scout Tickets from Pure Oil Company

8-20-2021

MGRRE_PureOilScoutTickets_Castlebar_2_21085104360000

MGRRE

Western Michigan University

Follow this and additional works at: <https://scholarworks.wmich.edu/pure>



Part of the Geology Commons

WMU ScholarWorks Citation

MGRRE, "MGRRE_PureOilScoutTickets_Castlebar_2_21085104360000" (2021). *Legacy Scout Tickets from Pure Oil Company*. 4566.

<https://scholarworks.wmich.edu/pure/4566>

This Document is brought to you for free and open access via ScholarWorks at WMU. It has been accepted for inclusion in Legacy Scout Tickets from Pure Oil Company by an authorized administrator of ScholarWorks at WMU. See the National Digital Catalogue - Science Base Catalogue for more collections submitted by MGRRE.



MGRRE_PureOilScoutTickets_Castlebar_2_21085104360000

API 21085104360000

Permit Number 10436

Lease Name Castlebar

Well Number 2

County Lake

Township 17N

Range 11W

Section 29

2021 DEQ or Pure co_name Freeman Oil Company

Pure Number 76

Latitude 43.83934

Longitude -85.66093

THE PURE OIL COMPANY LOCATION REPORT

Date October 20, 1943 A.F.E. No. _____

Division Mich. Producing District _____ Lease Castlebar

Acres _____ Lease No. _____ Elevation _____ Well No. 2 (Serial No. 76)

Quadrangle CNW-SW-NW Sec. 29 Twp. 17N Rge. 11W Twp. Chase

Survey _____ County Lake State Michigan

Operator Freeman Oil Co. Map Chase Township, Lake County

386.6 386.6 Feet from North Line of Lease

“ “ East “ “ “

“ “ South “ “ “

386.6 386.6 “ “ West “ “ “

Feet from North Line of Section

“ “ East “ “ “

933.4 933.4 “ “ South “ 1/4 “

386.6 386.6 “ “ West “ “ “

LEGEND

○ Location

☀ Gas Well

☀ Dry Showing Gas

● Oil Well

⊗ Abandoned Location

☀ Gas - Distillate Well

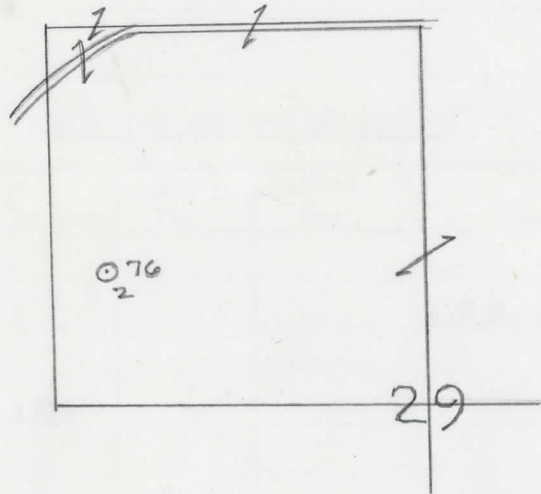
☀ or ⊗ Abandoned Gas Well

○ or ⊗ Dry Hole

● or ● Abandoned Oil Well

● Dry Showing Oil

⊗ or ⊗ Input Well



Scale _____

Remarks: _____

Submitted by RN Civil Engineer

Approved by _____ Division Manager

Approved by _____ Vice-President - General Manager

COMPLETION RECORD OF WELLS DRILLED BY OTHER OPERATORS

Michigan Producing Division

Date December 29, 1943 No. 76
 State Mich. County Lake Twp. Chase Sec. 29 Twp. 17 N Rge. 11 W
 (Serial No.)
 Well No. 2 (County No.) 76 Farm Castlebar Acres _____
 Operator Freeman Oil Company Information secured from Scouting Department
 Date well started 10-23-43 Date well completed 12-22-43 Elevation 1108.3

PRODUCTION BOARD

1st 24 hours natural Dry Hole
 2nd 24 hours natural _____
 Date of shot _____ No. of quarts _____ From _____ to _____ From _____ to _____
 Date of acid _____ No. of gallons _____
 1st 24 hours after acid shot _____
 2nd 24 hours after acid shot _____

FORMATION AND CASING RECORD

Formation	Top	Bottom	Top Pay	Bottom Pay	Remarks	Casing	
						Size	Set at
Brown Dolomite	1223					10"	645
Mich. Stray	1324				H.F.W. 1324.	8-1/4"	1010
Marshall	1427					6-5/8"	1601
Red Rock		1570				5-3/16"	2300
Sunbury	2198						
Berea	2467				Vary small show oil 2467 to 2471.		
Total Depth		2516					

Remarks 2387' equals 2387' SLM.

Signed D. C. Shackelford