



Western Michigan University  
ScholarWorks at WMU

---

Legacy Scout Tickets from Pure Oil Company

---

8-20-2021

**MGRRE\_PureOilScoutTickets\_Samuels, Alta\_1\_21085113690000**

MGRRE

*Western Michigan University*

Follow this and additional works at: <https://scholarworks.wmich.edu/pure>



Part of the Geology Commons

---

#### **WMU ScholarWorks Citation**

MGRRE, "MGRRE\_PureOilScoutTickets\_Samuels, Alta\_1\_21085113690000" (2021). *Legacy Scout Tickets from Pure Oil Company*. 4575.

<https://scholarworks.wmich.edu/pure/4575>

This Document is brought to you for free and open access via ScholarWorks at WMU. It has been accepted for inclusion in Legacy Scout Tickets from Pure Oil Company by an authorized administrator of ScholarWorks at WMU. See the National Digital Catalogue - Science Base Catalogue for more collections submitted by MGRRE.



---

**MGRRE\_PureOilScoutTickets\_Samuels, Alta\_1\_21085113690000**

API 21085113690000

Permit Number 11369

Lease Name Samuels, Alta

Well Number 1

County Lake

Township 17N

Range 11W

Section 24

2021 DEQ or Pure co\_name Rex Oil and Gas Company

Pure Number 85

Latitude 43.85417

Longitude -85.56867

THE PURE OIL COMPANY  
LOCATION REPORT

Date February 21, 1945 A.F.E. No. \_\_\_\_\_

Division Mich. Producing District \_\_\_\_\_ Lease Alta Samuels

Acres \_\_\_\_\_ Lease No. \_\_\_\_\_ Elevation \_\_\_\_\_ Well No. 1 (Serial No. 85)

Quadrangle NE-SW-NE Sec. 24 Twp. 17 N Rge. 11 W ~~EDC~~ ~~Dist~~ Chase

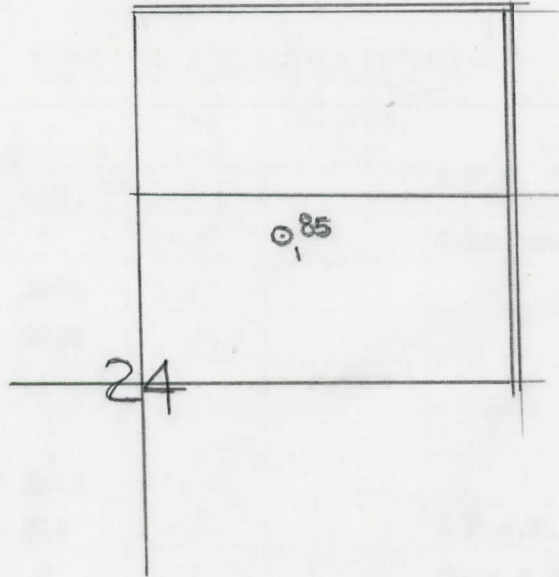
Survey \_\_\_\_\_ County Lake State Michigan

Operator Rex Oil & Gas Company Map Chase Township, Lake County

<u>330</u>	<u>330</u>	Feet from North Line of Lease
_____	_____	" " East " " "
_____	_____	" " South " " "
<u>990</u>	<u>990</u>	" " West " " "
_____	_____	Feet from North Line of Section
_____	_____	" " East " " "
<u>990</u>	<u>990</u>	" " South " <u>1/4</u> "
<u>990</u>	<u>990</u>	" " West " " "

LEGEND

- Location
- ☀ Gas Well
- Oil Well
- ☀- Gas - Distillate Well
- or ○ Dry Hole
- or ● Dry Showing Oil
- ☀- Dry Showing Gas
- ⊗ Abandoned Location
- ☀ or ☀ Abandoned Gas Well
- or ● Abandoned Oil Well
- or ○ Input Well



Scale \_\_\_\_\_

Remarks: \_\_\_\_\_  
\_\_\_\_\_  
\_\_\_\_\_

Submitted by RH \_\_\_\_\_ Approved by \_\_\_\_\_  
Civil Engineer \_\_\_\_\_ Division Manager \_\_\_\_\_

Approved by \_\_\_\_\_  
Vice-President - General Manager \_\_\_\_\_

COMPLETION RECORD OF WELLS DRILLED BY OTHER OPERATORS

Michigan Producing Division

Date May 16, 1945 No. 85
State Mich. County Lake Twp. Chase Sec. 24 Twp. 17 N Rge. 11 W
Well No. 1 (County No.) 85 Farm Alta Samuels Acres
Operator Rex Oil & Gas Co. Information secured By Scouting Department
Date well started 2-28-45 Date well completed 5-11-45 Elevation 1173.8

PRODUCTION BOARD

1st 24 hours natural Dry Hole
2nd 24 hours natural
Date of shot No. of quarts From To From to
Date of acid No. of gallons
1st 24 hours after acid shot
2nd 24 hours after acid shot

FORMATION AND CASING RECORD

Table with columns: Formation, Top, Bottom, Top Pay, Bottom Pay, Remarks, Casing Size, Casing Set at. Rows include Brown Dolomite, Mich. Stray, Marshall, Coldw. Red Rock, Sunbury, Berea, Antrim, Traverse Lime, Dundee, Detroit River, Total Depth.

Remarks 1338' equals 1343' SLM; 3062' eq. 3069' SLM; 3629' eq. 3618' SLM.

Signed D. C. Shackelford