



Western Michigan University  
ScholarWorks at WMU

---

Legacy Scout Tickets from Pure Oil Company

---

8-20-2021

**MGRRE\_PureOilScoutTickets\_Ichenberg,  
Frank\_1\_21085124690000**

MGRRE  
*Western Michigan University*

Follow this and additional works at: <https://scholarworks.wmich.edu/pure>



Part of the Geology Commons

---

#### WMU ScholarWorks Citation

MGRRE, "MGRRE\_PureOilScoutTickets\_Ichenberg, Frank\_1\_21085124690000" (2021). *Legacy Scout Tickets from Pure Oil Company*. 4579.  
<https://scholarworks.wmich.edu/pure/4579>

This Document is brought to you for free and open access via ScholarWorks at WMU. It has been accepted for inclusion in Legacy Scout Tickets from Pure Oil Company by an authorized administrator of ScholarWorks at WMU. See the National Digital Catalogue - Science Base Catalogue for more collections submitted by MGRRE.



---

**MGRRE\_PureOilScoutTickets\_Ichenberg, Frank\_1\_21085124690000**

API 21085124690000

Permit Number 12469

Lease Name Ichenberg, Frank

Well Number 1

County Lake

Township 17N

Range 11W

Section 28

2021 DEQ or Pure co\_name Panhandle Eastern Pipeline Company

Pure Number 89

Latitude 43.83388

Longitude -85.62712

THE PURE OIL COMPANY  
LOCATION REPORT

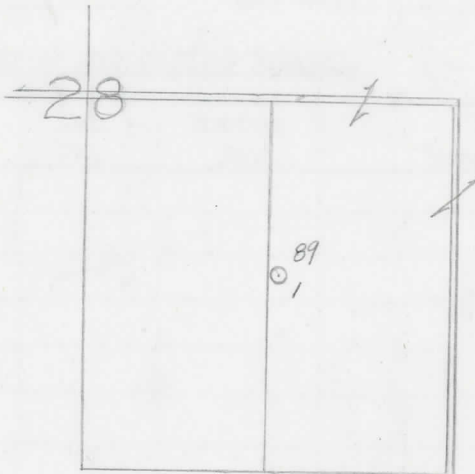
Date July 24, 1946 A.F.E. No. Frank Ichenberg  
 Division Mich. Producing District \_\_\_\_\_ Lease Frank Ichenberg  
 Acres \_\_\_\_\_ Lease No. \_\_\_\_\_ Elevation \_\_\_\_\_ Well No. 1 (Serial No. 89)  
 Quadrangle SW-NE-SE Sec. 28 Twp. 17 N Rge. 11 W Twp. Chase  
 Survey \_\_\_\_\_ County Lake State Michigan  
 Operator Panhandle Eastern Pipe Line Co. Map Chase Township, Lake County

<u>1220</u>	<u>1220</u>	Feet from North Line of Lease
<u>1220</u>	<u>1220</u>	" " East " " "
		" " South " " "
		" " West " " "
<u>1220</u>	<u>1220</u>	Feet from North Line of Section
<u>1220</u>	<u>1220</u>	" " East " " "
		" " South " " "
		" " West " " "

LEGEND

- Location
- ☀ Gas Well
- Oil Well
- ☀ Gas - Distillate Well
- ⊘ or ○ Dry Hole
- Dry Showing Oil
- ☀ Dry Showing Gas
- ⊘ Abandoned Location
- ☀ or ☀ Abandoned Gas Well
- or ● Abandoned Oil Well
- or ○ Input Well

*See p. 4*



Remarks: \_\_\_\_\_  
 \_\_\_\_\_  
 \_\_\_\_\_

Scale \_\_\_\_\_

Submitted by CB Civil Engineer Approved by \_\_\_\_\_ Division Manager  
 Approved by \_\_\_\_\_ Vice-President - General Manager

THE PURE OIL COMPANY

THE PURE OIL COMPANY

COMPLETION RECORD OF WELLS DRILLED BY OTHER OPERATORS

Michigan Producing Division

Date July 24, 1946 No. 89  
 State Mich. Co. Lake ~~Edsel~~ Twp. Chase Sec. 28 Twp. 17 N Rge. 11 W  
 Well No. 1 Serial No. 89 Farm Frank Ichenberg Acres  
 Operator Panhandle Eastern Pipe Line Company  
 Date started 7-17-46 Date completed 7-22-46 Elevation 1182.5

PRODUCTION RECORD

1st 24 hours natural  
 Date of shot No. of quarts From To From To  
 Date of acid No. of gallons shot  
 1st 24 hours after acid  
 Completed as: Oil Well Gas Well Dry Hole X

FORMATION AND CASING RECORD

Formation	Top	Bottom	Top Pay	Bottom Pay	Remarks	Casing	
						Size	Set at
Brown Dolomite	1303	(-120)				8-5/8"	403
Mich. Stray	1403	(-220)					
Total Depth		1408	(-225)				

Remarks 1408' equals 1408' S.L.M.

Signed D. C. Shackelford