



Western Michigan University
ScholarWorks at WMU

Legacy Scout Tickets from Pure Oil Company

8-20-2021

**MGRRE_PureOilScoutTickets_Sanford,
Stanley_1_21085126850000**

MGRRE
Western Michigan University

Follow this and additional works at: <https://scholarworks.wmich.edu/pure>



Part of the Geology Commons

WMU ScholarWorks Citation

MGRRE, "MGRRE_PureOilScoutTickets_Sanford, Stanley_1_21085126850000" (2021). *Legacy Scout Tickets from Pure Oil Company*. 4582.
<https://scholarworks.wmich.edu/pure/4582>

This Document is brought to you for free and open access via ScholarWorks at WMU. It has been accepted for inclusion in Legacy Scout Tickets from Pure Oil Company by an authorized administrator of ScholarWorks at WMU. See the National Digital Catalogue - Science Base Catalogue for more collections submitted by MGRRE.



MGRRE_PureOilScoutTickets_Sanford, Stanley_1_21085126850000

API 21085126850000

Permit Number 12685

Lease Name Sanford, Stanley

Well Number 1

County Lake

Township 17N

Range 11W

Section 19

2021 DEQ or Pure co_name Austin, B F. and Company, Incorporated

Pure Number 92

Latitude 43.84542

Longitude -85.66359

Wildcat

THE PURE OIL COMPANY LOCATION REPORT

Date October 16, 1946

A.F.E. No. _____

Stanley Sanford

Division Mich. Producing District _____

Lease Stanley Sanford

Acres _____ Lease No. _____ Elevation _____ Well No. 1 (Serial No. 92)

Quadrangle SE-SE-SE Sec. 19 Twp. 17 N Rge. 11 W Twp. Chase

Survey _____ County Lake State Michigan

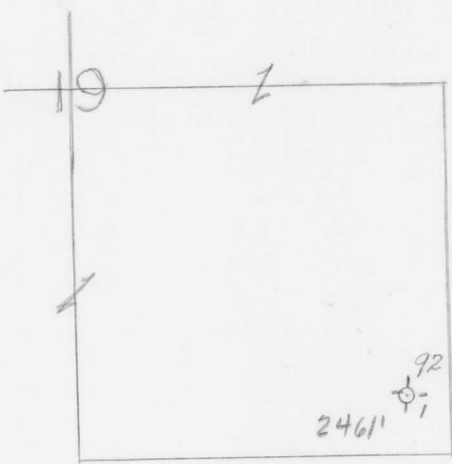
Operator B. F. Austin & Co., Inc. Map Chase Township, Lake County

Feet from North Line of Lease	
<u>330</u>	<u>330</u>
" "	East " " "
<u>405</u>	<u>405</u>
" "	South " " "
" "	West " " "
Feet from North Line of Section	
<u>330</u>	<u>330</u>
" "	East " " <u>1/4</u> "
<u>405</u>	<u>405</u>
" "	South " " "
" "	West " " "

LEGEND

- Location
- ☀ Gas Well
- Oil Well
- ☀ Gas - Distillate Well
- ∅ or ○ Dry Hole
- Dry Showing Oil
- ☀ Dry Showing Gas
- ⊖ Abandoned Location
- ☀ or ☀ Abandoned Gas Well
- or ● Abandoned Oil Well
- or ○ Input Well

Low



Scale _____

Remarks: _____

Submitted by CB Civil Engineer Approved by _____ Division Manager

Approved by _____ Vice-President - General Manager