



---

Legacy Scout Tickets from Pure Oil Company

---

8-20-2021

## MGRRE\_PureOilScoutTickets\_Wilson, Charles A\_1\_21085128530000

MGRRE

*Western Michigan University*

Follow this and additional works at: <https://scholarworks.wmich.edu/pure>



Part of the Geology Commons

---

### WMU ScholarWorks Citation

MGRRE, "MGRRE\_PureOilScoutTickets\_Wilson, Charles A\_1\_21085128530000" (2021). *Legacy Scout Tickets from Pure Oil Company*. 4585.

<https://scholarworks.wmich.edu/pure/4585>

This Document is brought to you for free and open access via ScholarWorks at WMU. It has been accepted for inclusion in Legacy Scout Tickets from Pure Oil Company by an authorized administrator of ScholarWorks at WMU. See the National Digital Catalogue - Science Base Catalogue for more collections submitted by MGRRE.



---

**MGRRE\_PureOilScoutTickets\_Wilson, Charles A\_1\_21085128530000**

API 21085128530000

Permit Number 12853

Lease Name Wilson, Charles A

Well Number 1

County Lake

Township 19N

Range 11W

Section 20

2021 DEQ or Pure co\_name Sohio Petroleum Company

Pure Number 95

Latitude 44.02684

Longitude -85.64884

# THE PURE OIL COMPANY LOCATION REPORT

Date Dec. 18, 1946 A.F.E. No. \_\_\_\_\_  
 Division Mich. Producing District \_\_\_\_\_ Lease Charles A. Wilson  
 Acres \_\_\_\_\_ Lease No. \_\_\_\_\_ Elevation \_\_\_\_\_ Well No. 1 (Serial No. 95)  
 Quadrangle NE SW NE Sec. 20 Twp. 19 N Rge. 11 W ~~ENK~~ ~~ENK~~ Ellsworth  
 Survey \_\_\_\_\_ County Lake State Michigan

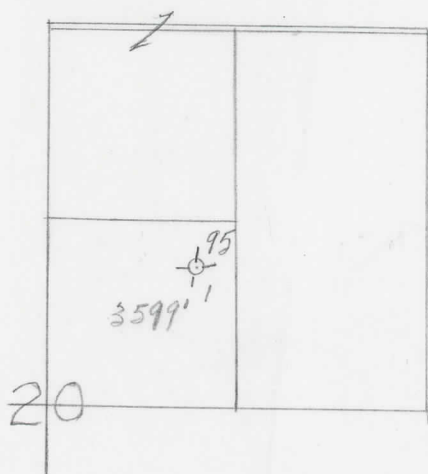
Operator Sohio Petroleum Co. Map Ellsworth Township, Lake County

<u>330</u>	<u>330</u>	Feet from North Line of Lease
<u>330</u>	<u>330</u>	" " East " " "
		" " South " " "
		" " West " " "
		Feet from North Line of Section
<u>970</u>	<u>970</u>	" " East " " "
<u>990</u>	<u>990</u>	" " South " <u>1/4</u> "
		" " West " " "

**LEGEND**

- ☀ Gas Well
- Oil Well
- ☀ Gas - Distillate Well
- or ○ Dry Hole
- Dry Showing Oil
- Location
- ☀ Dry Showing Gas
- ⊗ Abandoned Location
- ☀ or ☀ Abandoned Gas Well
- or ● Abandoned Oil Well
- or ○ Input Well

*Review*



Scale \_\_\_\_\_

Remarks: \_\_\_\_\_  
 \_\_\_\_\_  
 \_\_\_\_\_

Submitted by EB Civil Engineer Approved by \_\_\_\_\_ Division Manager  
 Approved by \_\_\_\_\_ Vice-President - General Manager